

EDITION / VERSİYON
UPDATE / GÜNCELLEME

01/2019
03/2023

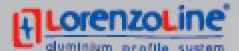


24Z

GLASS PARTITION SYSTEM CAM BÖLME SİSTEMİ



KURTOĞLU®
ALUMINIUM





COMPANY INFORMATION

FİRMAMIZ HAKKINDA

Our company started its operations with copper and lead casting in the 1960s, and in 1980, we started to serve in the Aluminium Sector with aluminium extrusion press that has 1200 ton capacity. KURTOĞLU Aluminium is located in Corlu, approximately 100 km away from Istanbul and operates in 31.000 m2 indoor area. With our latest investments, our company has become a modern integrated facility.

- Annual production capacity ~ 34.000 tons,
- Approximately ~ 500 qualified employees,
- ISO 9001:2015 Quality System.
- Qualicoat Seaside Certificate,
- Qualanod Certificate,
- CE Certificate

The main production features of our Company are described as follows:

- Molding Room (Wire Erosion, Treatment Center),
- Aluminium Extrusion Presses, (800 tons, 1460 tons, 1880 tons, 1460/1880 tons, 2100 tons and 2600 tons),
- Anodic Oxidation Facility (75.000 amps - 412.500 m2 / month)
- Electrostatic Powder Paint Facility (750.000 m2 / month)
- Mechanical Processing Section (CNC Treatment Center)

Kurtoğlu Alüminyum exports its products to; U.S. America, New York, Los Angeles, San Francisco, Switzerland, Germany, Austria, Belgium, Sweden, Albania, England, Greece, Bulgaria, Cyprus, Serbia, Montenegro, Hungary, Georgia, Croatia, Turkmenistan, Kyrgyzstan, Azerbaijan, Moldova, Ukraine, Macedonia, Kosovo, Romania, Belarus, Czech Republic, Libya, Iraq, Algeria, Tunisia, Qatar, Nigeria, Israel, Ghana, Gabon, France, India, Saudi Arabia, Burkina Faso, Ethiopia, Egypt, Ivory Coast, Morocco, Poland, The Netherlands, Russia, Madagascar, Niger, Tanzania, Mozambique, Norway, Lebanon, Mayotte, Palestine, Senegal, Somali, Benin, Canada, Panama.

KURTOĞLU ALUMINIUM continues to operate based on the principle of providing services to its customers with zero fault.

Şirketimiz 1960' lı yıllarda Bakır ve Kurşun ile üretim hayatına başlamıştır. 1980 yılında 1200 tonluk Alüminyum Ekstrüzyon presi ile üretim sektörüne girmiştir.

KURTOĞLU Alüminyum; İstanbul'a yaklaşık 100 km mesafede Çorlu'da bulunmaktadır. 31.000 m² kapalı alanda faaliyetini sürdürmektedir. Son yapılan yatırımlarla şirketimiz modern bir entegre tesis haline ulaşmıştır.

- Yıllık kapasite ~ 34.000 ton,
- Yaklaşık ~ 500 kalifiye eleman,
- ISO 9001:2015 kalite sistemi,
- Qualicoat Seaside Belgesi,
- Qualanod Belgesi,
- CE Belgesi,

Şirketimizin ana özellikleri aşağıda da belirtilmiştir:

- Kalıphane Bölümü (Tel erozyon, İşleme Merkezi)
- Alüminyum Ekstrüzyon Presleri; (800 ton, 1460 ton, 1880 ton, 1460/1880 ton, 2100 ton ve 2600 ton),
- Elokso Tesisi (75.000 Amper - 412.500 m² / Ay)
- Elektrostatik Toz Boya Tesisi (750.000 m² / Ay)
- Mekanik İşlem Bölümü (CNC İşleme Merkezi)

KURTOĞLU Alüminyum Ürünleri; Amerika, New York, Los Angeles, San Francisco, İsviçre, Almanya, Avusturya, Belçika, İsveç, Arnavutluk, İngiltere , Yunanistan, Bulgaristan, Kıbrıs, Sırbistan, Karadağ, Macaristan, Gürcistan, Hırvatistan, Türkmenistan, Kırgızistan, Azerbaycan, Moldova, Ukrayna, Makedonya, Kosova, Romanya, Beyaz Rusya, Çek Cumhuriyeti, Libya, Irak, Cezayir, Tunus, Katar, Nijerya, İsrail, Gana, Gabon, Fransa, Hindistan, Suudi Arabistan, Burkina Faso, Etiyopya, Mısır, Fil Dişi Sahili, Fas, Polonya, Hollanda, Rusya Federasyonu, Madagaskar, Nijer, Tanzania, Mozambik, Norveç, Lübnan, Mayotte, Filistin, Senegal, Somali, Benin, Kanada, Panama' ya ihraç edilmektedir.

KURTOĞLU ALÜMİNYUM müşterilerine sıfır hata ile hizmet vermeyi temel alarak çalışmalarını sürdürmektedir.

'The countries of export; İhracat yapılan ülkeler'



Kurtoğlu Aluminium countries of export / İhracat yapılan ülkeler.

- U.S. America / Amerika
- New York
- Los Angeles
- San Francisco
- Switzerland / İsviçre
- Germany / Almanya
- Austria / Avusturya
- Belgium / Belçika
- Sweden / İsveç
- Albania / Arnavutluk
- England / İngiltere
- Greece / Yunanistan
- Bulgaria / Bulgaristan
- Cyprus / Kıbrıs
- Serbia / Sırbistan
- Montenegro / Karadağ
- Hungary / Macaristan
- Georgia / Gürcistan
- Croatia / Hırvatistan
- Turkmenistan / Türkmenistan
- Kyrgyzstan / Kırgızistan
- Azerbaijan / Azerbaycan
- Moldova / Moldova
- Ukraine / Ukrayna
- Macedonia / Makedonya
- Kosovo
- Romania / Romanya
- Belarus / Beyaz Rusya
- Czech Republic / Çek Cumhuriyeti
- Libya / Libya
- Iraq / Irak
- Algeria / Cezair
- Tunisia / Tunus
- Qatar / Katar
- Nigeria / Nijerya
- Israel / İsrail
- Ghana / Gana
- Gabon / Gabon
- France / Fransa
- India / Hindistan
- Saudi Arabia / Suudi Arabistan
- Burkina Faso / Burkina Faso
- Ethiopia / Etiyopya
- Egypt / Mısır
- Ivory Coast / Fil Dişi Sahili
- Morocco / Fas
- Poland / Polonya
- The Netherlands / Hollanda
- Russia / Rusya
- Madagascar / Madagaskar
- Niger / Nijer
- Tanzania / Tanzanya
- Mozambique / Mozambik
- Benin
- Palestine / Filistin
- Canada / Kanada
- Lebanon / Lübnan
- Mayotte / Mayotte
- Norway / Norveç
- Panama
- Senegal / Senegal
- Somali



KURTOĞLU[®]
ALUMINIUM





QUALITY POLICY

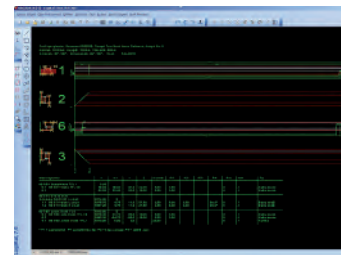
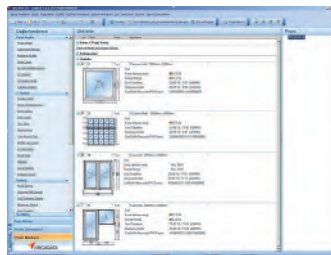
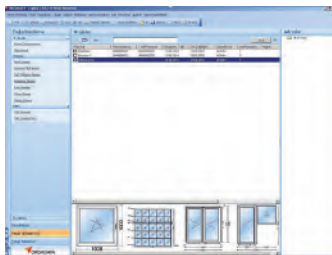
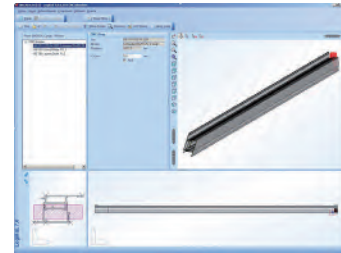
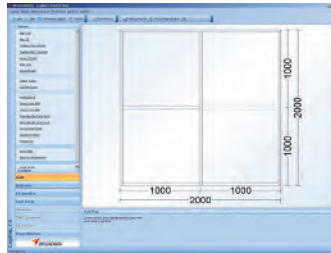
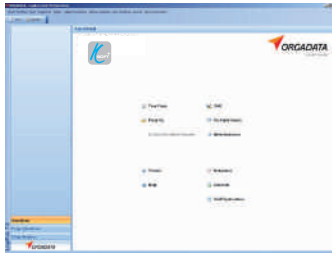
KALİTE POLİTİKASI

The company's quality policy is based upon the pillars of product quality, state of the art technology, customer satisfaction, training, environmental awareness, and continuous development. Kurtoğlu always implements this policy in all of its operations and units.

Şirketin kalite politikası ürün kalitesine, yeni teknolojilere, müşteri memnuniyetine, eğitime, çevre duyarlılığına ve sürekli gelişime dayanır. Kurtoğlu, her zaman tüm faaliyet ve birimlerinde bu politikayı uygular.

ORGADATA SOFTWARE & SOLUTION PARTNER

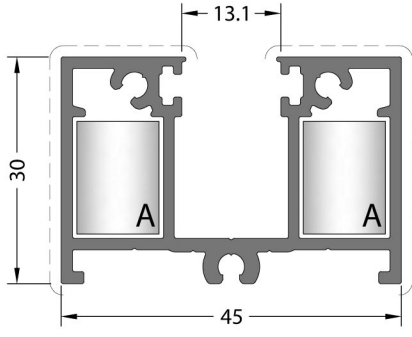
The conversational software Ksoft® matches perfectly with the requirements of all aluminum windows, door and curtain wall systems configuration, functionality and menu navigation. Ksoft® is a complete service package for architectural profile applications, and features all you need in the metal-processing operations with tremendous speed and perfection.



ORGADATA YAZILIM VE ÇÖZÜM ORTAĞI

İletişimli Ksoft® yazılımı tüm alüminyum pencereler, kapı ve cephe sistemleri konfigürasyon, fonksiyonel ve menü navigasyonu ile ilgili ihtiyaçları karşılar. Ksoft® yazılım programı mimari profil uygulaması ve metal işinde gerekli özellikleri optimum hız ve olağanüstü sunan tam bir program paketidir.

PROFILES / PROFILLER



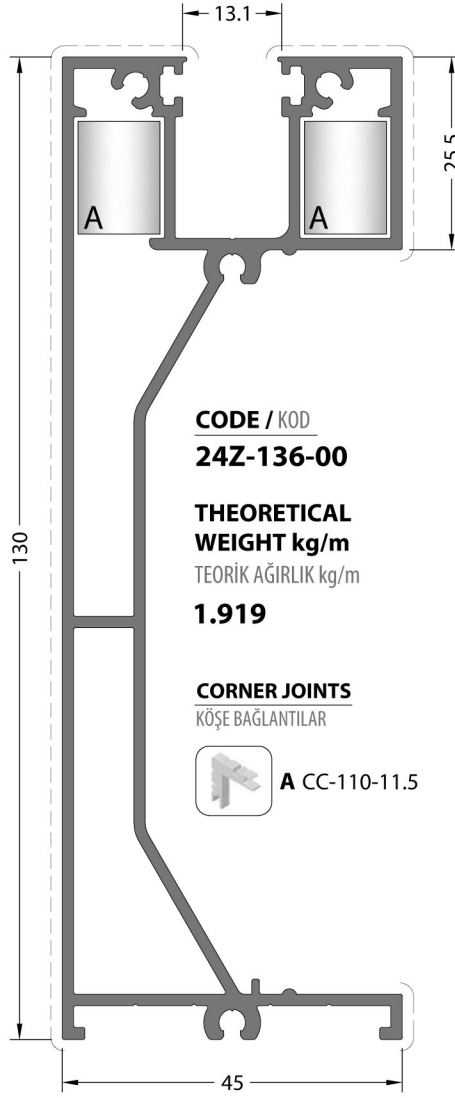
CODE / KOD
24Z-135-00

THEORETICAL WEIGHT kg/m
TEORİK AĞIRLIK kg/m
0.879

CORNER JOINTS
KÖŞE BAĞLANTILAR



A CC-110-11.5



CODE / KOD
24Z-136-00

THEORETICAL WEIGHT kg/m
TEORİK AĞIRLIK kg/m
1.919

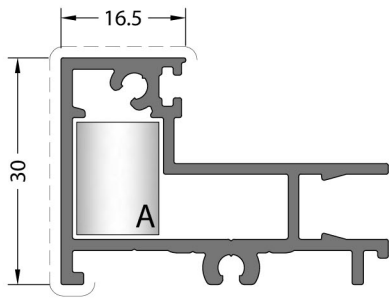
CORNER JOINTS
KÖŞE BAĞLANTILAR



A CC-110-11.5

CODE / KOD
24Z-137-00

THEORETICAL WEIGHT kg/m
TEORİK AĞIRLIK kg/m
0.602



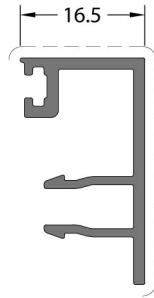
CODE / KOD
24Z-138-00

THEORETICAL WEIGHT kg/m
TEORİK AĞIRLIK kg/m
0.692

CORNER JOINTS
KÖŞE BAĞLANTILAR

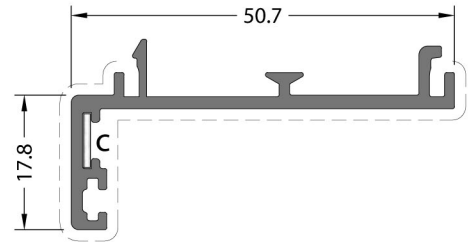


A CC-110-11.5



CODE / KOD
24Z-139-00

THEORETICAL WEIGHT kg/m
TEORİK AĞIRLIK kg/m
0.300



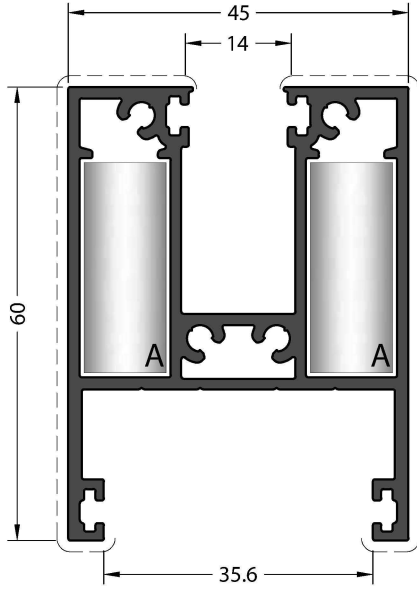
CODE / KOD
24Z-235-00

THEORETICAL WEIGHT kg/m
TEORİK AĞIRLIK kg/m
0.439

CORNER JOINTS
KÖŞE BAĞLANTILAR



C LC-107



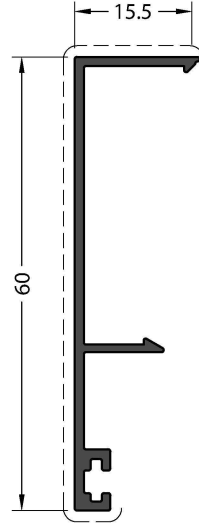
CODE / KOD
24Z-131-00

THEORETICAL WEIGHT kg/m
TEORİK AĞIRLIK kg/m
1.374

CORNER JOINTS
KÖŞE BAĞLANTILAR

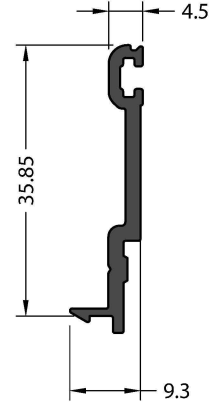


A CC-123-11.5



CODE / KOD
24Z-133-00

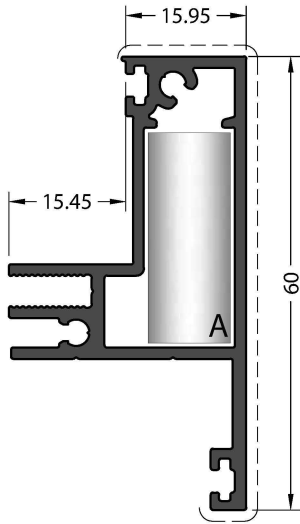
THEORETICAL WEIGHT kg/m
TEORİK AĞIRLIK kg/m
0.312



Mill Finish / Pres
No visible surface. / Görünen yüzeyi yoktur.

CODE / KOD
24Z-134-00

THEORETICAL WEIGHT kg/m
TEORİK AĞIRLIK kg/m
0.247



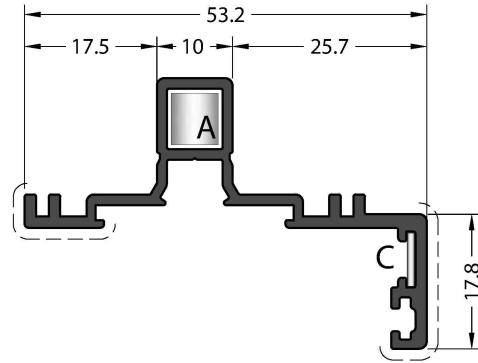
CODE / KOD
24Z-132-00

THEORETICAL WEIGHT kg/m
TEORİK AĞIRLIK kg/m
0.790

CORNER JOINTS
KÖŞE BAĞLANTILAR



A CC-123-11.5



CODE / KOD
24Z-231-00

THEORETICAL WEIGHT kg/m
TEORİK AĞIRLIK kg/m
0.523

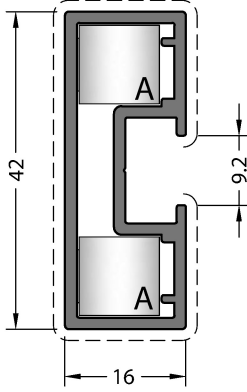
CORNER JOINTS
KÖŞE BAĞLANTILAR



A CC-107-06.9



C LC-107



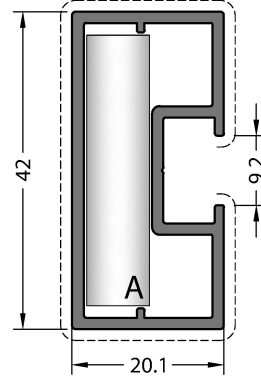
CODE / KOD
24D-271-00

THEORETICAL WEIGHT kg/m
TEORİK AĞIRLIK kg/m
0.553

MECHANICAL CORNER JOINTS
MEKANİK KÖŞE BAĞLANTILAR



A KC-801-10.5



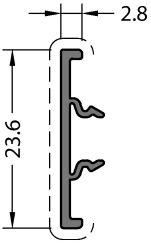
CODE / KOD
24D-272-00

THEORETICAL WEIGHT kg/m
TEORİK AĞIRLIK kg/m
0.574

MECHANICAL CORNER JOINTS
MEKANİK KÖŞE BAĞLANTILAR

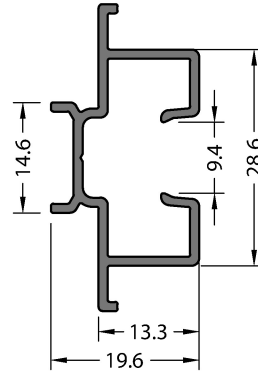


A LC-0936



CODE / KOD
24Z-232-00

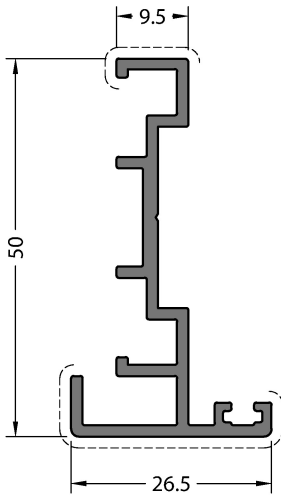
THEORETICAL WEIGHT kg/m
TEORİK AĞIRLIK kg/m
0.111



Mill Finish / Pres
No visible surface.
Görünen yüzeyi yoktur.

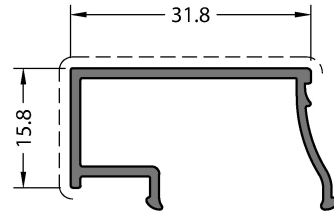
CODE / KOD
24Z-233-00

THEORETICAL WEIGHT kg/m
TEORİK AĞIRLIK kg/m
0.332



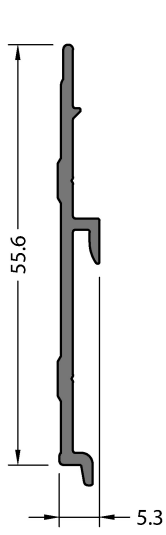
CODE / KOD
24D-571-00

THEORETICAL WEIGHT kg/m
TEORİK AĞIRLIK kg/m
0.509



CODE / KOD
24Z-831-00

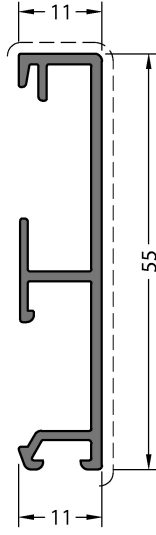
THEORETICAL WEIGHT kg/m
TEORİK AĞIRLIK kg/m
0.274



Mill Finish / Pres
No visible surface.
Görünen yüzeyi yoktur.

CODE / KOD
20-159-00

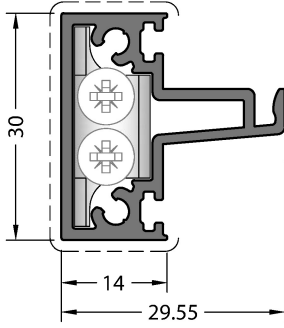
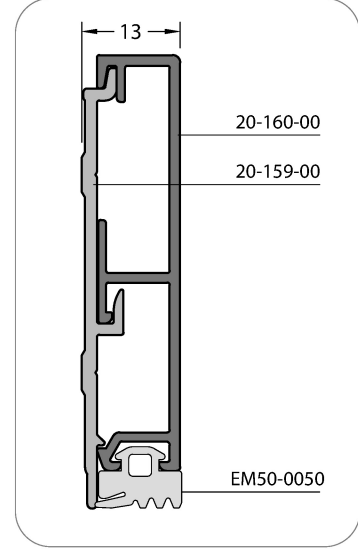
THEORETICAL
WEIGHT kg/m
TEORİK AĞIRLIK kg/m
0.297



CODE / KOD
20-160-00

THEORETICAL
WEIGHT kg/m
TEORİK AĞIRLIK kg/m
0.383

Application Details / Uygulama Detayı



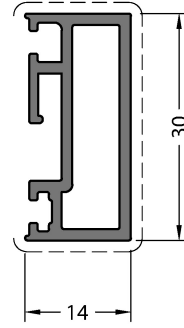
CODE / KOD
24Z-301-00

THEORETICAL
WEIGHT kg/m
TEORİK AĞIRLIK kg/m
0.528

CORNER JOINTS
KÖŞE BAĞLANTILAR

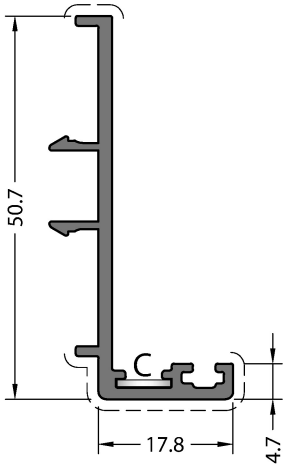


A CA24Z-301-26.4



CODE / KOD
24Z-302-00

THEORETICAL
WEIGHT kg/m
TEORİK AĞIRLIK kg/m
0.388



CODE / KOD
24Z-236-00

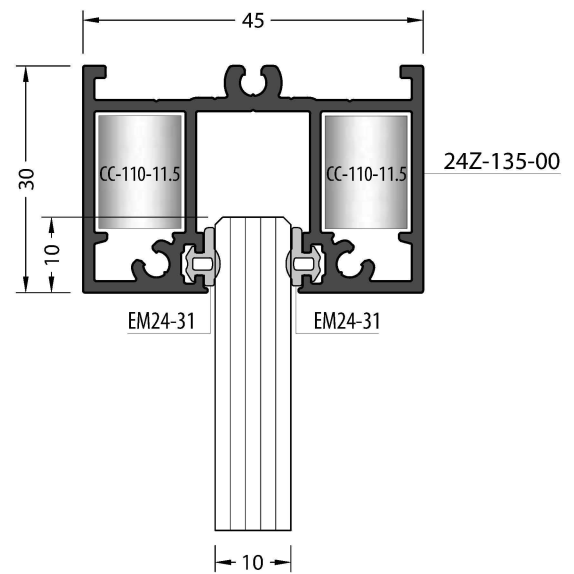
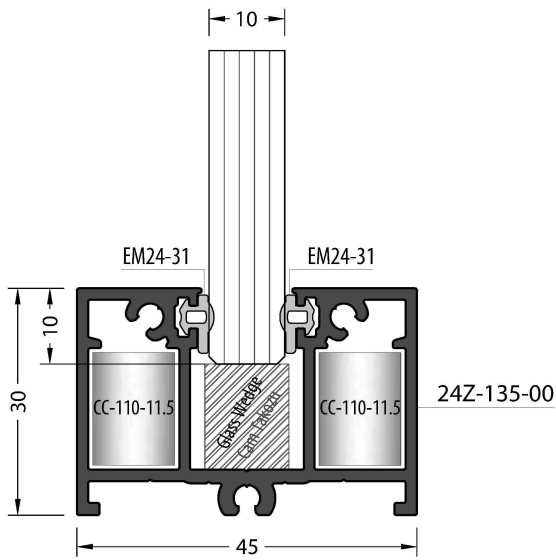
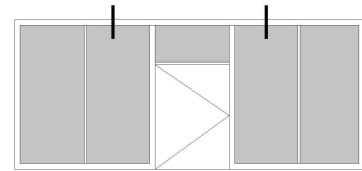
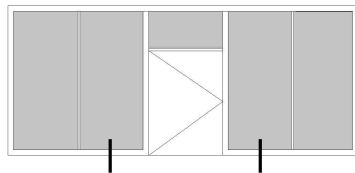
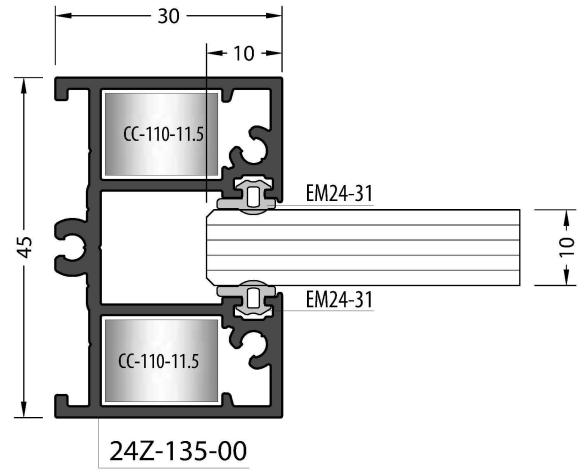
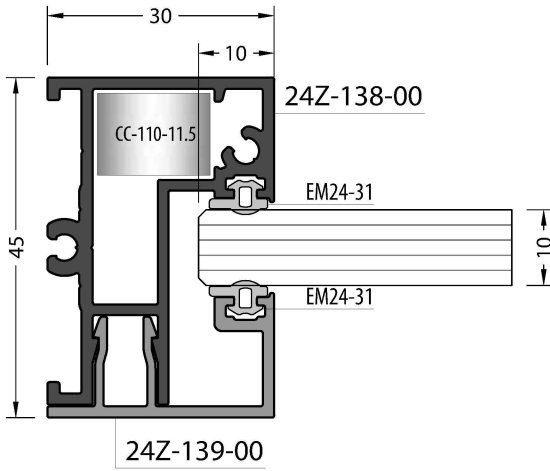
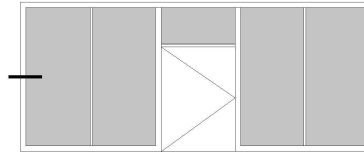
THEORETICAL
WEIGHT kg/m
TEORİK AĞIRLIK kg/m
0.416

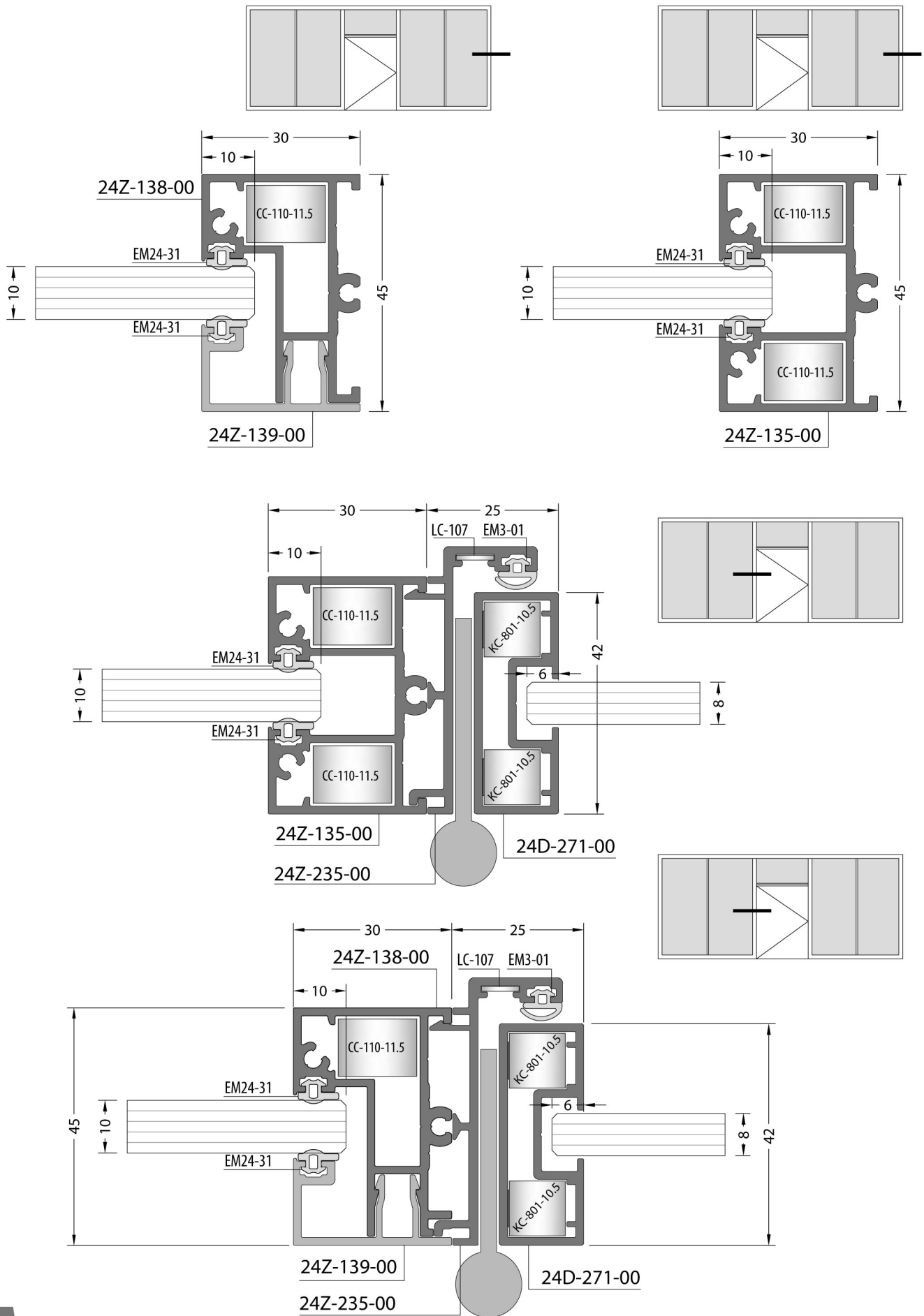
CORNER JOINT
KÖŞE BAĞLANTI

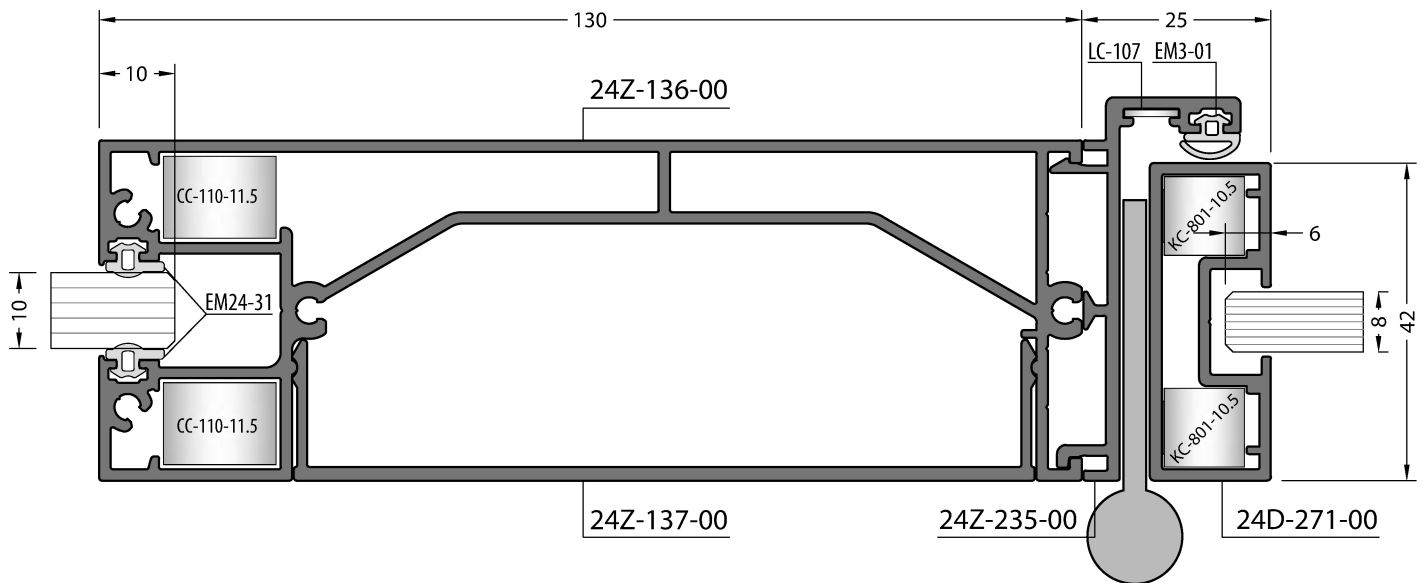
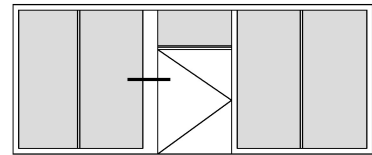
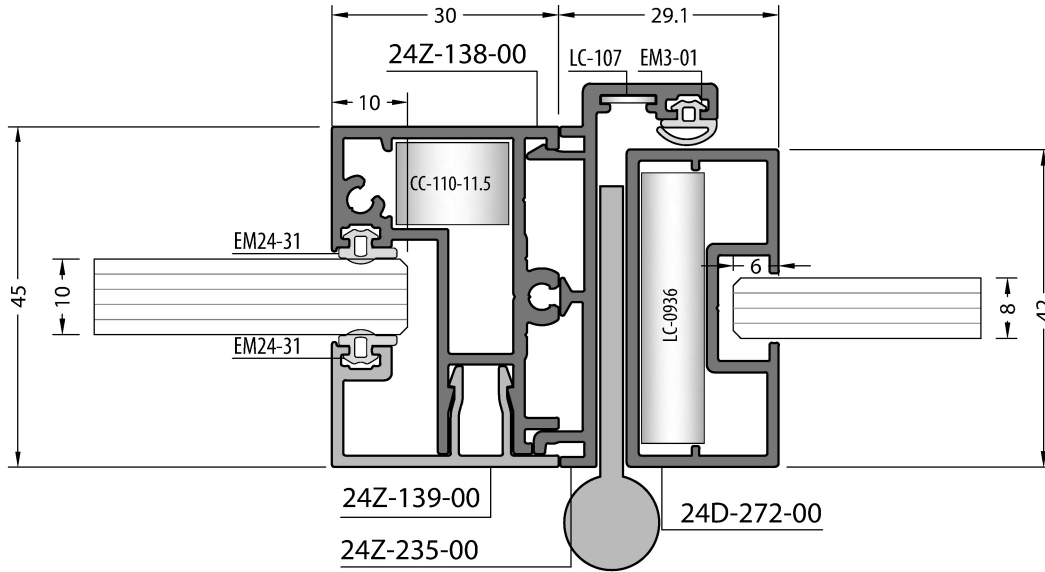
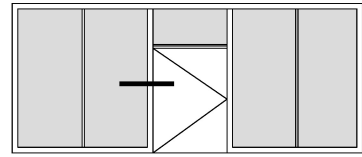


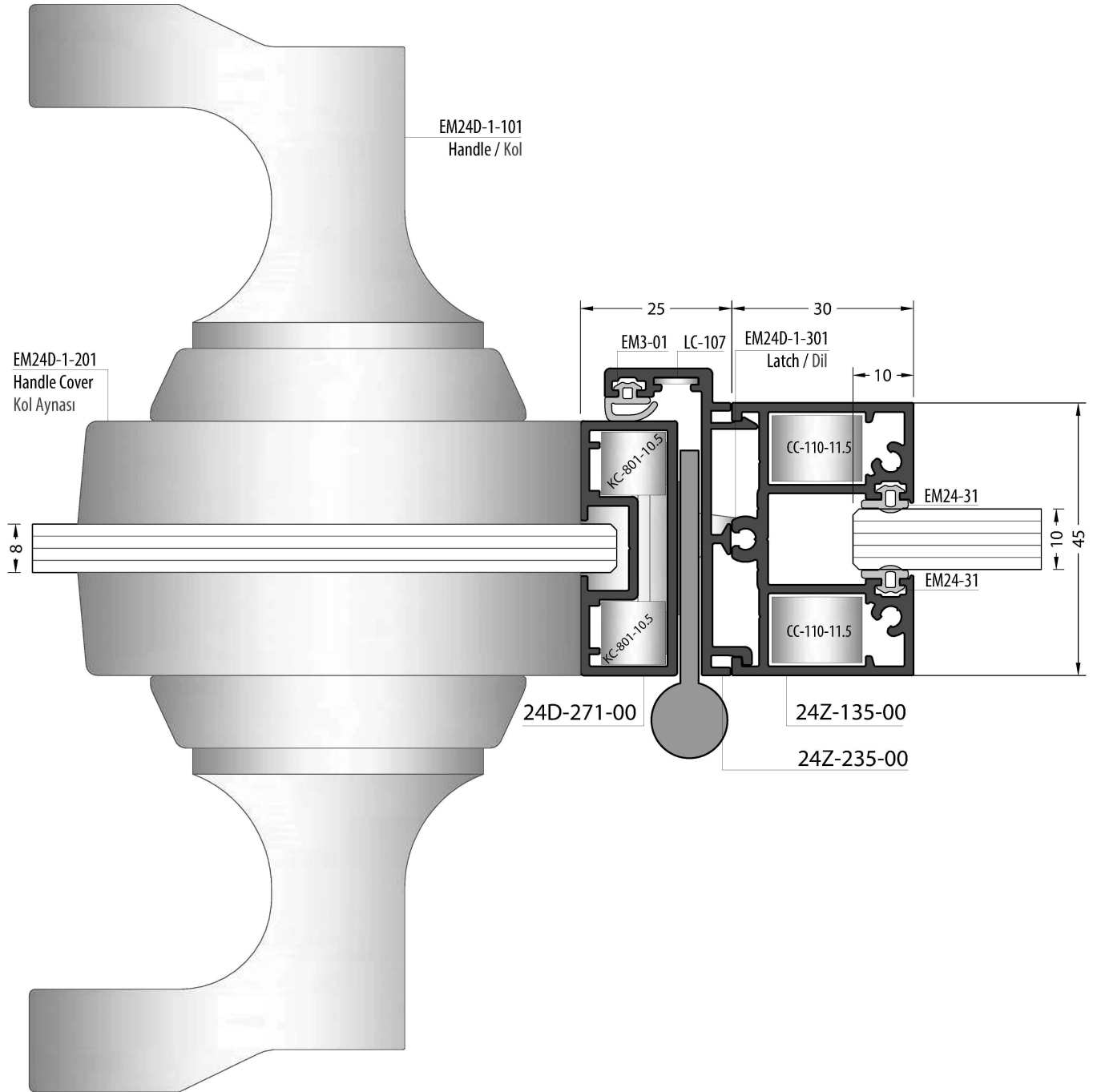
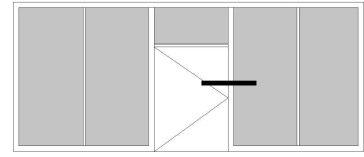
C LC-107

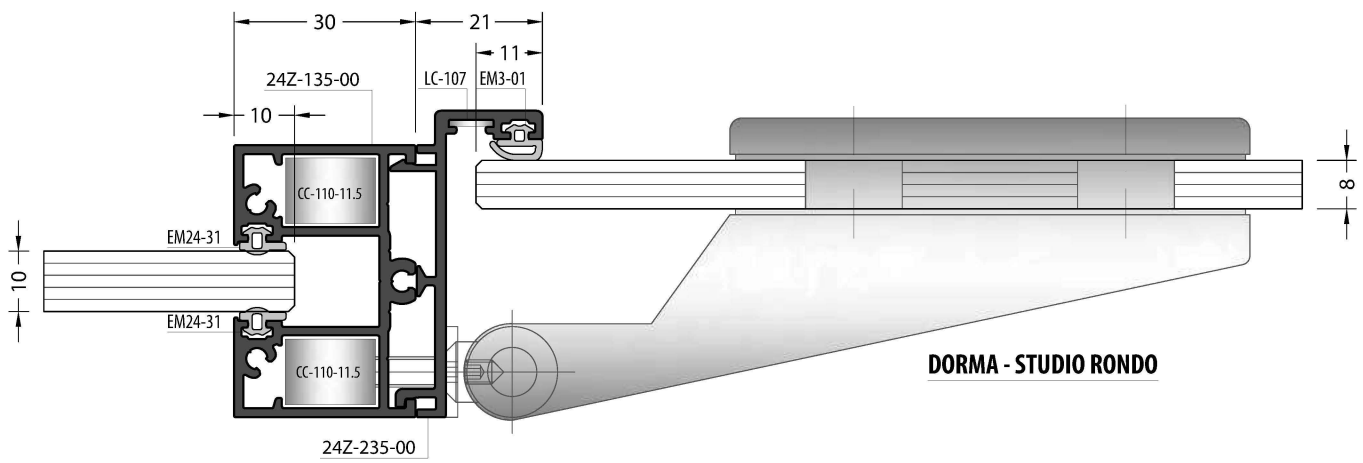
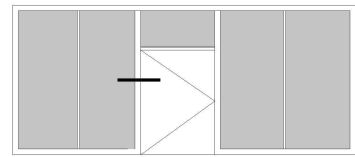
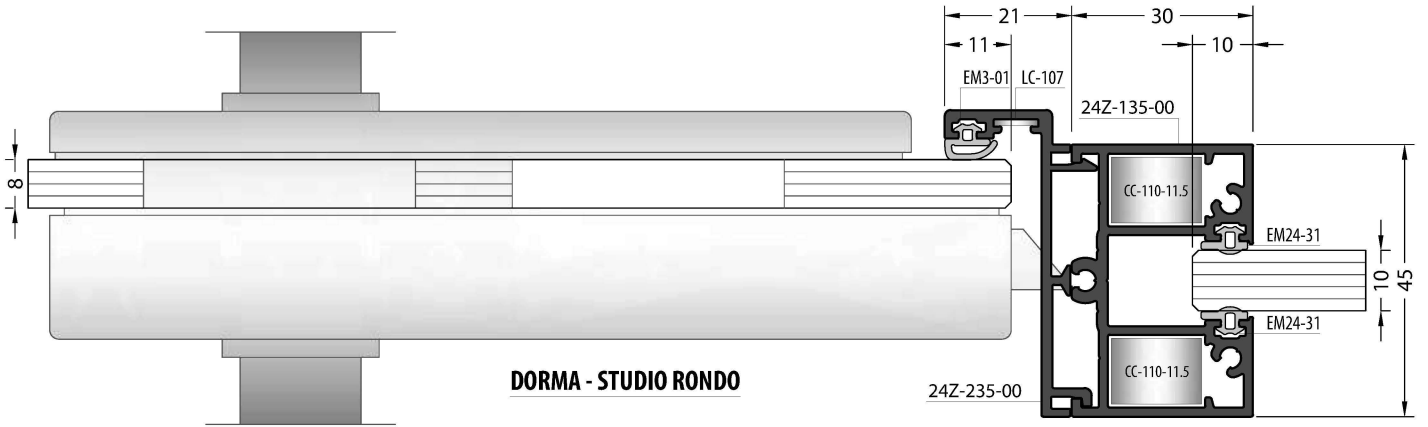
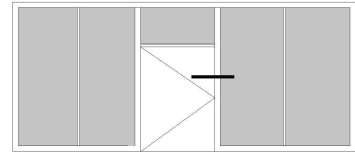
DETAILS / DETAYLAR

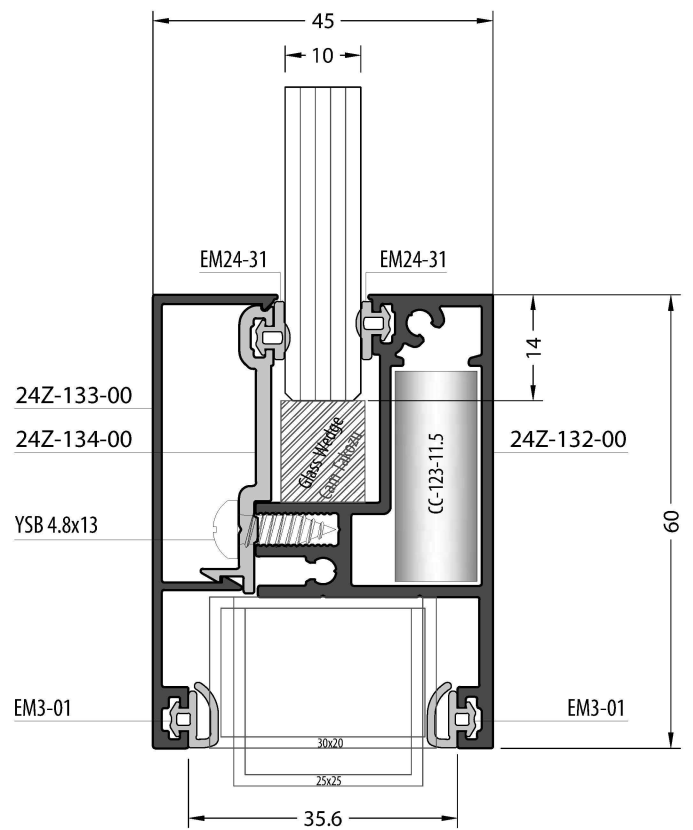
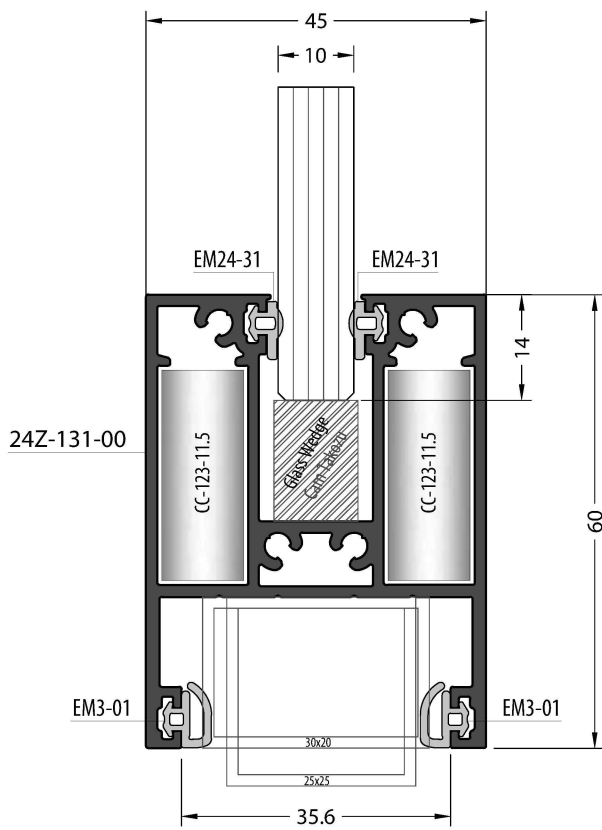
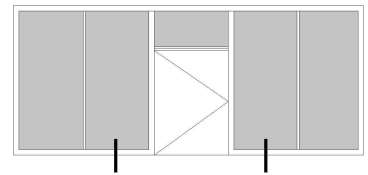
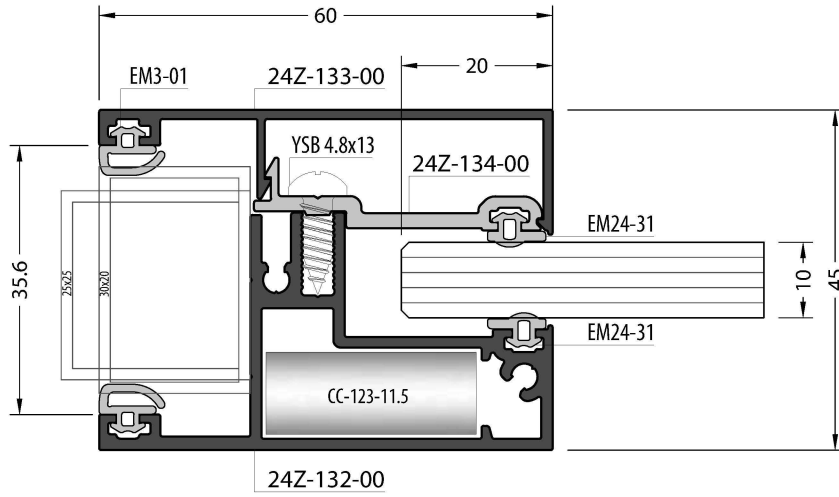
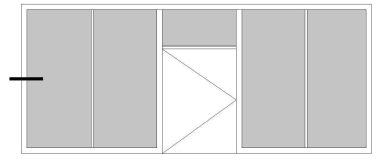


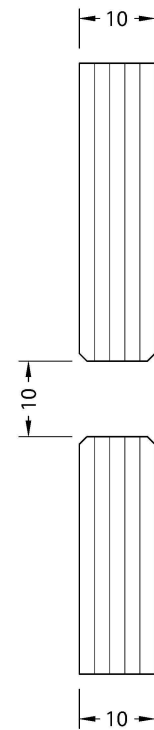
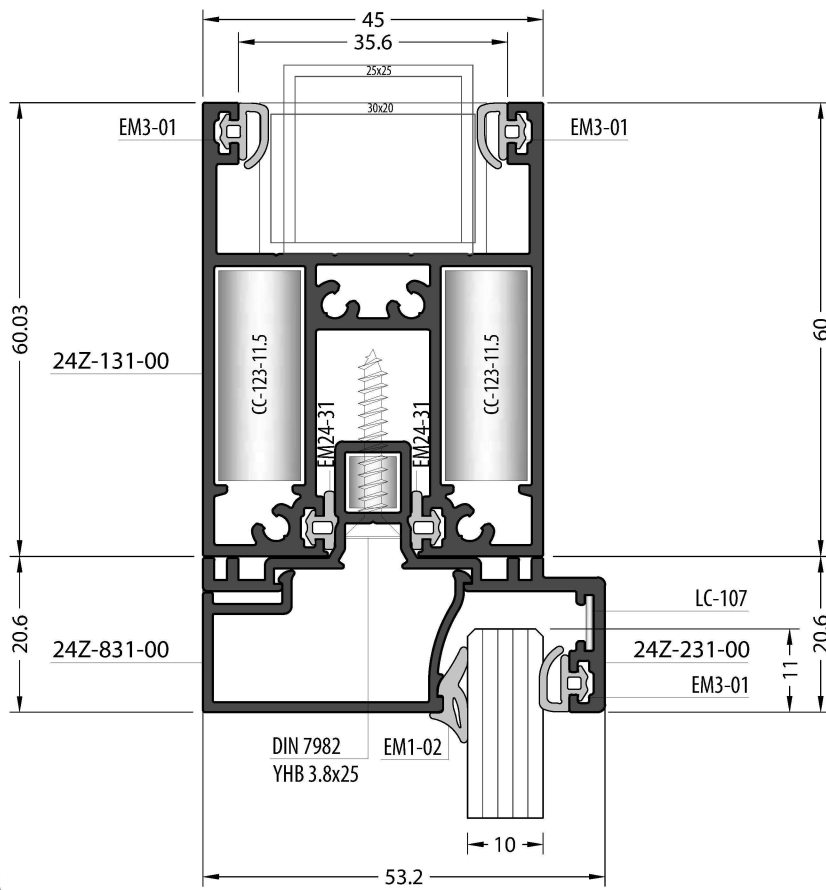
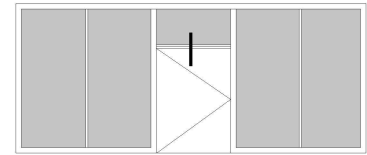
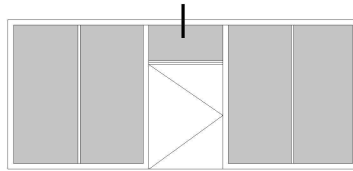
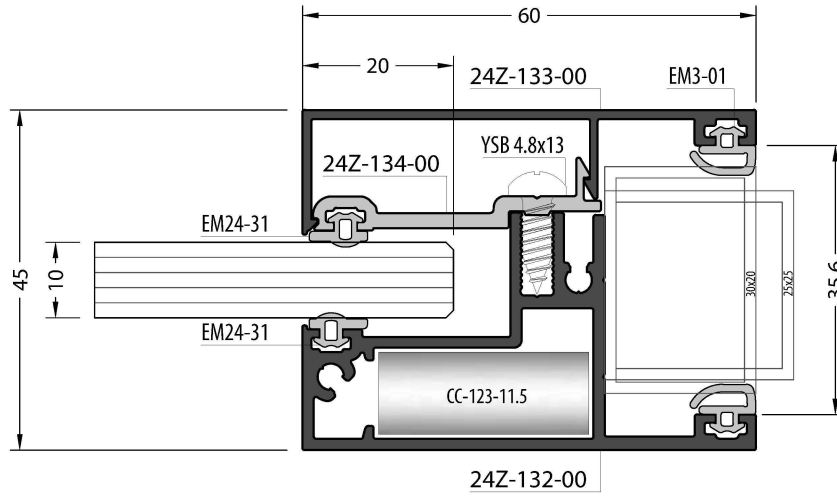
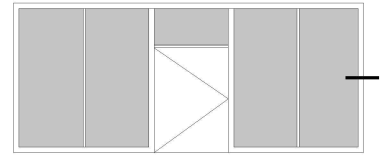


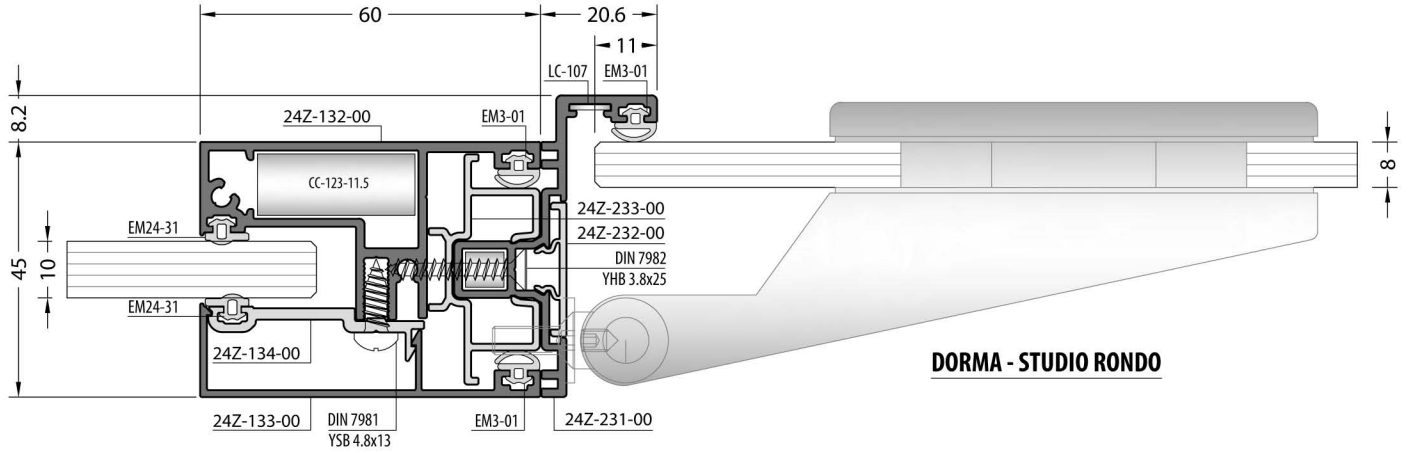
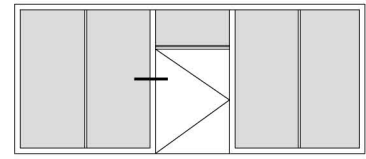




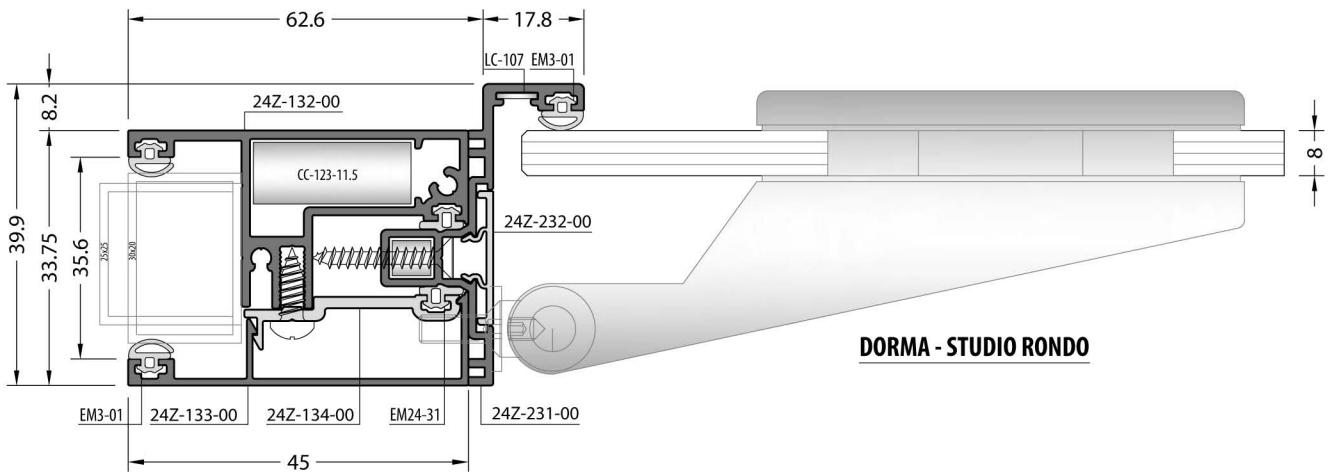
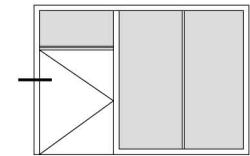




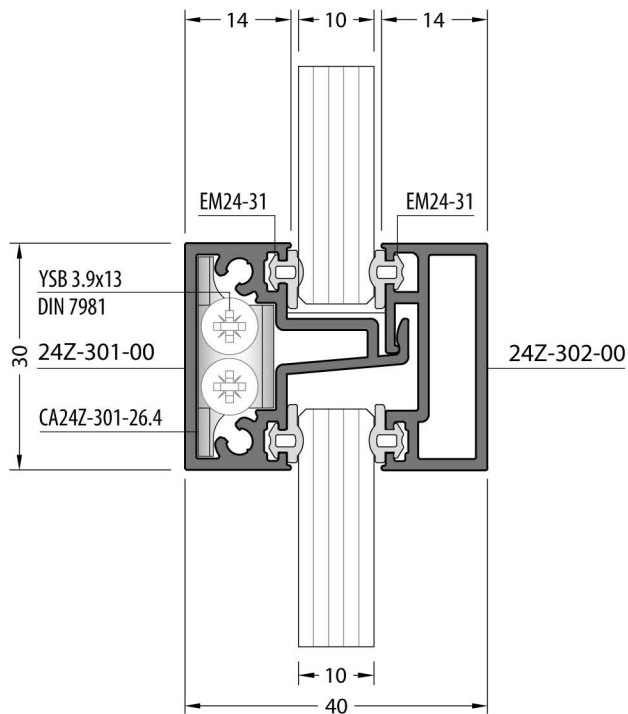
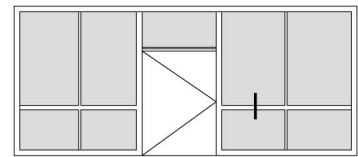
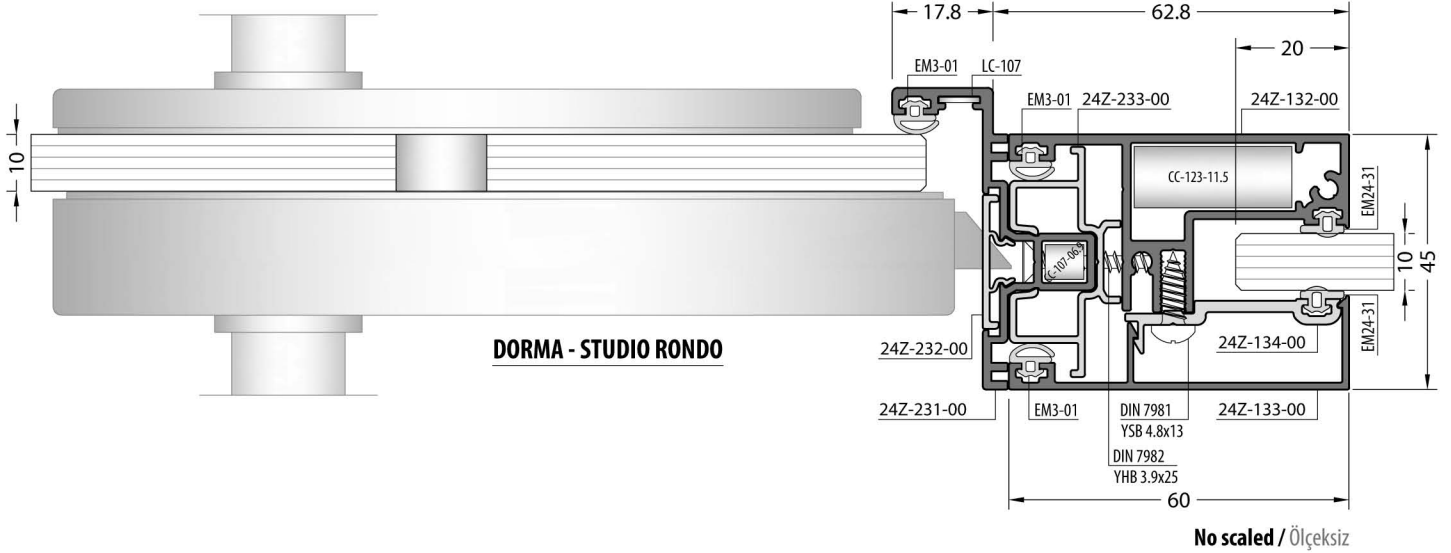
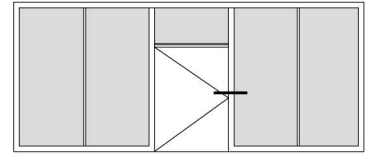


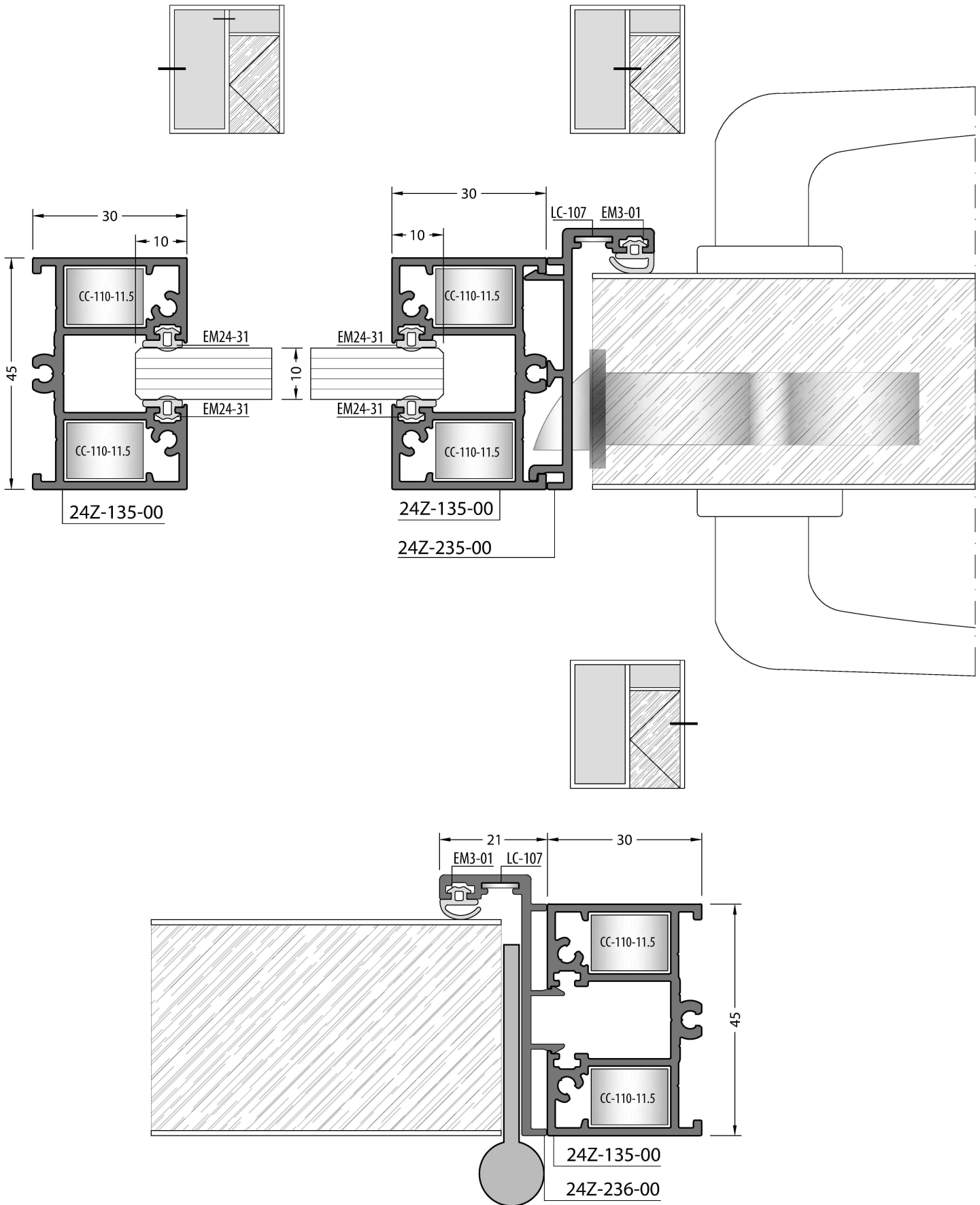


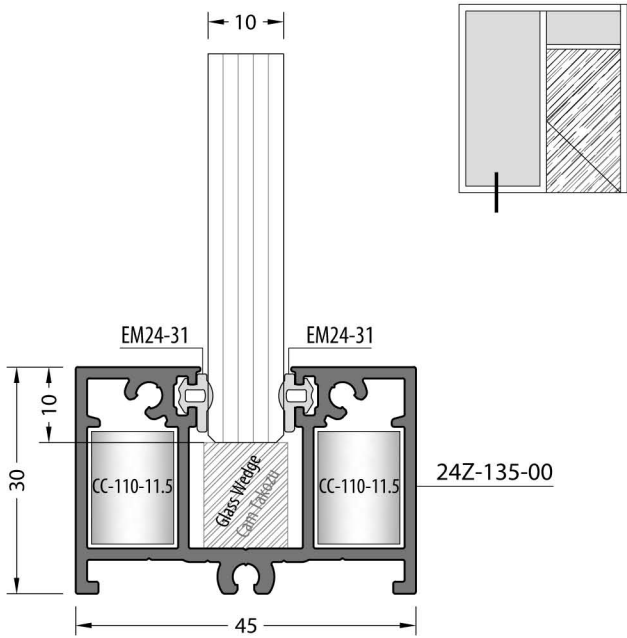
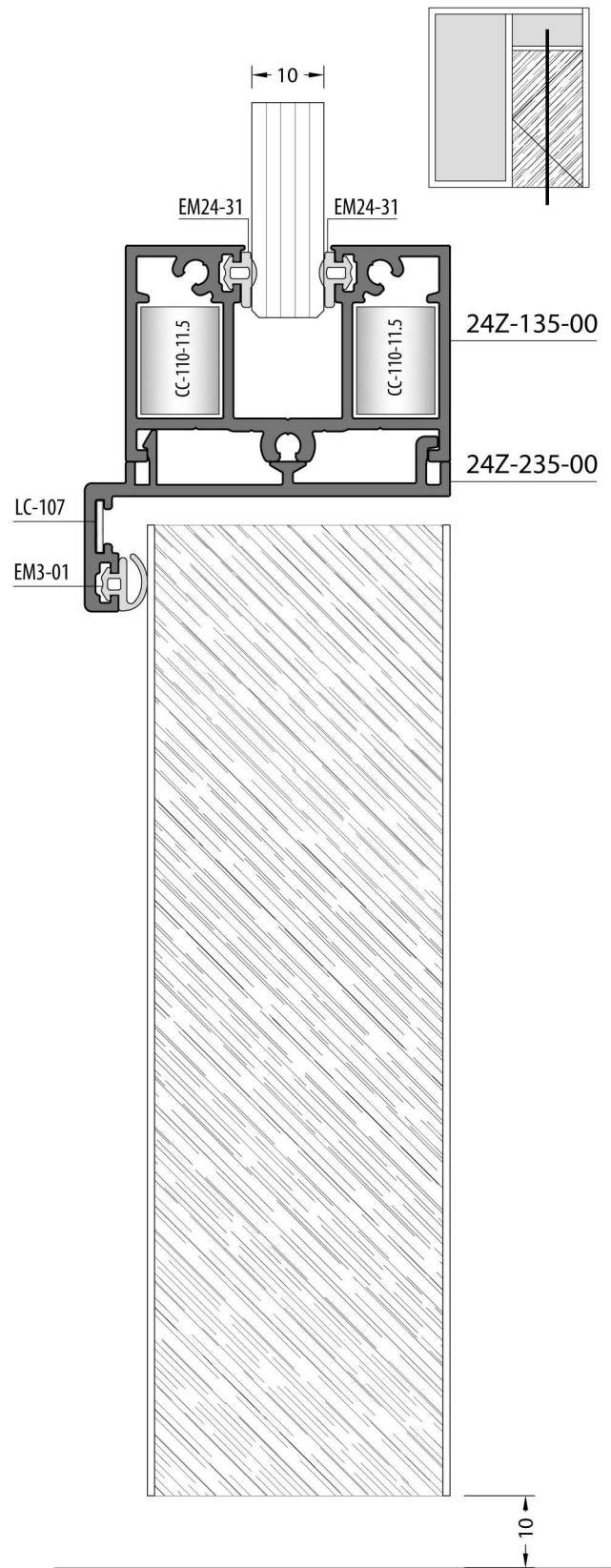
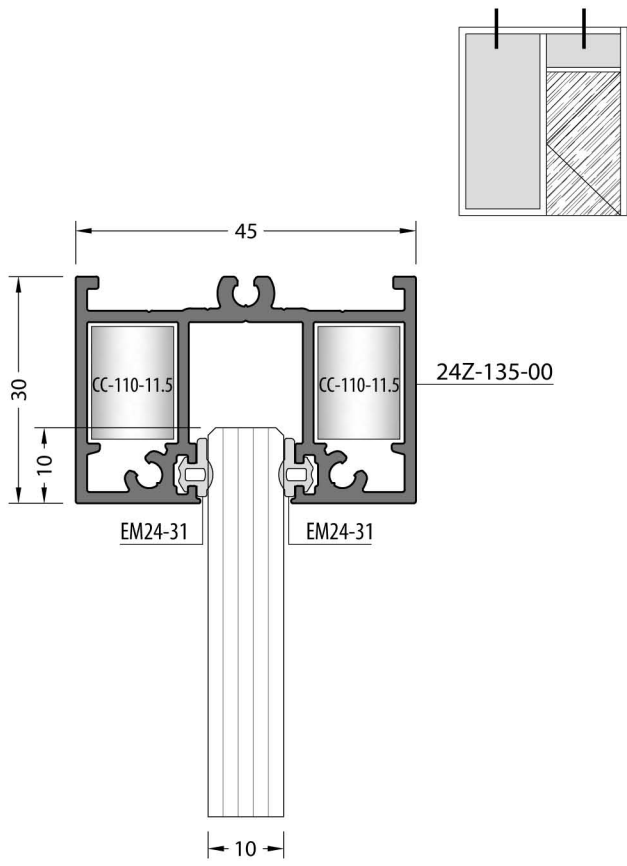
No scaled / Ölçeksiz



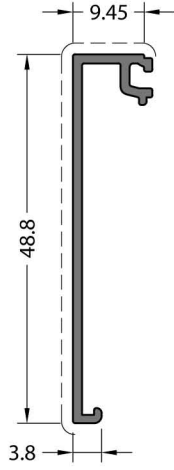
No scaled / Ölçeksiz





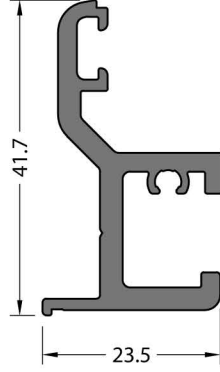


Separator Profiles / Separatör Profilleri



CODE / KOD
24Z-142-00

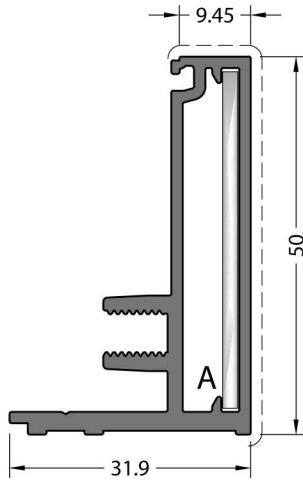
THEORETICAL WEIGHT kg/m
TEORİK AĞIRLIK kg/m
0.225



Mill Finish / Pres
No visible surface. / Görünen yüzeyi yoktur.

CODE / KOD
24Z-143-00

THEORETICAL WEIGHT kg/m
TEORİK AĞIRLIK kg/m
0.647



CODE / KOD
24Z-141-00

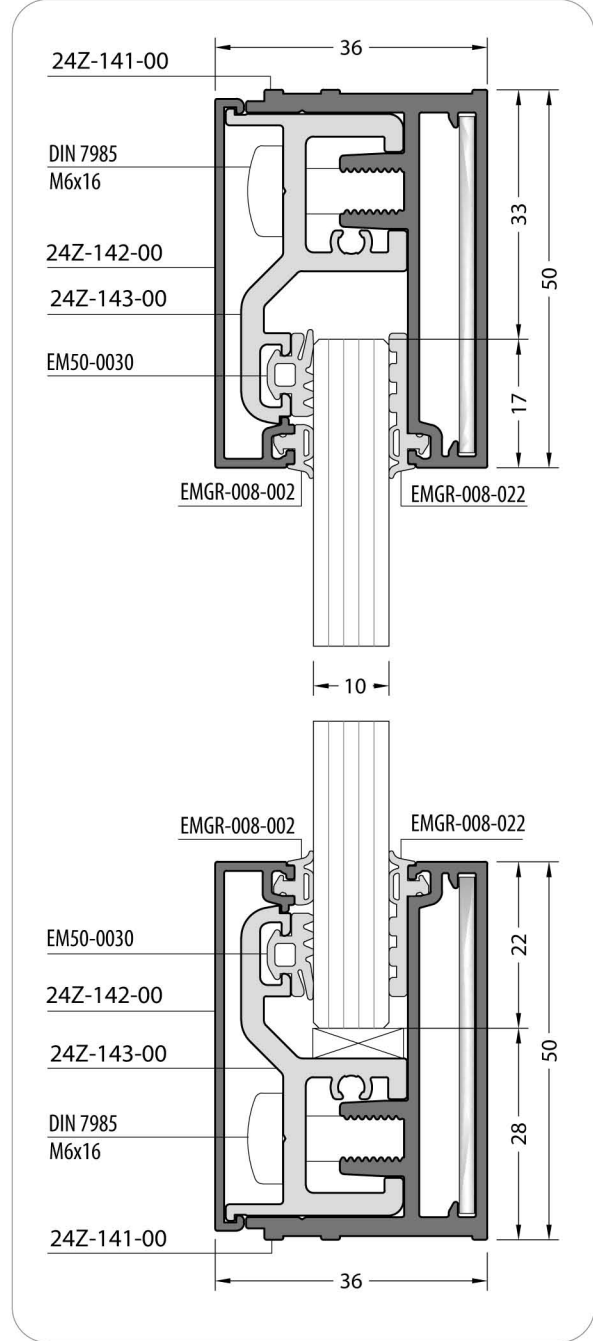
THEORETICAL WEIGHT kg/m
TEORİK AĞIRLIK kg/m
0.769

CORNER JOINTS
KÖŞE BAĞLANTILAR

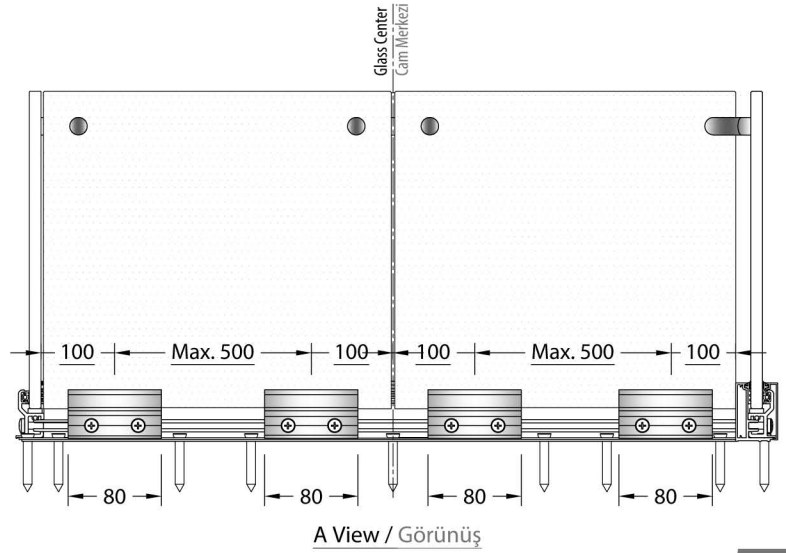
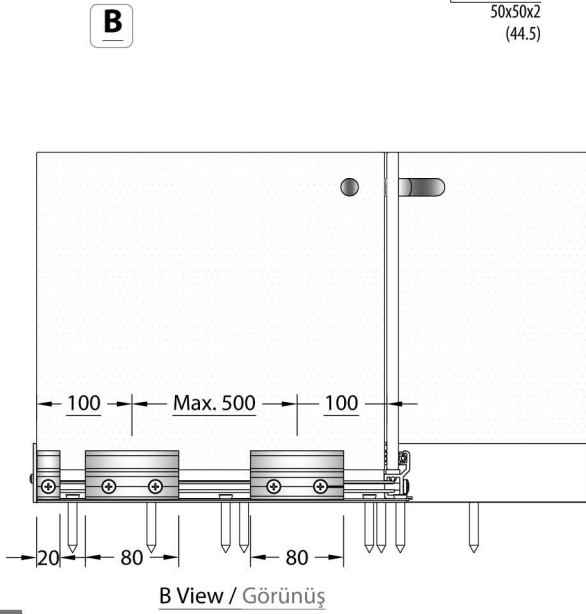
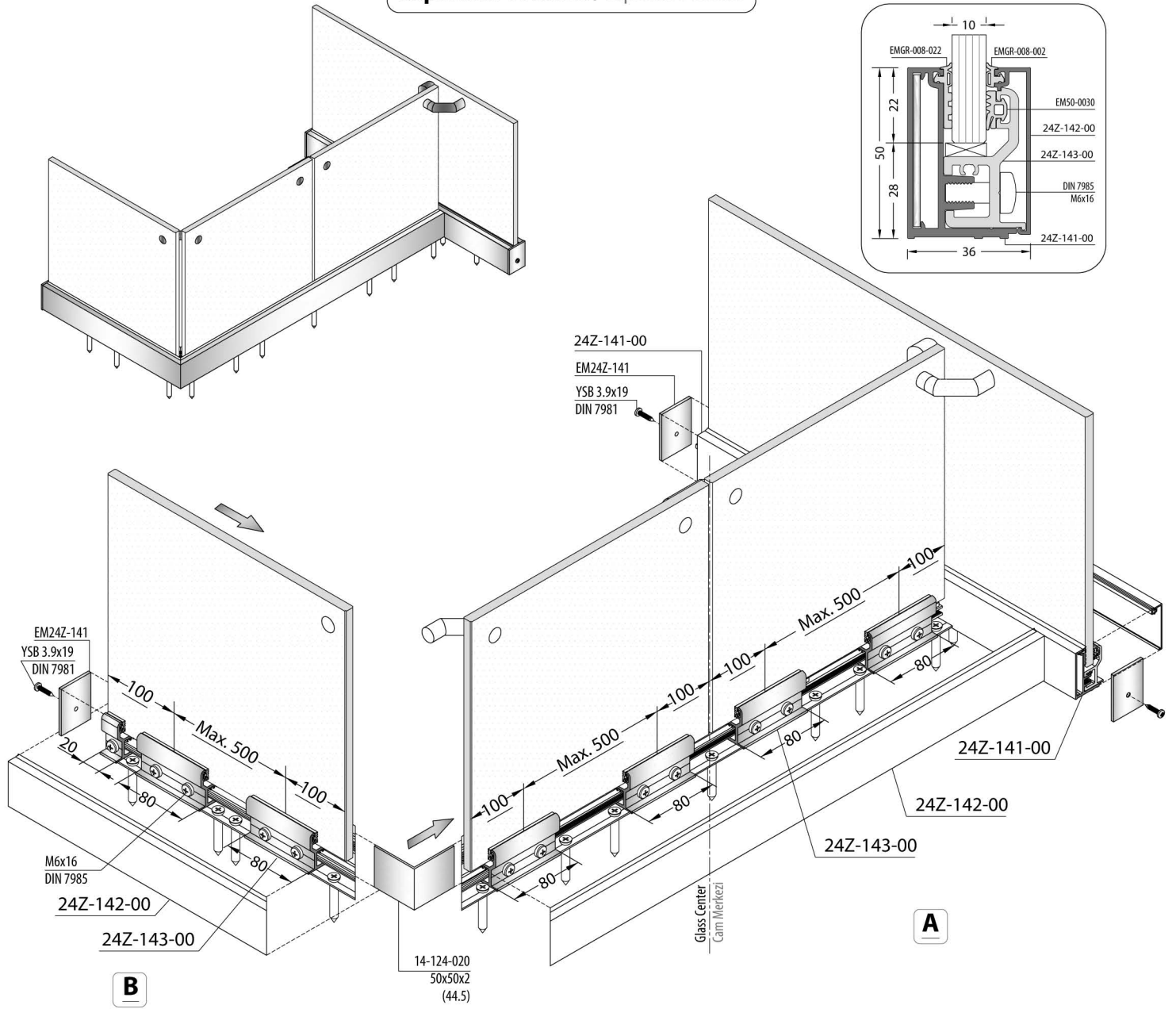


A 14-124-020
50x50x2 (44.5)

Details / Detay










Seperator Profiles / Separatör Profilleri










ACCESSORIES / AKSEUARLAR

CORNER JOINTS / KÖŞE BAĞLANTILAR

PACKAGE CODE PAKET KODU	DRAWING ÇİZİM	PROFILE CODE PROFİL KOD	CUTTING SIZE KESİM ÖLÇÜSÜ	APPLICATION PROFILES ÇALIŞTIĞI PROFİLLER
CC-107-06.9		09-107-00	06.9 mm	24Z-231-00
CC-110-11.5		09-110-00	11.5 mm	24Z-135-00
CC-123-11.5		09-123-00	11.5 mm	24Z-131-00 24Z-132-00
KC-801-10.5		09-123-00	11.5 mm	24D-271-00
LC-0936		-	-	24D-272-00
CA24Z-301-26.4		-	26.4 mm	24Z-301-00
LC-107		-	-	24Z-231-00
50x50x2 (44.5)		14-124-020	44.5 mm	24Z-141-00


GASKETS / FİTİLLER

CODE KOD	DRAWING ÇİZİM	DESCRIPTION AÇIKLAMA	MATERIAL MALZEME	WEIGHT AĞIRLIK kg/m	IN ONE PACKAGE PAKET MİKTARI
EM24-31		SASH GASKET KANAT FİTİLİ	EPDM	0.015	625 m
EM3-01		ACOUSTICAL GASKET BİNİ FİTİLİ	EPDM	0.032	400 m
EM1-02		INSIDE GLASS GASKET İÇ CAM FİTİLİ	EPDM	0.040	375 m
EM20-160		KICK PLATE GASKET EŞİK FİTİLİ	EPDM	0.026	150 m
EM50-0030		GLASS GASKET CAM FİTİLİ	EPDM	0.050	300 m
EMGR-008-022		GLASS GASKET CAM FİTİLİ	EPDM	0.056	250 m
EMGR-008-002		GLASS GASKET CAM FİTİLİ	EPDM	0.024	500 m

ACCESSORIES / AKSEUARLAR

CODE / KOD	VIEW RESİM	DESCRIPTION AÇIKLAMA	QUANTITY MİKTAR
EM24D-1-101		HANDLE KOL	1 Pieces / Adet
EM24D-1-201		HANDLE COVER KOL AYNASI	1 Pieces / Adet
EM24D-1-301		HANDLE DİL	1 Pieces / Adet
EM24D-1-401		STRIKER KARŞILIK	1 Pieces / Adet
EM24D-1-501		HINGE MENTEŞE	1 Pieces / Adet
EM24D-1-601		DOOR LATCH KAPI SÜRGÜSÜ	1 Pieces / Adet

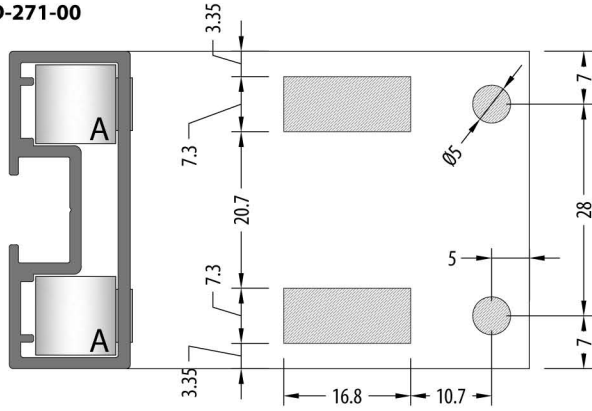
ACCESSORIES / AKSEUARLAR

PACKAGE CODE PAKET KODU	DRAWING ÇİZİM	APPLICATION PROFILES ÇALIŞTIĞI PROFİLLER	DESCRIPTION AÇIKLAMA	MATERIAL MALZEME
EM24Z-141		24Z-141-00	CAP / KAPAK	ALUMINIUM ALÜMİNYUM

MECHANICAL CORNER JOINT DRILING DIMENSIONS

MEKANİK BAĞLANTI DELİK ÖLÇÜLERİ

24D-271-00

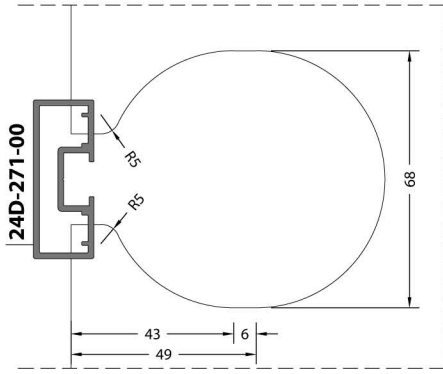


KC-801-10.5

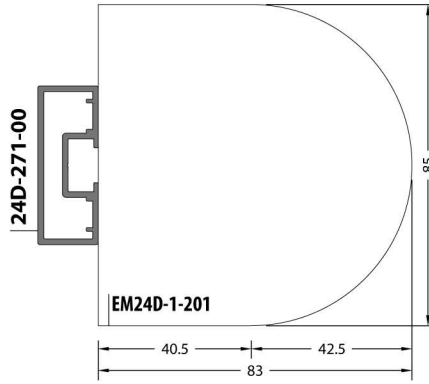
24D Manuel Punch Machine
24D Manuel Punch Makinası



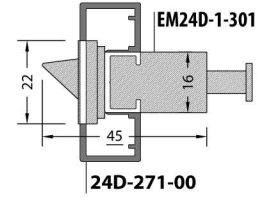
GLASS DOOR - GLASS DRILING DIMENSIONS
CAM KAPI - CAM DELME ÖLÇÜLERİ

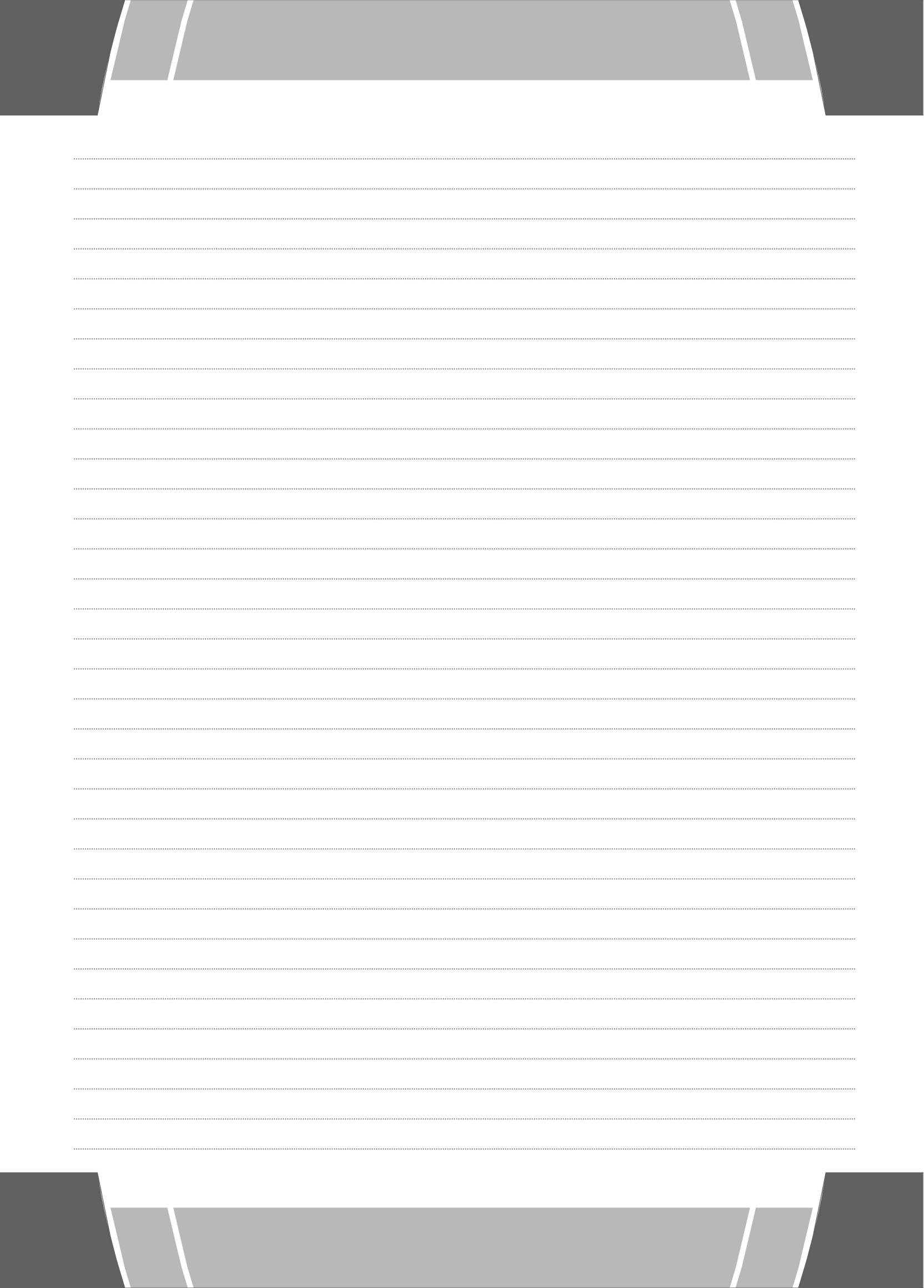


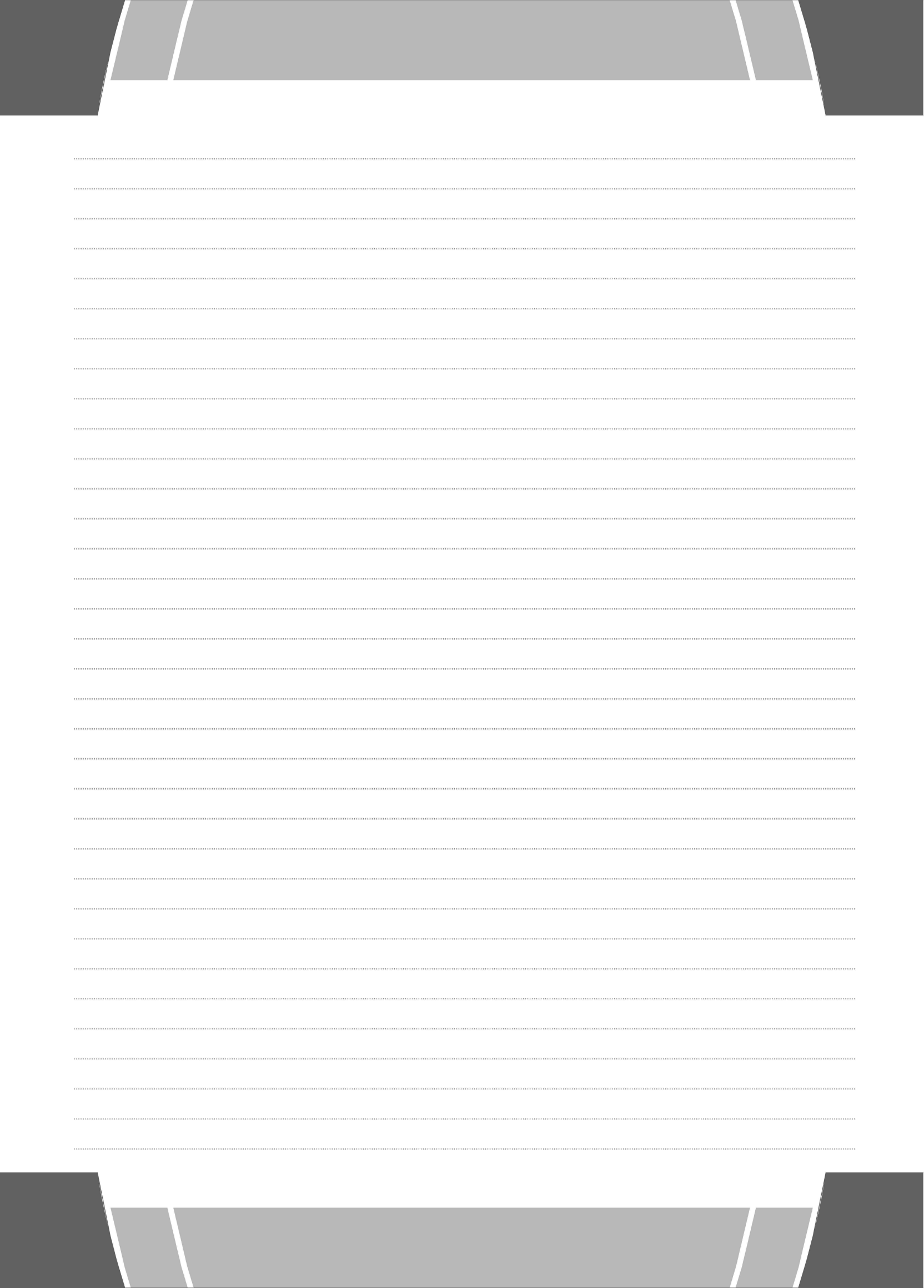
GLASS DOOR - HANDLE COVER PLATE DIMENSIONS
CAM KAPI - KOL AYNASI ÖLÇÜLERİ



GLASS DOOR - LATCH DRILING DIMENSIONS
CAM KAPI - DİL FREZELEME ÖLÇÜLERİ









KURTOĞLU BAKIR KURŞUN SANAYİ A.Ş.

Velimeşe Organize Sanayi Bölgesi Akbayır Yolu
Küme Evler No: 81 Ergene 59851 Tekirdağ / Türkiye
T: 0 282 684 70 00 F: 0 282 684 70 01
www.kurtogluas.com