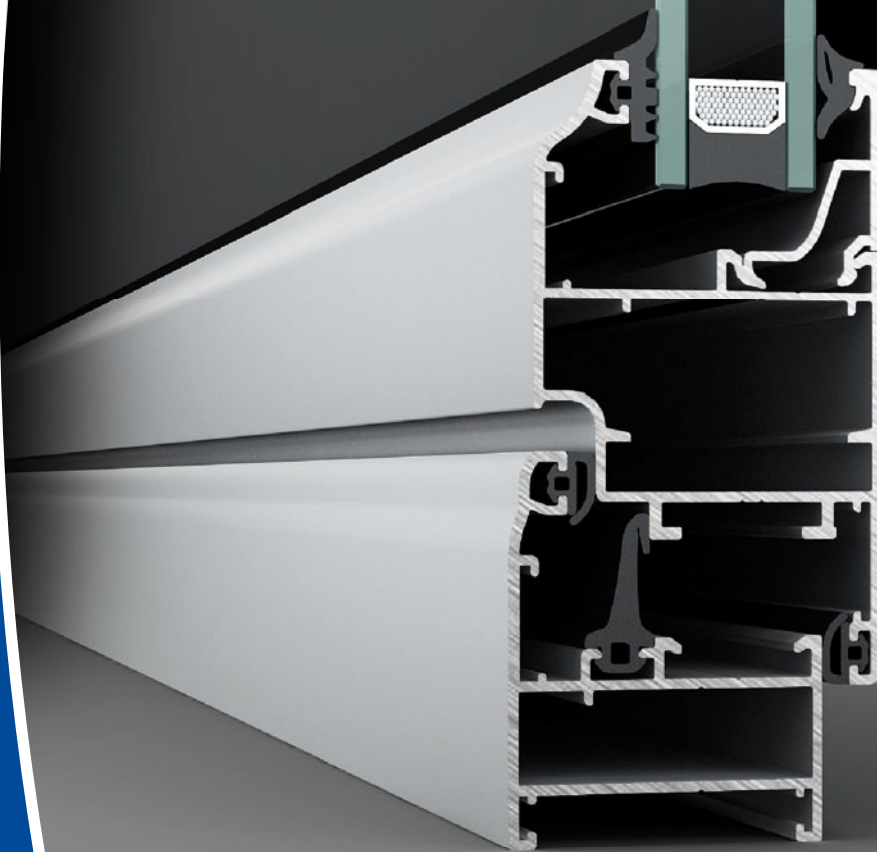


EDITION / VERSİYON  
07/2013

WINDOW AND DOOR  
PENCERE VE KAPI

**SYSTEM 36C**  
SİSTEM 36C



 **Lorenzoline**<sup>®</sup>  
aluminium profile system

### System Properties / Sistem Özellikleri

- Modern Design / Modern Dizayn  
Frame Height / Et Kalınlığı : 36 mm  
Vent Height / Kanat Geniřlięi : 43 mm  
Safety Drainage System / Güvenli Tahliye Sistemi  
EPDM Gaskets / EPDM Fitol  
Glazing From 4 mm to 20 mm  
Cam Kullanımı 4 mm'den 20 mm  
Euro Groove 1 / Standart Avrupa Kanal 1

### Code Logic / Kod Mantığı

36C

101

00

Factory Standard  
Fabrika Standartı

Group / Grup

Title / Seri

### Titles / Seriler

- 36C - System Name / Sistem Adı  
07 - Alternative Adapters / Alternatif Adaptörler  
08 - Glazing Beats / Cam Çıtalari  
09 - Extruded Corner Joints / Pres Köşe Takozu

### Groups / Gruplar

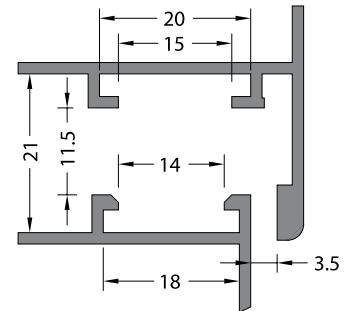
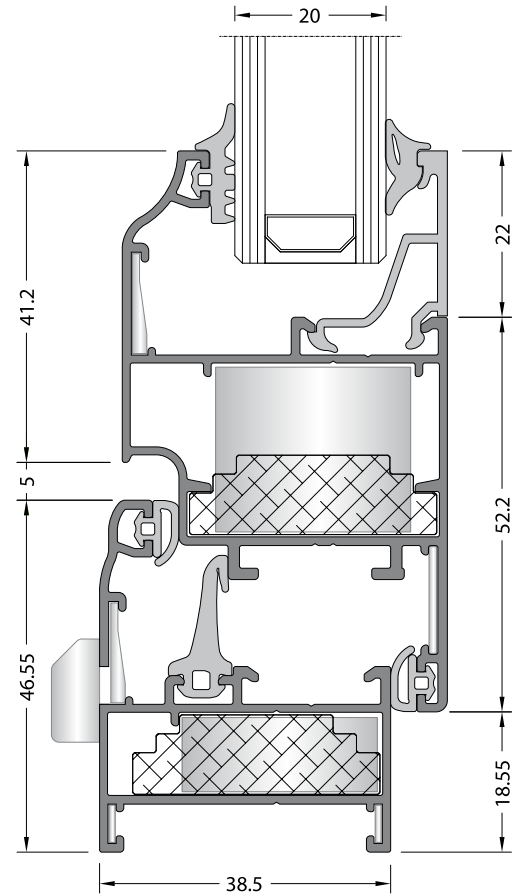
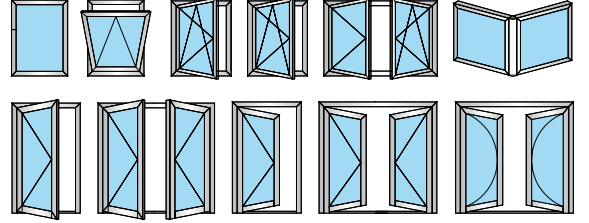
- 101 , 102 , ... - Frames / Kasalar  
201 , 211 , ... - Vents / Kanatlar  
301 , 302 , ... - Mullions / Orta Kayıtlar  
401 , 402 , ... - Kick Plates and Adapters / Etek ve Adaptörleri  
501 , 502 , ... - Adapters / Adaptörler

### Alloy / Alařım

- The alloys of the aluminium profiles are  
6060 and 6063 (AlMgSi 0,5 - F22 ) based  
on EN 12020-2 / 755-9 standarts  
Alüminyum profil alařımları 6060 ve 6063 (AlMgSi 0,5 - F22)  
EN 12020-2 / 755-9 standartlarına uygundur

\*All drawings are not scaled.  
\*Tüm çizimler ölçeksizdir.

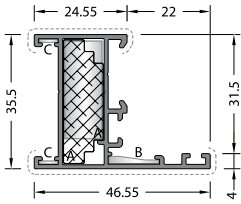
### Window & Door Opportunities / Pencere ve Kapi Seçenekleri



Euro Groove Section1  
Avrupa Kanal 1

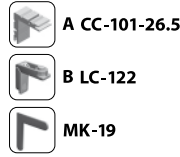
**Lorenzoline**  
aluminium profile system



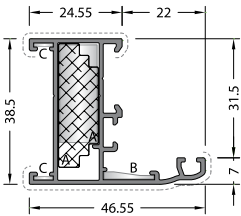
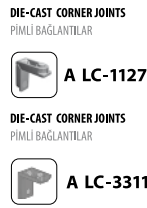


CODE / KOD  
**36C-101-10**

CORNER JOINTS  
KÖŞE BAĞLANTILAR

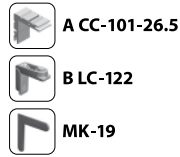


THEORETICAL WEIGHT kg/m  
TEORİK AĞIRLIK kg/m  
**0.531**

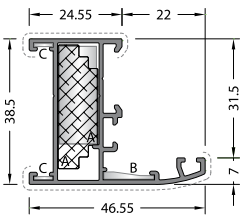


CODE / KOD  
**36C-111-10**

CORNER JOINTS  
KÖŞE BAĞLANTILAR



THEORETICAL WEIGHT kg/m  
TEORİK AĞIRLIK kg/m  
**0.558**

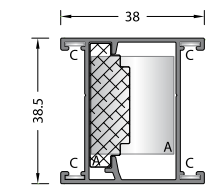


CODE / KOD  
**36C-121-10**

CORNER JOINTS  
KÖŞE BAĞLANTILAR

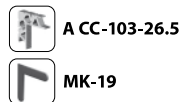


THEORETICAL WEIGHT kg/m  
TEORİK AĞIRLIK kg/m  
**0.558**

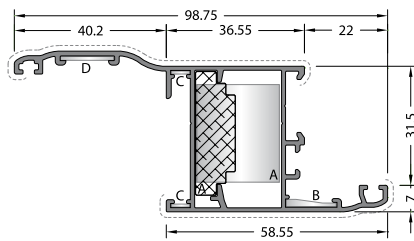


CODE / KOD  
**36C-109-10**

CORNER JOINTS  
KÖŞE BAĞLANTILAR

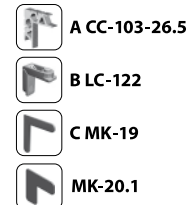


THEORETICAL WEIGHT kg/m  
TEORİK AĞIRLIK kg/m  
**0.531**

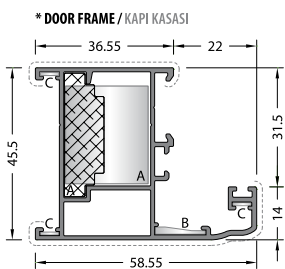


CODE / KOD  
**36C-171-10**

CORNER JOINTS  
KÖŞE BAĞLANTILAR

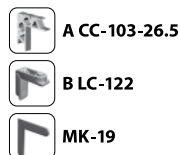


THEORETICAL WEIGHT kg/m  
TEORİK AĞIRLIK kg/m  
**0.873**

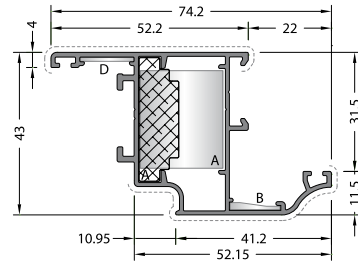


CODE / KOD  
**36C-117-10**

CORNER JOINTS  
KÖŞE BAĞLANTILAR



THEORETICAL WEIGHT kg/m  
TEORİK AĞIRLIK kg/m  
**0.808**

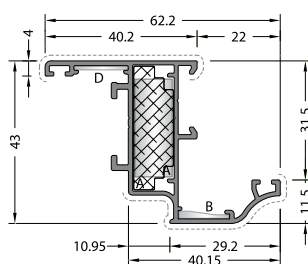


CODE / KOD  
**36C-212-10**

CORNER JOINTS  
KÖŞE BAĞLANTILAR



THEORETICAL WEIGHT kg/m  
TEORİK AĞIRLIK kg/m  
**0.758**

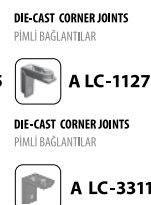


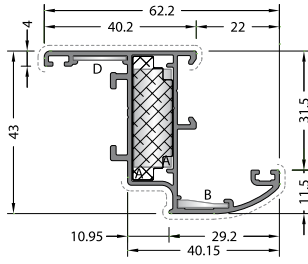
CODE / KOD  
**36C-211-10**

CORNER JOINTS  
KÖŞE BAĞLANTILAR



THEORETICAL WEIGHT kg/m  
TEORİK AĞIRLIK kg/m  
**0.654**





CODE / KOD  
**36C-221-10**

CORNER JOINTS  
KOŞE BAĞLANTILAR



**A CC-101-26.5**



**B LC-122**



**MK-20.1**

DIE-CAST CORNER JOINTS  
PİMLİ BAĞLANTILAR

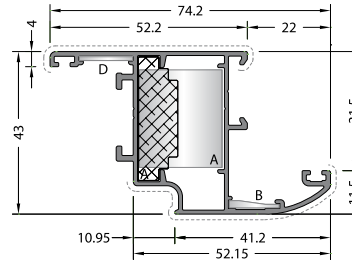


**A LC-1127**



**A LC-3311**

THEORETICAL WEIGHT kg/m  
TEORİK AĞIRLIK kg/m  
**0.670**



CODE / KOD  
**36C-222-10**

CORNER JOINTS  
KOŞE BAĞLANTILAR



**A CC-103-26.5**



**B LC-122**



**MK-20.1**

DIE-CAST CORNER JOINTS  
PİMLİ BAĞLANTILAR

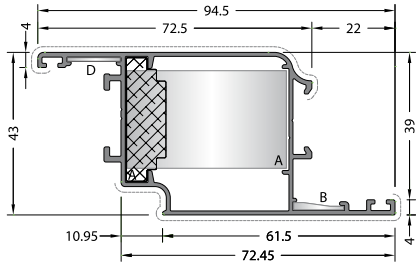


**A LC-2327**



**A LC-3311**

THEORETICAL WEIGHT kg/m  
TEORİK AĞIRLIK kg/m  
**0.774**



CODE / KOD  
**36C-204-10**

CORNER JOINTS  
KOŞE BAĞLANTILAR



**A CC-105-26.5**



**B LC-122**



**MK-20.1**

DIE-CAST CORNER JOINTS  
PİMLİ BAĞLANTILAR

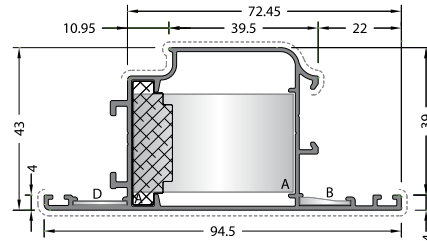


**A LC-4327**



**A LC-3311**

THEORETICAL WEIGHT kg/m  
TEORİK AĞIRLIK kg/m  
**0.855**



CODE / KOD  
**36C-205-10**

CORNER JOINTS  
KOŞE BAĞLANTILAR



**A CC-105-26.5**



**B LC-122**



**MK-20.1**

DIE-CAST CORNER JOINTS  
PİMLİ BAĞLANTILAR

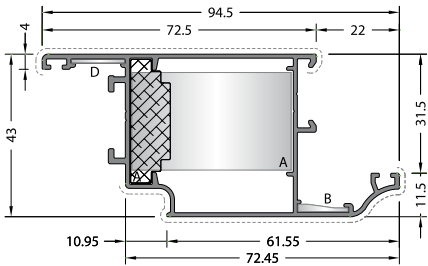


**A LC-4327**



**A LC-3311**

THEORETICAL WEIGHT kg/m  
TEORİK AĞIRLIK kg/m  
**0.856**



CODE / KOD  
**36C-214-10**

CORNER JOINTS  
KOŞE BAĞLANTILAR



**A CC-105-26.5**



**B LC-122**



**MK-20.1**

DIE-CAST CORNER JOINTS  
PİMLİ BAĞLANTILAR

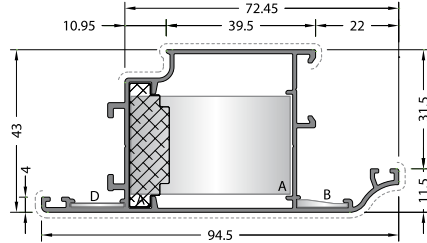


**A LC-4327**



**A LC-3311**

THEORETICAL WEIGHT kg/m  
TEORİK AĞIRLIK kg/m  
**0.873**



CODE / KOD  
**36C-215-10**

CORNER JOINTS  
KOŞE BAĞLANTILAR



**A CC-105-26.5**



**B LC-122**



**MK-20.1**

DIE-CAST CORNER JOINTS  
PİMLİ BAĞLANTILAR

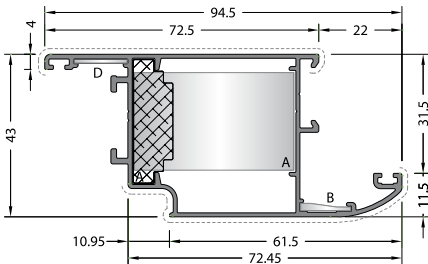


**A LC-4327**



**A LC-3311**

THEORETICAL WEIGHT kg/m  
TEORİK AĞIRLIK kg/m  
**0.873**



CODE / KOD  
**36C-224-10**

CORNER JOINTS  
KOŞE BAĞLANTILAR



**A CC-105-26.5**



**B LC-122**



**MK-20.1**

DIE-CAST CORNER JOINTS  
PİMLİ BAĞLANTILAR

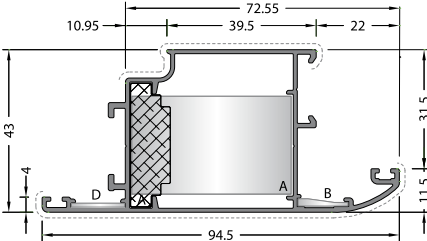


**A LC-4327**



**A LC-3311**

THEORETICAL WEIGHT kg/m  
TEORİK AĞIRLIK kg/m  
**0.889**



CODE / KOD  
**36C-225-10**

CORNER JOINTS  
KOŞE BAĞLANTILAR



**A CC-105-26.5**



**B LC-122**



**MK-20.1**

DIE-CAST CORNER JOINTS  
PİMLİ BAĞLANTILAR

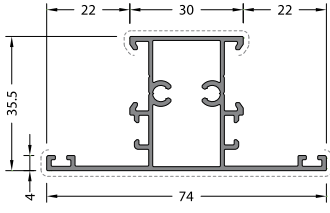


**A LC-4327**



**A LC-3311**

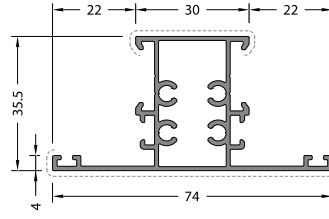
THEORETICAL WEIGHT kg/m  
TEORİK AĞIRLIK kg/m  
**0.889**



CODE / KOD  
**36C-302-10**

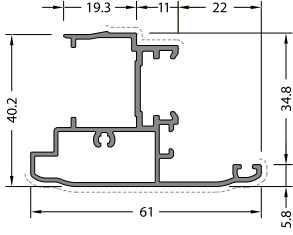
THEORETICAL WEIGHT kg/m  
TEORİK AĞIRLIK kg/m  
**0.740**

\* FOR OUTSIDE OPENING DOOR PROFILES / DIŞA AÇILIR KANALLAR İÇİN.



CODE / KOD  
**36C-303-10**

THEORETICAL WEIGHT kg/m  
TEORİK AĞIRLIK kg/m  
**0.814**



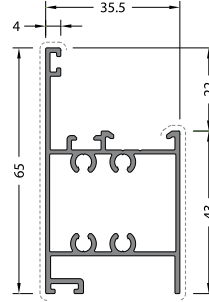
CODE / KOD  
**36C-511-10**

THEORETICAL WEIGHT kg/m  
TEORİK AĞIRLIK kg/m  
**0.705**

ADAPTER CAP  
ADAPTÖR KAPAĞI



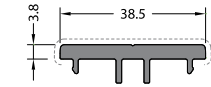
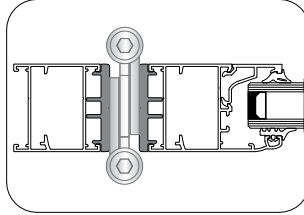
**EM36C-511**



CODE / KOD  
**36C-402-10**

THEORETICAL WEIGHT kg/m  
TEORİK AĞIRLIK kg/m  
**0.795**

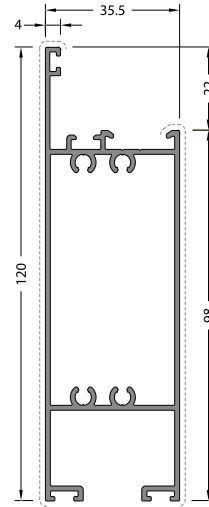
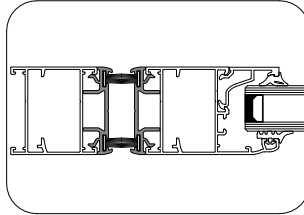
APPLICATION / UYGULAMA



CODE / KOD  
**36C-570-00**

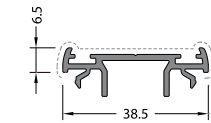
THEORETICAL WEIGHT kg/m  
TEORİK AĞIRLIK kg/m  
**0.472**

APPLICATION / UYGULAMA



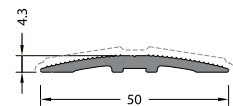
CODE / KOD  
**36C-404-13**

THEORETICAL WEIGHT kg/m  
TEORİK AĞIRLIK kg/m  
**1.307**



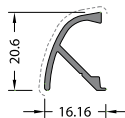
CODE / KOD  
**36C-571-00**

THEORETICAL WEIGHT kg/m  
TEORİK AĞIRLIK kg/m  
**0.329**



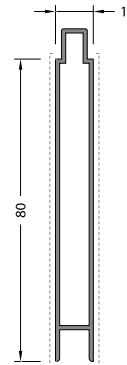
CODE / KOD  
**20-101-00**

THEORETICAL WEIGHT kg/m  
TEORİK AĞIRLIK kg/m  
**0.354**



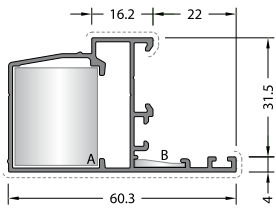
CODE / KOD  
**07-211-00**

THEORETICAL WEIGHT kg/m  
TEORİK AĞIRLIK kg/m  
**0.183**



CODE / KOD  
**07-131-11**

THEORETICAL WEIGHT kg/m  
TEORİK AĞIRLIK kg/m  
**0.568**



CODE / KOD  
**36C-561-10**

THEORETICAL WEIGHT kg/m  
TEORİK AĞIRLIK kg/m  
**0.605**

CORNER JOINTS  
KÖŞE BAĞLANTILAR

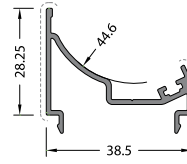


**A CC-103-26.5**



**A LC-2327**

**B LC-122**

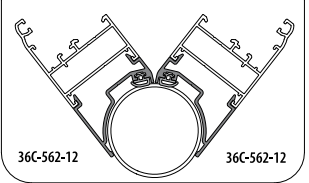


CODE / KOD  
**36C-562-12**

THEORETICAL WEIGHT kg/m  
TEORİK AĞIRLIK kg/m  
**0.379**

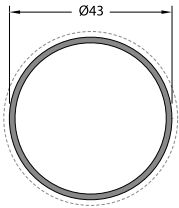
APPLICATION / UYGULAMA

Angle / Açıl **90°~168°**



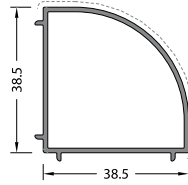
36C-562-12

36C-562-12



CODE / KOD  
**10-127-015**

THEORETICAL WEIGHT kg/m  
TEORİK AĞIRLIK kg/m  
**0.528**

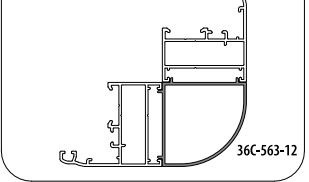


CODE / KOD  
**36C-563-12**

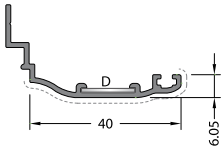
THEORETICAL WEIGHT kg/m  
TEORİK AĞIRLIK kg/m  
**0.467**

APPLICATION / UYGULAMA

Angle / Açıl **90°**



36C-563-12



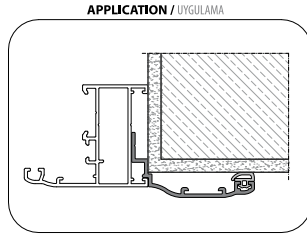
CODE / KOD  
**07-104-00**

THEORETICAL WEIGHT kg/m  
TEORİK AĞIRLIK kg/m  
**0.289**

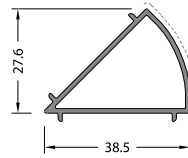
CORNER JOINT  
KÖŞE BAĞLANTI



**MK-20.1**



APPLICATION / UYGULAMA

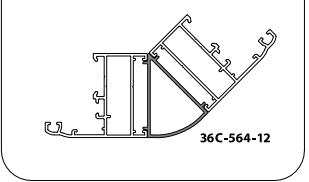


CODE / KOD  
**36C-564-12**

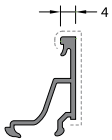
THEORETICAL WEIGHT kg/m  
TEORİK AĞIRLIK kg/m  
**0.361**

APPLICATION / UYGULAMA

Angle / Açıl **45°**

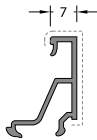


36C-564-12



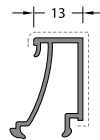
CODE / KOD  
**08-101-00**

THEORETICAL WEIGHT kg/m  
TEORİK AĞIRLIK kg/m  
**0.218**



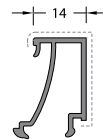
CODE / KOD  
**08-102-00**

THEORETICAL WEIGHT kg/m  
TEORİK AĞIRLIK kg/m  
**0.223**



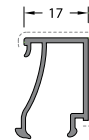
CODE / KOD  
**08-104-00**

THEORETICAL WEIGHT kg/m  
TEORİK AĞIRLIK kg/m  
**0.256**



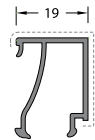
CODE / KOD  
**08-105-00**

THEORETICAL WEIGHT kg/m  
TEORİK AĞIRLIK kg/m  
**0.260**



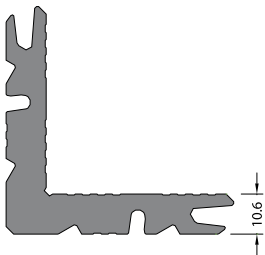
CODE / KOD  
**08-107-00**

THEORETICAL WEIGHT kg/m  
TEORİK AĞIRLIK kg/m  
**0.262**



CODE / KOD  
**08-108-00**

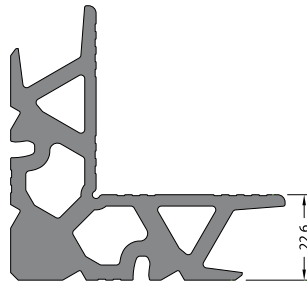
THEORETICAL WEIGHT kg/m  
TEORİK AĞIRLIK kg/m  
**0.270**



No visible surface.  
Görünen yüzeyi yoktur.

CODE / KOD  
**09-101-00**

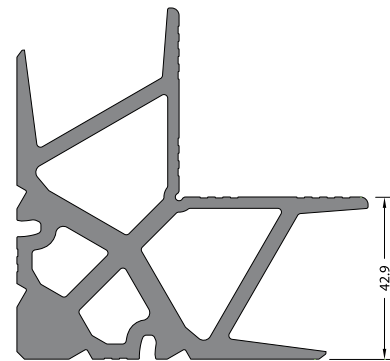
THEORETICAL WEIGHT kg/m  
TEORİK AĞIRLIK kg/m  
**2.561**



No visible surface.  
Görünen yüzeyi yoktur.

CODE / KOD  
**09-103-00**

THEORETICAL WEIGHT kg/m  
TEORİK AĞIRLIK kg/m  
**3.690**



No visible surface.  
Görünen yüzeyi yoktur.

CODE / KOD  
**09-105-00**

THEORETICAL WEIGHT kg/m  
TEORİK AĞIRLIK kg/m  
**5.453**



CORNER JOINTS / KÖŞE BAĞLANTILAR

ACCESSORY CODE AKSESUAR KOD	DRAWING ÇİZİM	APPLICATION PROFILES ÇALIŞTIĞI PROFİL	APPLICATION DETAIL UYGULAMA DETAY
LC-1127		36C-101-10 36C-111-10 36C-121-10 36C-211-10 36C-221-10	
LC-2327		36C-102-10 36C-112-10 36C-122-10 36C-171-10 36C-117-10 36C-109-10 36C-212-10 36C-222-10 36C-561-10	
LC-4327		36C-204-10 36C-214-10 36C-224-10 36C-205-10 36C-215-10 36C-225-10	
LC-3311		All Frames and Sashes Tüm Kasalar ve Kanatlar	
LC-122		All Frames and Sashes and 36C-561-10 Tüm Kasalar ve Kanatlar ve 36C-561-10	
MK-19		All Frames Tüm Kasalar	
MK-20.1		All Sashes and 36C-171-10 Tüm Kanatlar ve 36C-171-10	

PRESS CORNER JOINTS / PRES KÖŞE BAĞLANTILAR

ACCESSORY CODE AKSESUAR KOD	DRAWING ÇİZİM	PROFILE CODE PROFİL KOD	QUANTITY MİKTAR	CUTTING SIZE KESİM ÖLÇÜSÜ	APPLICATION PROFILES ÇALIŞTIĞI PROFİL	APPLICATION DETAIL UYGULAMA DETAY
CC-101-26.5		09-101-00	60 pieces Adet	26.5 mm	36C-101-10 36C-111-10 36C-121-10 36C-211-10 36C-221-10	
CC-103-26.5		09-103-00	50 pieces Adet	26.5 mm	36C-102-10 36C-112-10 36C-122-10 36C-109-10 36C-171-10 36C-117-10 36C-212-10 36C-222-10 36C-561-10	
CC-105-26.5		09-105-00	25 pieces Adet	26.5 mm	36C-204-10 36C-214-10 36C-224-10 36C-205-10 36C-215-10 36C-225-10	

ACCESSORIES / AKSESUARLAR

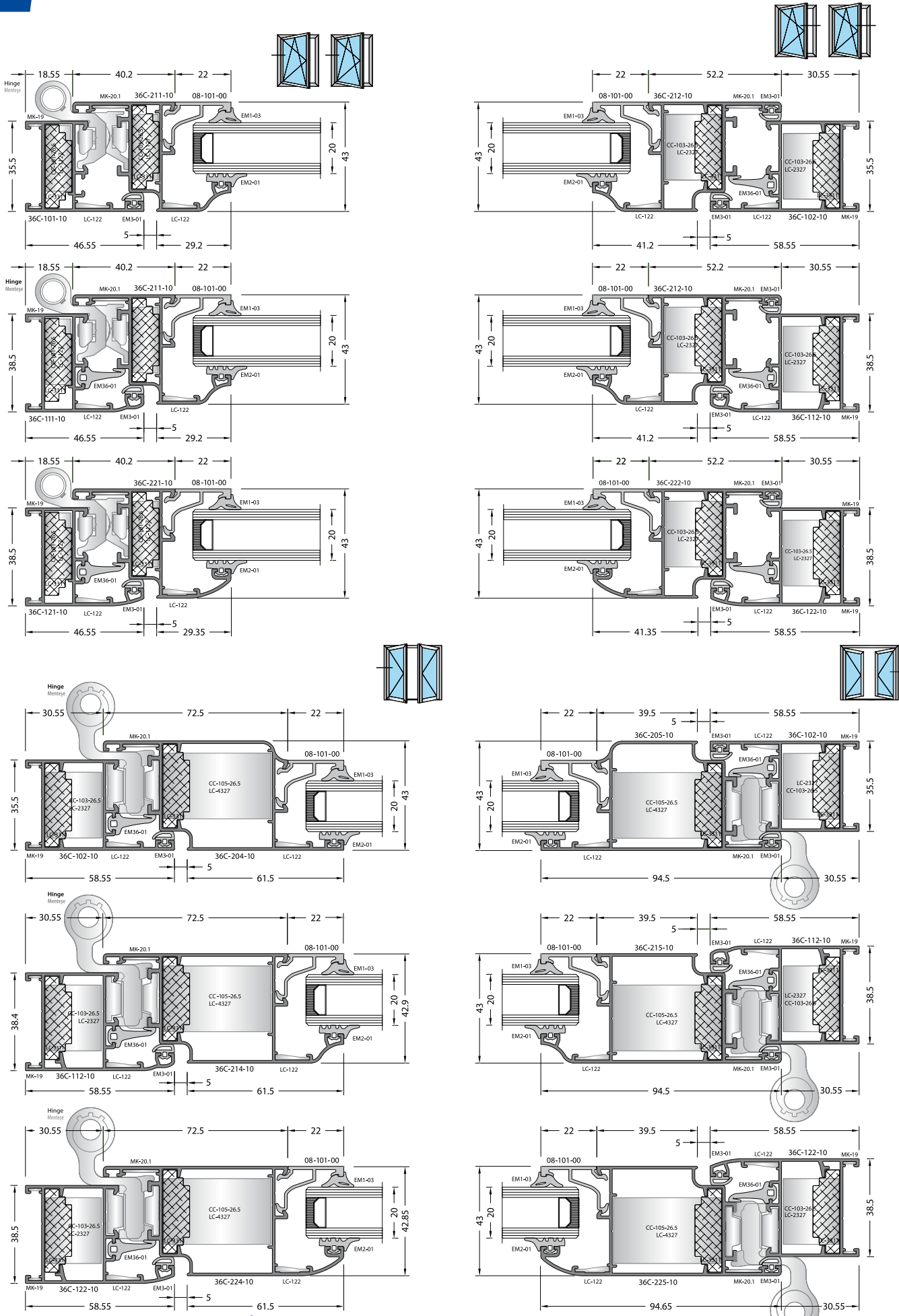
ACCESSORY CODE AKSESUAR KOD	DRAWING ÇİZİM	DESCRIPTION AÇIKLAMA	APPLICATION PROFILES ÇALIŞTIĞI PROFİL	APPLICATION DETAIL UYGULAMA DETAY
EM36C-511		Adapter Cap Adaptör Kapağı	36C-511-10	
EM15-200		Polyamid Rod Profile (Euro Section1) Polyamid Tij Profili (Avrupa Kanal1)	-	
EM10-01 (White/ Beyaz)		Drainage Cap Tahliye Kapağı	-	
EM10-02 (Black/ Siyah)				
EM10-03 (Brown/ Kahverengi)				
EM10-04 (Gray/ Gri)				
EM10-05 (Light Caffee/ Açık Kahve)				

GASKETS / FİTİLLER

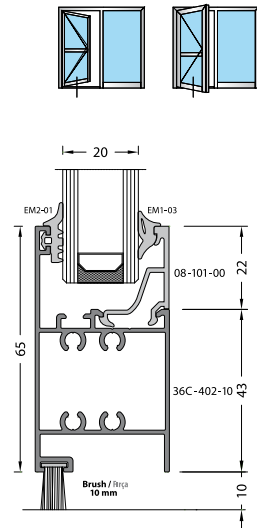
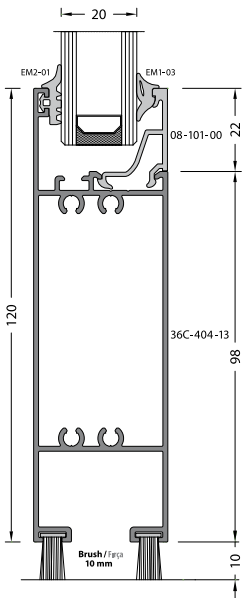
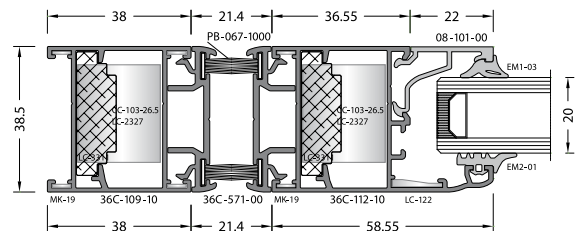
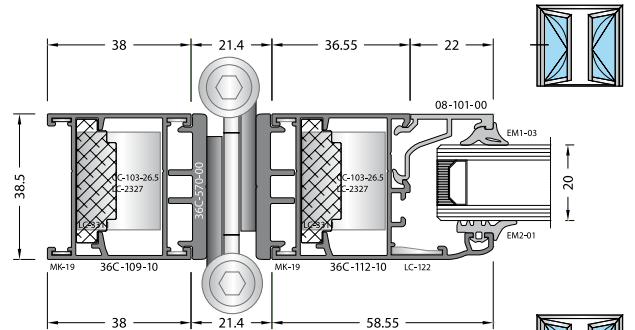
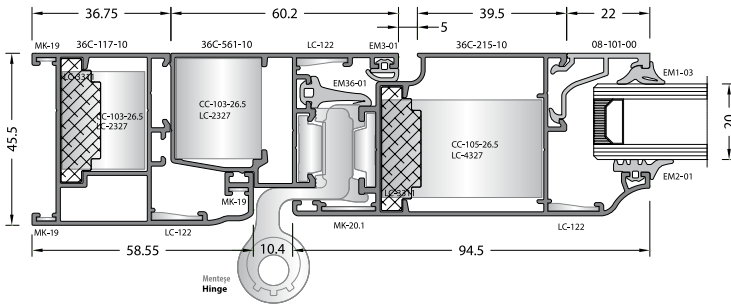
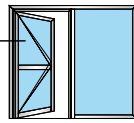
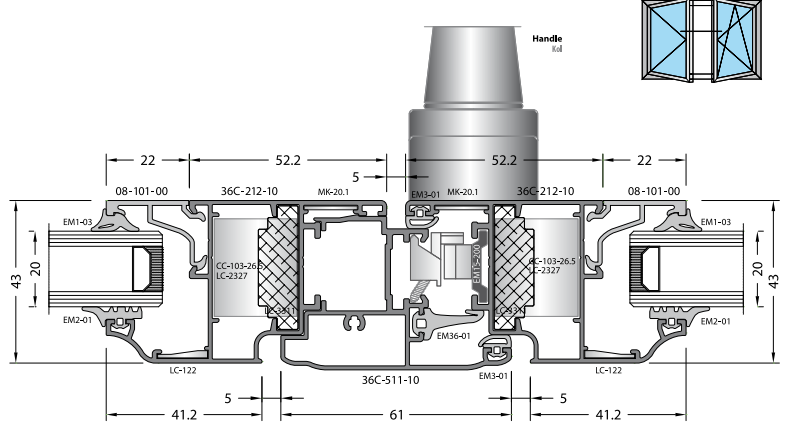
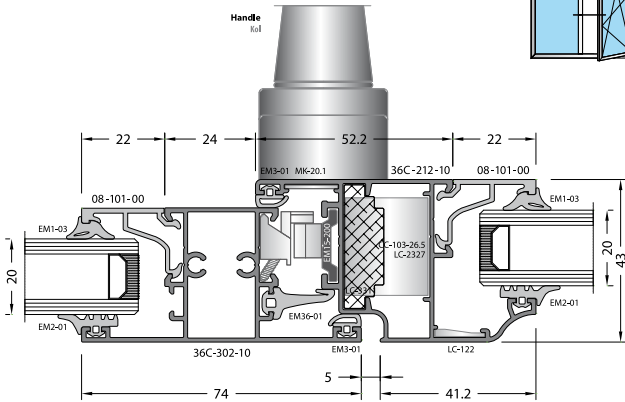
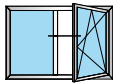
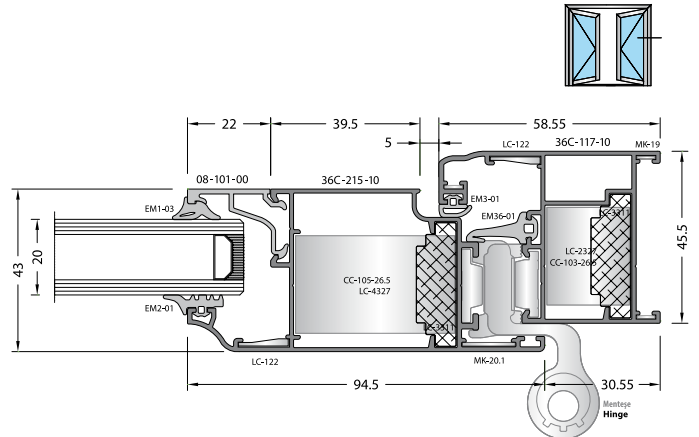
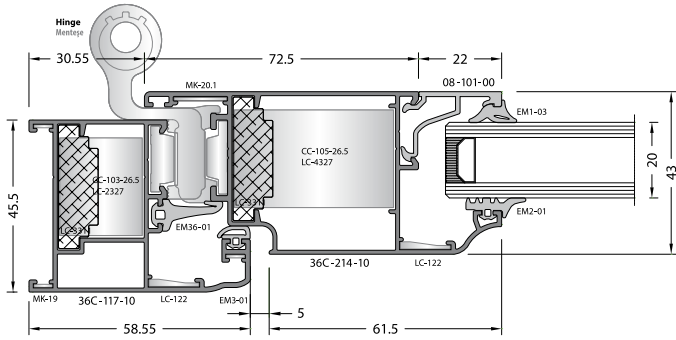
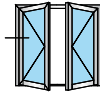
CODE KOD	DRAWING ÇİZİM	APPLICATION UYGULAMA	DESCRIPTION AÇIKLAMA	WEIGHT kg/m AĞIRLIK	PACKAGE QUANTITY PAKET MİKTARI
EM1-02			GLAZING GASKET INSIDE İÇ CAM FİTİLİ (EPDM)	0.050	300 m
EM1-03			GLAZING GASKET INSIDE İÇ CAM FİTİLİ (EPDM)	0.060	250 m
EM1-04			GLAZING GASKET INSIDE İÇ CAM FİTİLİ (EPDM)	0.070	215 m
EM2-01			GLAZING GASKET OUTSIDE DIŞ CAM FİTİLİ (EPDM)	0.052	285 m
EM3-01			ACOUSTICAL GASKET BİNİ FİTİLİ (EPDM)	0.032	465 m
EM36-01			CENTRAL GASKET TOZLUK FİTİLİ (EPDM)	0.090	166 m
PB-067-1000			BRUSH FİRÇA	-	150 m

GLAZING COMBINATIONS / CAM KOMBİNASYONLARI

GLAZING THICKNESS CAM KALINLIĞI	GLAZING GASKET INSIDE İÇ CAM FİTİLİ	GLAZING GASKET OUTSIDE DIŞ CAM FİTİLİ	GLAZING BEAD CAM ÇİTASI
4 mm	EM1-04	EM2-01	08-108-00
5 mm	EM1-03	EM2-01	08-108-00
6 mm	EM1-02	EM2-01	08-108-00
	EM1-04	EM2-01	08-107-00
8 mm	EM1-02	EM2-01	08-107-00
10 mm	EM1-03	EM2-01	08-105-00
	EM1-04	EM2-01	08-104-00
12 mm	EM1-02	EM2-01	08-104-00
17 mm	EM1-03	EM2-01	08-102-00
20 mm	EM1-03	EM2-01	08-101-00







Produced by 

