

EDITION / VERSİYON

01/2019

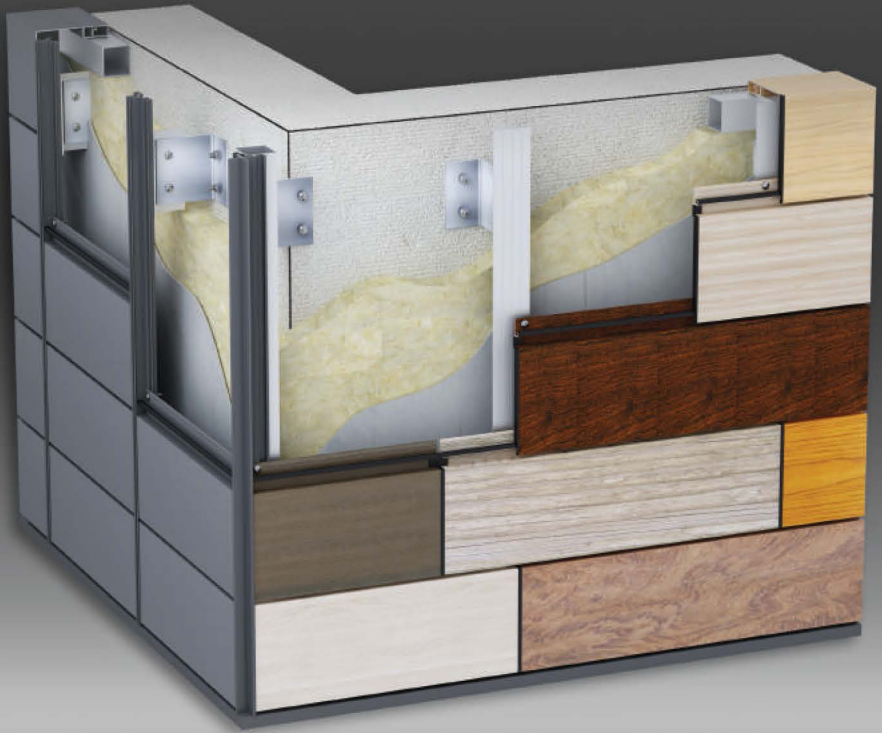
UPDATE / GÜNCELLEME

02/2023



COTTAL®

Aluminium Cladding System



KURTOĞLU®
ALUMINIUM

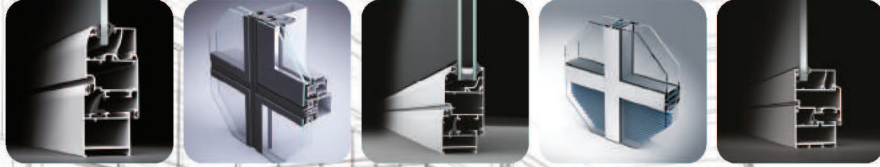




www.kurtoglu.com



'KURTOĞLU ALÜMİNYUM SİSTEMLERİ,
MİMARİ PROJELERİNİZE ESTETİK ÇÖZÜMLER SUNAR.'





COMPANY INFORMATION

FİRMAMIZ HAKKINDA

Our company started its operations with copper and lead casting in the 1960s, and in 1980, we started to serve in the Aluminium Sector with aluminium extrusion press that has 1200 ton capacity. KURTOĞLU Aluminium is located in Corlu, approximately 100 km away from Istanbul and operates in 31.000 m2 indoor area. With our latest investments, our company has become a modern integrated facility.

- Annual production capacity ~ 34.000 tons,
- Approximately ~ 500 qualified employees,
- ISO 9001:2015 Quality System.
- Qualicoat Seaside Certificate,
- Qualanod Certificate,
- CE Certificate

The main production features of our Company are described as follows:

- Molding Room (Wire Erosion, Treatment Center),
- Aluminium Extrusion Presses, (800 tons, 1460 tons, 1880 tons, 1460/1880 tons, 2100 tons and 2600 tons),
- Anodic Oxidation Facility (75.000 amps - 412.500 m2 / month)
- Electrostatic Powder Paint Facility (750.000 m2 / month)
- Mechanical Processing Section (CNC Treatment Center)

Kurtoğlu Alüminyum exports its products to; U.S. America, New York, Los Angeles, San Francisco, Switzerland, Germany, Austria, Belgium, Sweden, Albania, England, Greece, Bulgaria, Cyprus, Serbia, Montenegro, Hungary, Georgia, Croatia, Turkmenistan, Kyrgyzstan, Azerbaijan, Moldova, Ukraine, Macedonia, Kosovo, Romania, Belarus, Czech Republic, Libya, Iraq, Algeria, Tunisia, Qatar, Nigeria, Israel, Ghana, Gabon, France, India, Saudi Arabia, Burkina Faso, Ethiopia, Egypt, Ivory Coast, Morocco, Poland, The Netherlands, Russia, Madagascar, Niger, Tanzania, Mozambique, Norway, Lebanon, Mayotte, Palestine, Senegal, Somali, Benin, Canada, Panama.

KURTOĞLU ALUMINIUM continues to operate based on the principle of providing services to its customers with zero fault.

Şirketimiz 1960' lı yıllarda Bakır ve Kurşun ile üretim hayatına başlamıştır. 1980 yılında 1200 tonluk Alüminyum Ekstrüzyon presi ile üretim sektörüne girmiştir.

KURTOĞLU Alüminyum; İstanbul'a yaklaşık 100 km mesafede Çorlu'da bulunmaktadır. 31.000 m² kapalı alanda faaliyetini sürdürmektedir. Son yapılan yatırımlarla şirketimiz modern bir entegre tesis haline ulaşmıştır.

- Yıllık kapasite ~ 34.000 ton,
- Yaklaşık ~ 500 kalifiye eleman,
- ISO 9001:2015 kalite sistemi,
- Qualicoat Seaside Belgesi,
- Qualanod Belgesi,
- CE Belgesi,

Şirketimizin ana özellikleri aşağıda da belirtilmiştir:

- Kalıphane Bölümü (Tel erozyon, İşleme Merkezi)
- Alüminyum Ekstrüzyon Presleri; (800 ton, 1460 ton, 1880 ton, 1460/1880 ton, 2100 ton ve 2600 ton),
- Elokso Tesisi (75.000 Amper - 412.500 m² / Ay)
- Elektrostatik Toz Boya Tesisi (750.000 m² / Ay)
- Mekanik İşlem Bölümü (CNC İşleme Merkezi)

KURTOĞLU Alüminyum Ürünleri; Amerika, New York, Los Angeles, San Francisco, İsviçre, Almanya, Avusturya, Belçika, İsveç, Arnavutluk, İngiltere , Yunanistan, Bulgaristan, Kıbrıs, Sırbistan, Karadağ, Macaristan, Gürcistan, Hırvatistan, Türkmenistan, Kırgızistan, Azerbaycan, Moldova, Ukrayna, Makedonya, Kosova, Romanya, Beyaz Rusya, Çek Cumhuriyeti, Libya, Irak, Cezayir, Tunus, Katar, Nijerya, İsrail, Gana, Gabon, Fransa, Hindistan, Suudi Arabistan, Burkina Faso, Etiyopya, Mısır, Fil Dişi Sahili, Fas, Polonya, Hollanda, Rusya Federasyonu, Madagaskar, Nijer, Tanzania, Mozambik, Norveç, Lübnan, Mayotte, Filistin, Senegal, Somali, Benin, Kanada, Panama' ya ihraç edilmektedir.

KURTOĞLU ALÜMİNYUM müşterilerine sıfır hata ile hizmet vermeyi temel alarak çalışmalarını sürdürmektedir.

'The countries of export; İhracat yapılan ülkeler'



Kurtoğlu Aluminium countries of export / İhracat yapılan ülkeler.

- U.S. America / Amerika
- New York
- Los Angeles
- San Francisco
- Switzerland / İsviçre
- Germany / Almanya
- Austria / Avusturya
- Belgium / Belçika
- Sweden / İsveç
- Albania / Arnavutluk
- England / İngiltere
- Greece / Yunanistan
- Bulgaria / Bulgaristan
- Cyprus / Kıbrıs
- Serbia / Sırbistan
- Montenegro / Karadağ
- Hungary / Macaristan
- Georgia / Gürcistan
- Croatia / Hırvatistan
- Turkmenistan / Türkmenistan
- Kyrgyzstan / Kırgızistan
- Azerbaijan / Azerbaycan
- Moldova / Moldova
- Ukraine / Ukrayna
- Macedonia / Makedonya
- Kosovo
- Romania / Romanya
- Belarus / Beyaz Rusya
- Czech Republic / Çek Cumhuriyeti
- Libya / Libya
- Iraq / Irak
- Algeria / Cezair
- Tunisia / Tunus
- Qatar / Katar
- Nigeria / Nijerya
- Israel / İsrail
- Ghana / Gana
- Gabon / Gabon
- France / Fransa
- India / Hindistan
- Saudi Arabia / Suudi Arabistan
- Burkina Faso / Burkina Faso
- Ethiopia / Etiyopya
- Egypt / Mısır
- Ivory Coast / Fil Dişi Sahili
- Morocco / Fas
- Poland / Polonya
- The Netherlands / Hollanda
- Russia / Rusya
- Madagascar / Madagaskar
- Niger / Nijer
- Tanzania / Tanzanya
- Mozambique / Mozambik
- Benin
- Palestine / Filistin
- Canada / Kanada
- Lebanon / Lübnan
- Mayotte / Mayotte
- Norway / Norveç
- Panama
- Senegal / Senegal
- Somali



KURTOĞLU®
ALUMINIUM





QUALITY POLICY

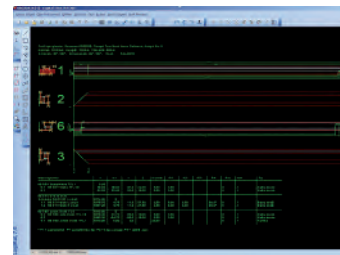
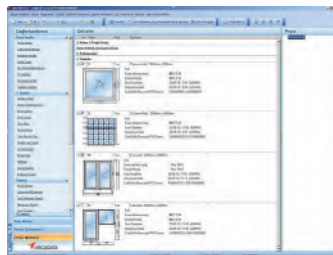
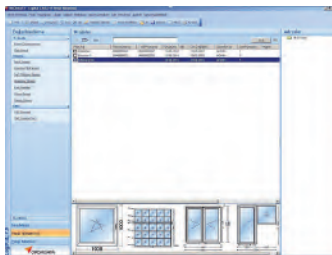
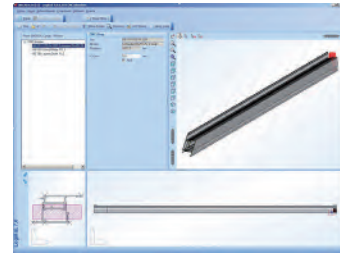
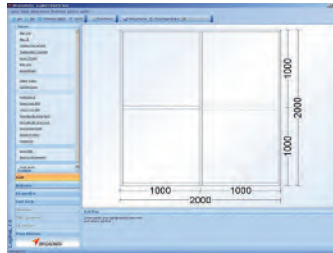
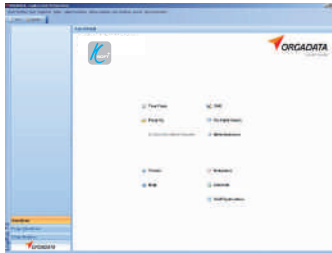
KALİTE POLİTİKASI

The company's quality policy is based upon the pillars of product quality, state of the art technology, customer satisfaction, training, environmental awareness, and continuous development. Kurtoğlu always implements this policy in all of its operations and units.

Şirketin kalite politikası ürün kalitesine, yeni teknolojilere, müşteri memnuniyetine, eğitime, çevre duyarlılığına ve sürekli gelişime dayanır. Kurtoğlu, her zaman tüm faaliyet ve birimlerinde bu politikayı uygular.

ORGADATA SOFTWARE & SOLUTION PARTNER

The conversational software Ksoft® matches perfectly with the requirements of all aluminum windows, door and curtain wall systems configuration, functionality and menu navigation. Ksoft® is a complete service package for architectural profile applications, and features all you need in the metal-processing operations with tremendous speed and perfection.



ORGADATA YAZILIM VE ÇÖZÜM ORTAĞI

İletişimli Ksoft® yazılımı tüm alüminyum pencereler , kapı ve cephe sistemleri konfigürasyon, fonksiyonel ve menü navigasyonu ile ilgili ihtiyaçları karşılar. Ksoft® yazılım programı mimari profil uygulaması ve metal işinde gerekli özellikleri optimum hız ve olağanüstü sunan tam bir program paketidir.

COTTAL

STANDARD APPLICATION

- Application of Lamels, with equal length between axials.

UNIQUE APPLICATION NEW

- Using each Lamel within itself with different joints and length.
- Possibility of having application of staggered joints, due to unique Lamel length without need to axials.
- Open to different architectural designs due to unique form.
- Coping, canopy and detail finishing options in the form of lamel.
- Application for unlimited interior and exterior point of view.
- Due to use of EPDM injection gaskets in the shape of Lamel in between joints at unique applications absorbs expansion of Lamel by increasing impermeability of joinings of the facade.
- Provide Practical application and aesthetic view.



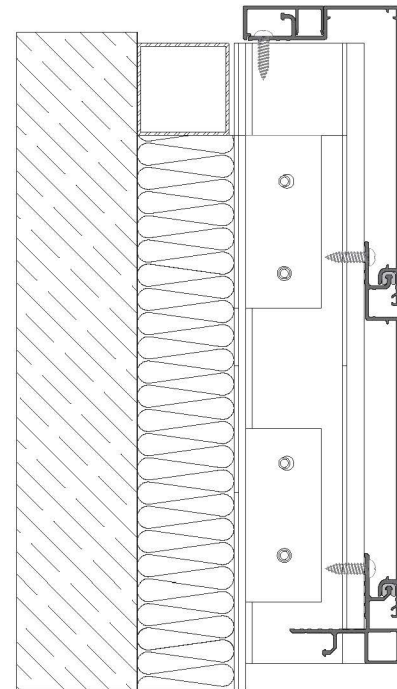
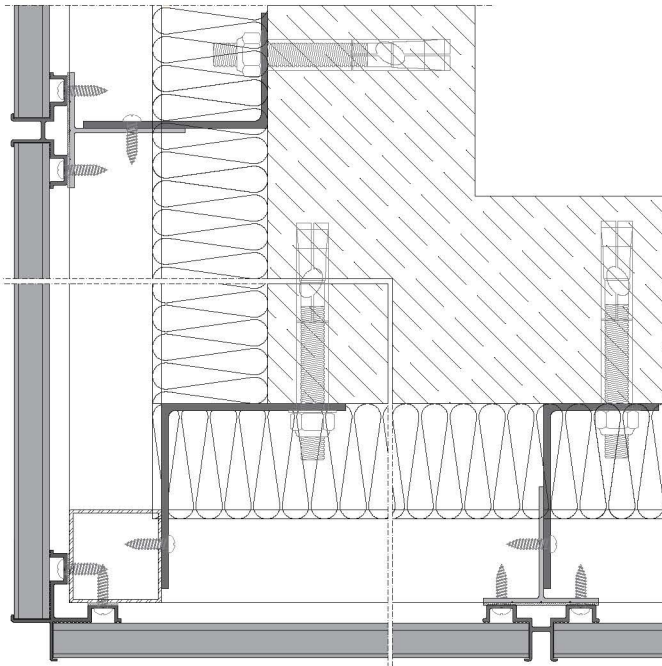
COTTAL

STANDART UYGULAMA

- Aks arası eşit boylarda lamellerin uygulanması,

ÖZGÜN UYGULAMA YENİ

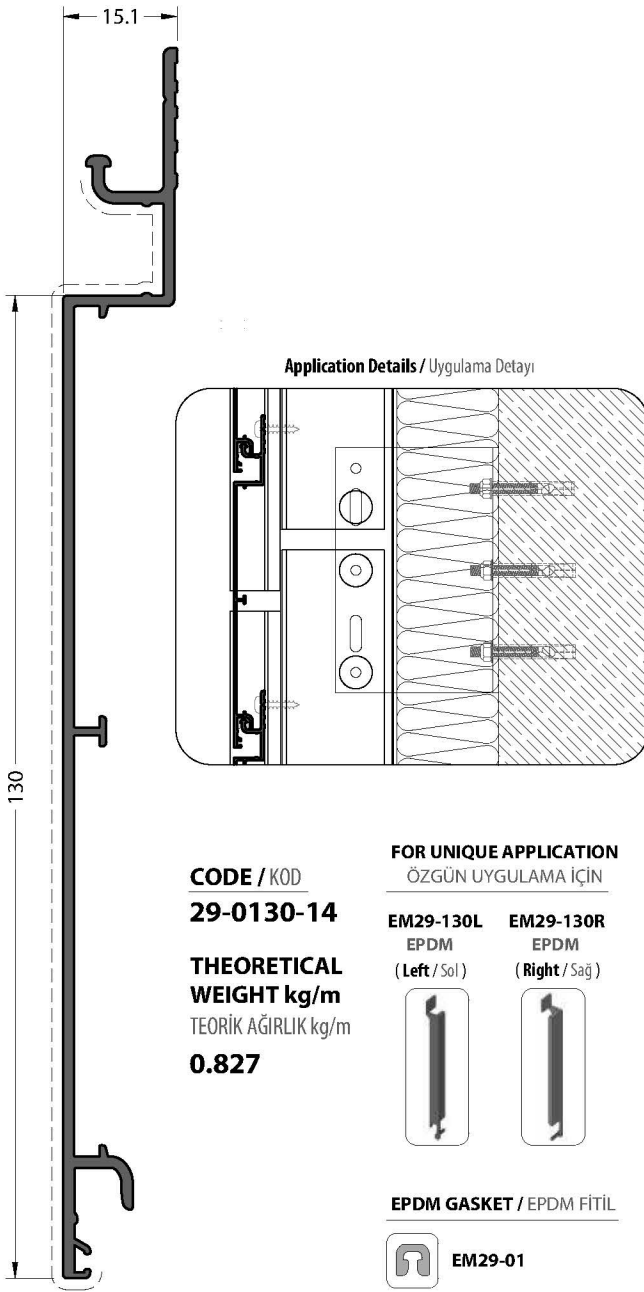
- Her lamel kendi içerisinde farklı derzlerde ve boyutlarda kullanılabilir. Her lamel kendi içerisinde farklı derzlerde ve boyutlarda kullanılabilir.
- Akslara bağlı kalmadan özgün lamel boyu sayesinde, şaşırtmalı derz uygulama imkanı sunar.
- Özgün yapısı itibarıyla farklı mimari tasarımlara açık olması,
- Lamel formunda harpuşta, saçak ve bitiş detay seçenekleri,
- Sınırsız iç ve dış açılarda uygulanabilmesi,
- Özgün uygulamalarda derzler arasında kullanılan lamel formunda epdm enjeksiyon fitil sayesinde kaplanılan cephenin birleşimindeki sızdırmazlığını artırırp lamel genişmesini abzorve eder.
- Pratik uygulama ve estetik görünüm sağlar.



Aluminium Cladding System

COTTAL

PROFILES / PROFILLER

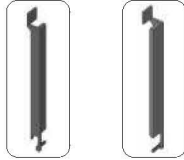


CODE / KOD
29-0130-14

THEORETICAL WEIGHT kg/m
TEORİK AĞIRLIK kg/m
0.827

FOR UNIQUE APPLICATION
ÖZGÜN UYGULAMA İÇİN

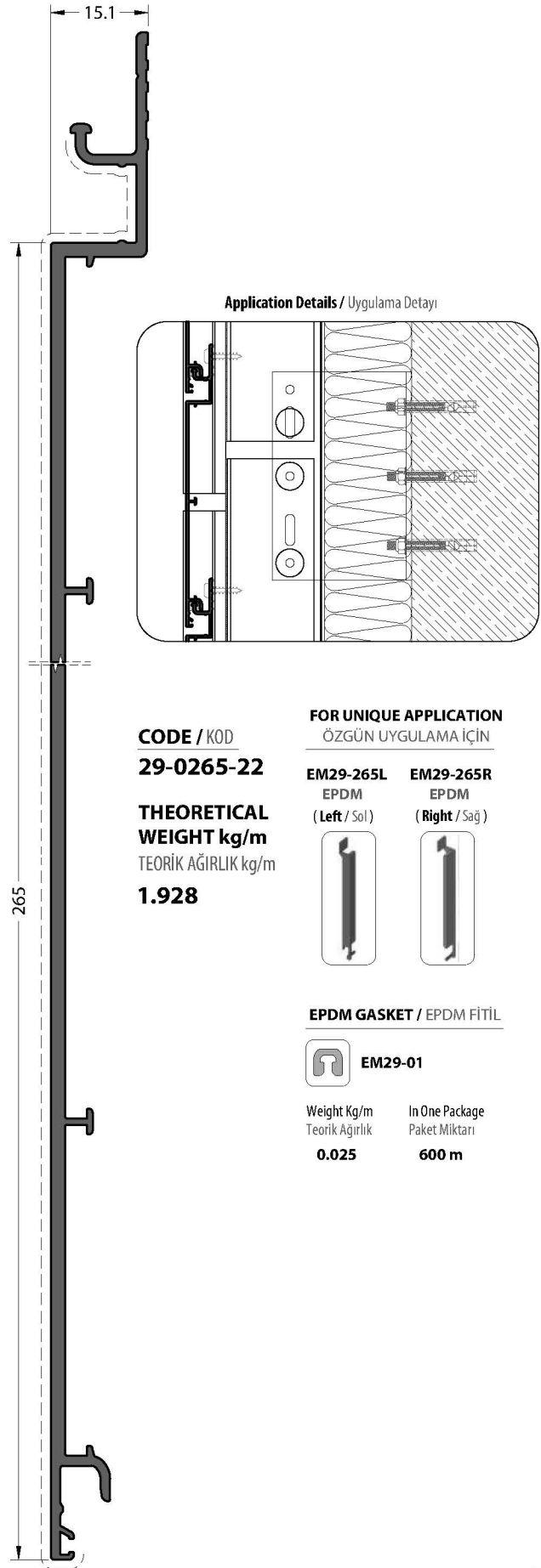
EM29-130L **EM29-130R**
EPDM EPDM
(Left / Sol) (Right / Sağ)



EPDM GASKET / EPDM FİTİL



EM29-01
Weight Kg/m In One Package
Teorik Ağırlık Paket Miktarı
0.025 600 m

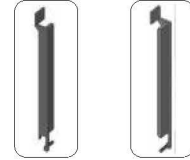


CODE / KOD
29-0265-22

THEORETICAL WEIGHT kg/m
TEORİK AĞIRLIK kg/m
1.928

FOR UNIQUE APPLICATION
ÖZGÜN UYGULAMA İÇİN

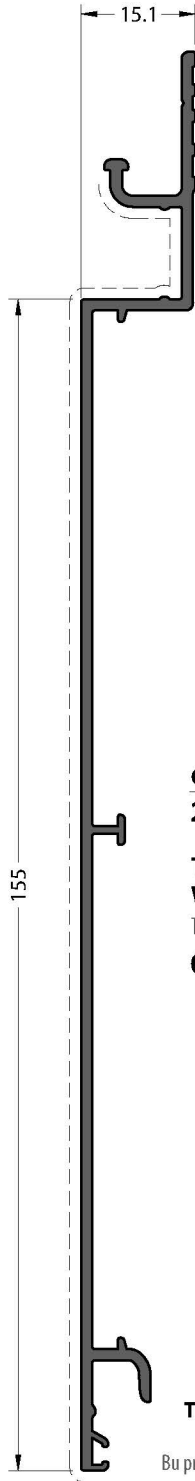
EM29-265L **EM29-265R**
EPDM EPDM
(Left / Sol) (Right / Sağ)



EPDM GASKET / EPDM FİTİL

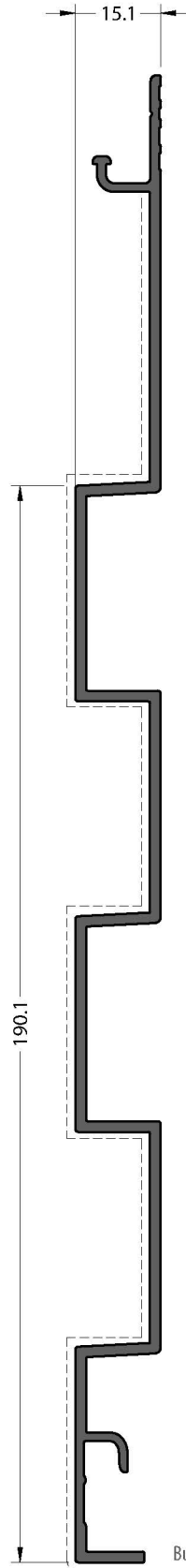


EM29-01
Weight Kg/m In One Package
Teorik Ağırlık Paket Miktarı
0.025 600 m



CODE / KOD
29-0155-15
THEORETICAL
WEIGHT kg/m
TEORİK AĞIRLIK kg/m
0.967

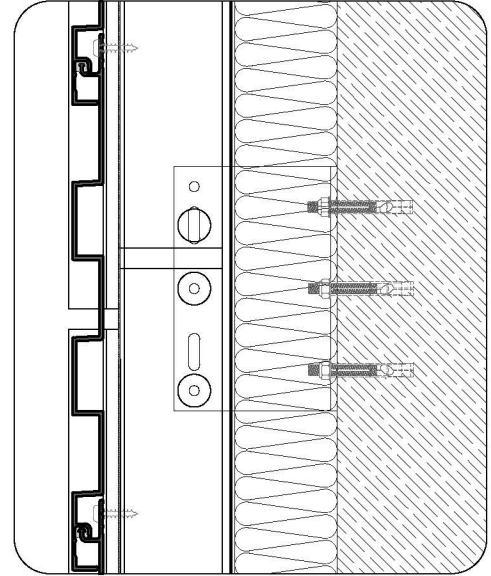
**This profile is not suitable
for unic application.**
Bu profil özgün uygulamaya uygun değildir.



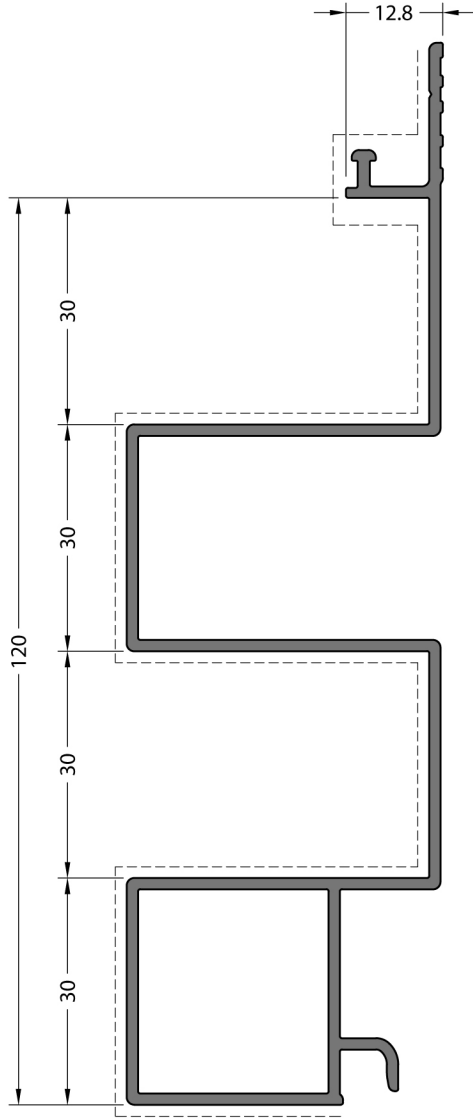
CODE / KOD
29-0228-19
THEORETICAL
WEIGHT kg/m
TEORİK AĞIRLIK kg/m
1.802

**This profile is not suitable
for unic application.**
Bu profil özgün uygulamaya uygun değildir.

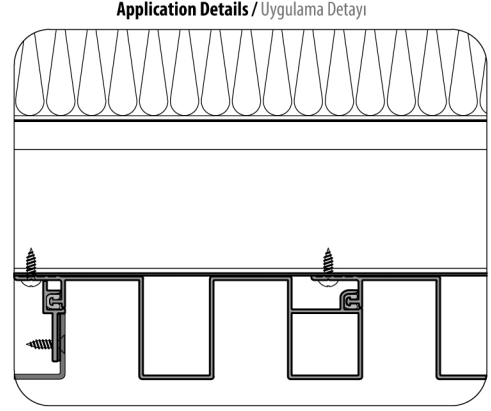
Application Details / Uygulama Detayı



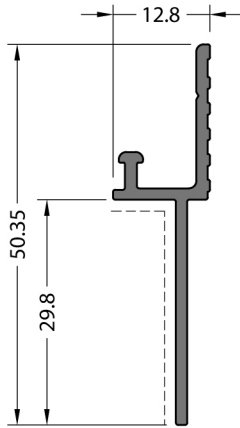
No scaled / Ölçeksiz



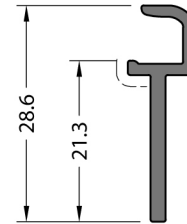
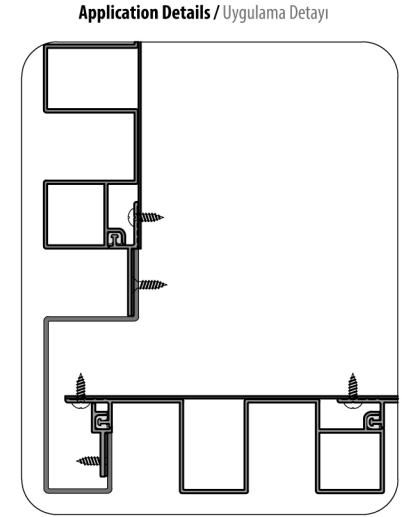
CODE / KOD
29-0229-15
THEORETICAL WEIGHT kg/m
 TEORİK AĞIRLIK kg/m
1.394



This profile is not suitable for unic application.
 Bu profil özgün uygulamaya uygun değildir.

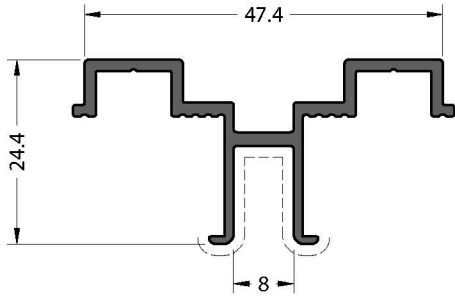


CODE / KOD
29-3229-00
THEORETICAL WEIGHT kg/m
 TEORİK AĞIRLIK kg/m
0.280



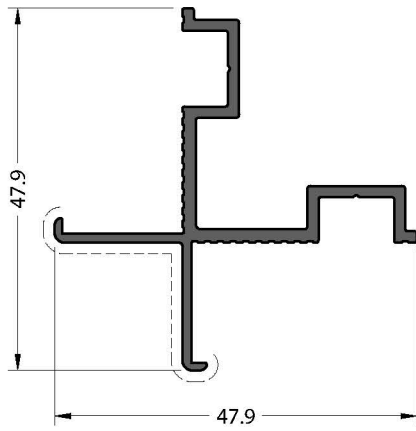
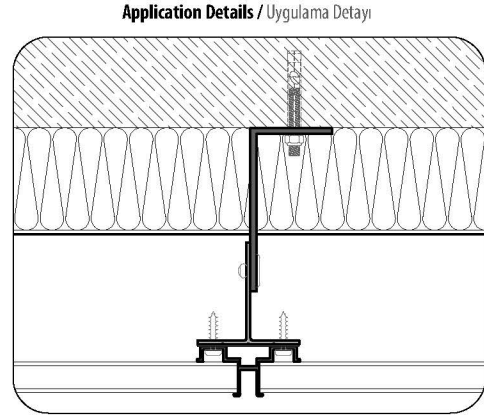
CODE / KOD
29-3230-00
THEORETICAL WEIGHT kg/m
 TEORİK AĞIRLIK kg/m
0.189

PROFILES / PROFİLLER



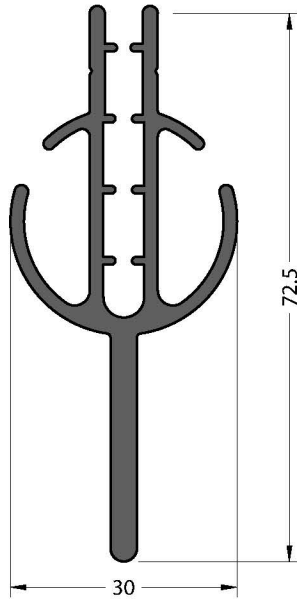
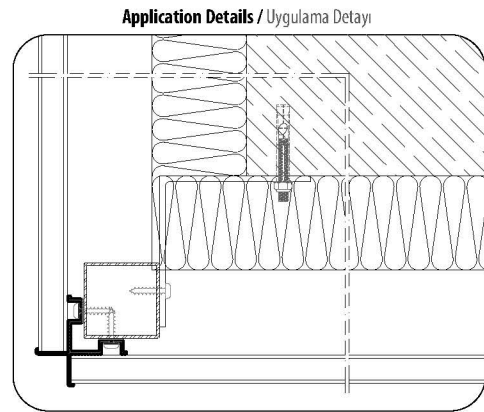
CODE / KOD
29-1001-00

**THEORETICAL
WEIGHT kg/m**
TEORİK AĞIRLIK kg/m
0.431



CODE / KOD
29-2001-00

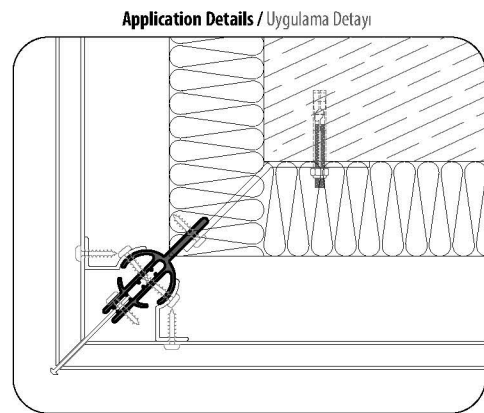
**THEORETICAL
WEIGHT kg/m**
TEORİK AĞIRLIK kg/m
0.473



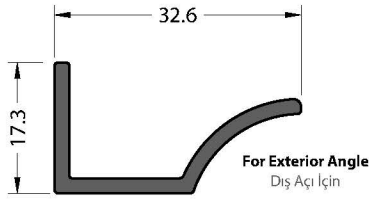
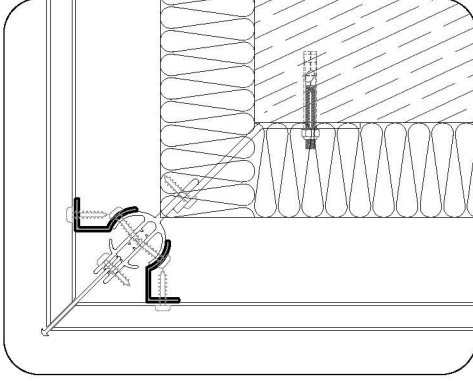
Mill Finish / Pres
No visible surface. / Görünen yüzeyi yoktur.

CODE / KOD
29-2011-00

**THEORETICAL
WEIGHT kg/m**
TEORİK AĞIRLIK kg/m
1.074



Application Details / Uygulama Detayı

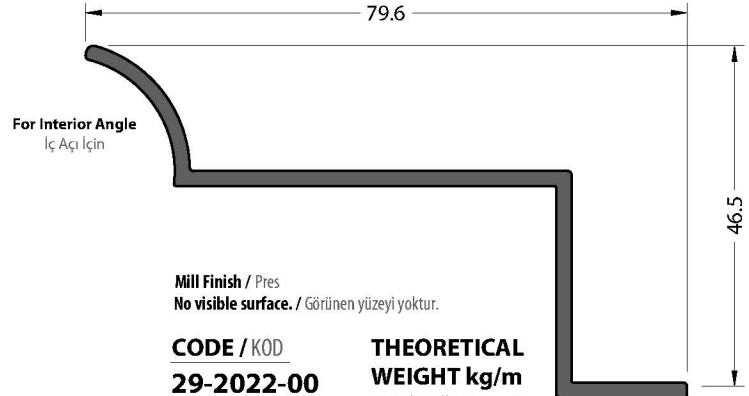
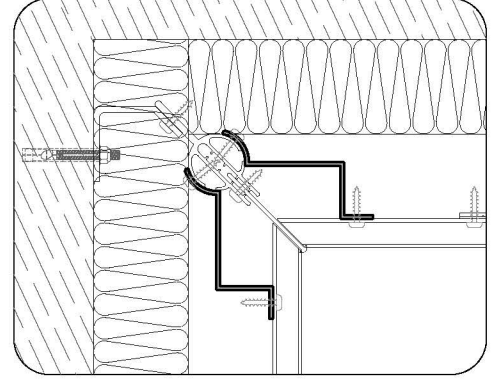


Mill Finish / Pres
No visible surface. / Görünen yüzeyi yoktur.

CODE / KOD
29-2021-00

THEORETICAL
WEIGHT kg/m
TEORİK AĞIRLIK kg/m
0.282

Application Details / Uygulama Detayı

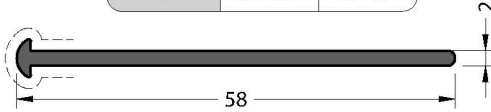


Mill Finish / Pres
No visible surface. / Görünen yüzeyi yoktur.

CODE / KOD
29-2022-00

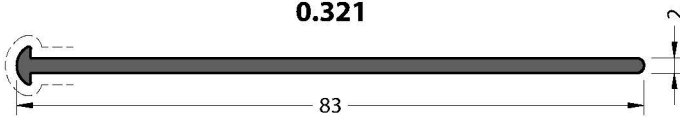
THEORETICAL
WEIGHT kg/m
TEORİK AĞIRLIK kg/m
0.635

PROFILE CODE PROFİL KOD	INTERIOR ANGLE İÇ AÇI	EXTERIOR ANGLE DIŞ AÇI
29-2058-00	85° - 180°	85° - 180°
29-2083-00	60° - 85°	60° - 85°
29-2107-00	50° - 60°	53° - 60°



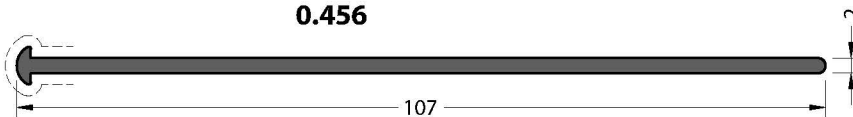
CODE / KOD
29-2058-00

THEORETICAL
WEIGHT kg/m
TEORİK AĞIRLIK kg/m
0.321



CODE / KOD
29-2083-00

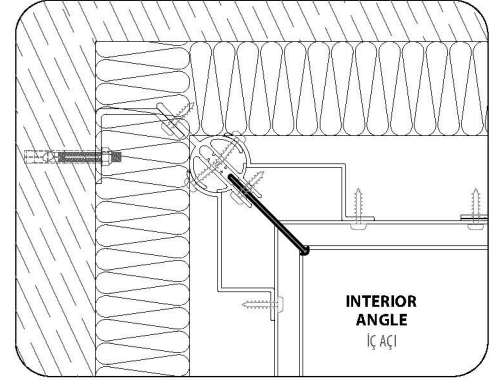
THEORETICAL
WEIGHT kg/m
TEORİK AĞIRLIK kg/m
0.456



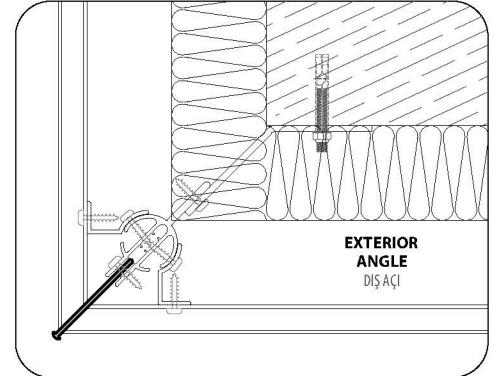
CODE / KOD
29-2107-00

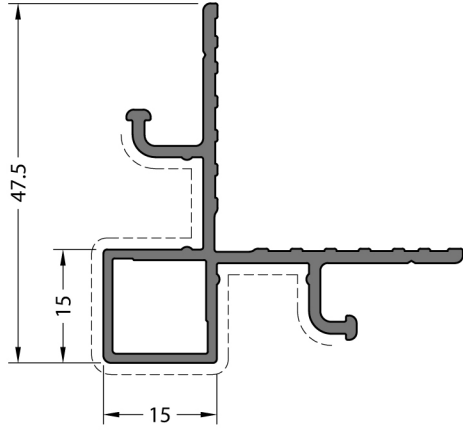
THEORETICAL
WEIGHT kg/m
TEORİK AĞIRLIK kg/m
0.586

Application Details / Uygulama Detayı



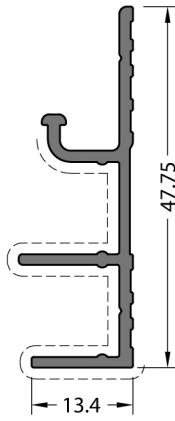
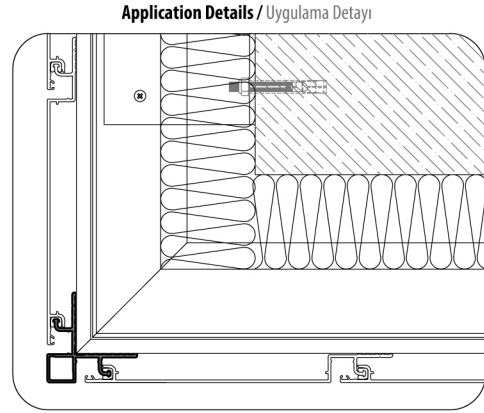
Application Details / Uygulama Detayı





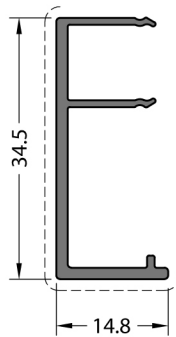
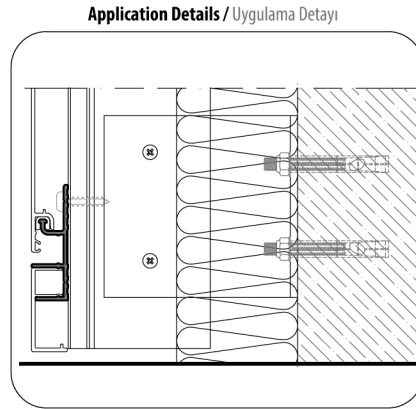
CODE / KOD
29-3001-00

THEORETICAL WEIGHT kg/m
TEORİK AĞIRLIK kg/m
0.606



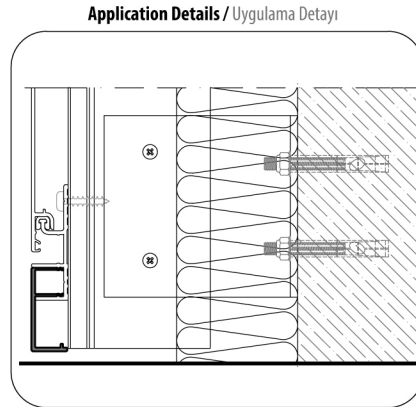
CODE / KOD
29-3002-00

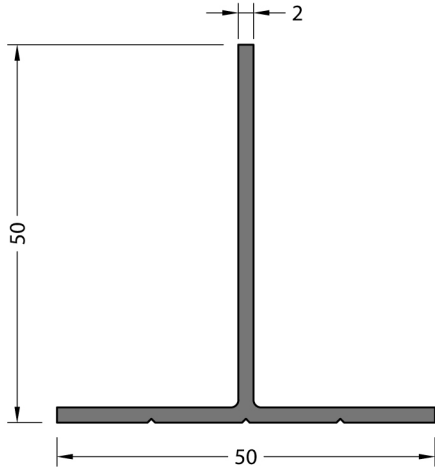
THEORETICAL WEIGHT kg/m
TEORİK AĞIRLIK kg/m
0.359



CODE / KOD
29-4001-00

THEORETICAL WEIGHT kg/m
TEORİK AĞIRLIK kg/m
0.252



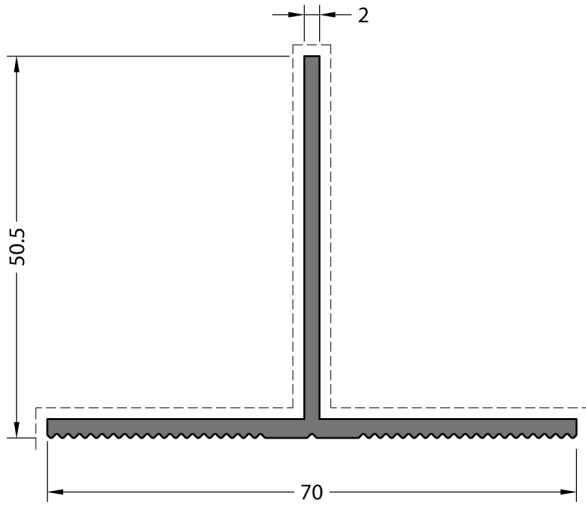
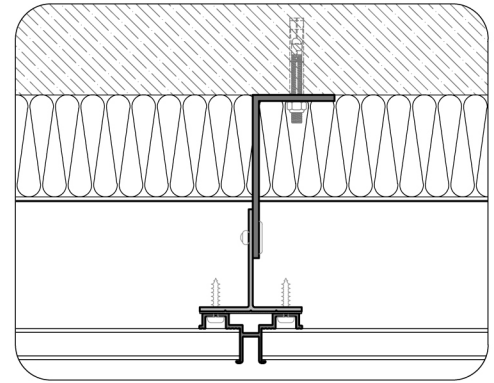


No visible surface.
Görünen yüzeyi yoktur.

CODE / KOD
16-104-020

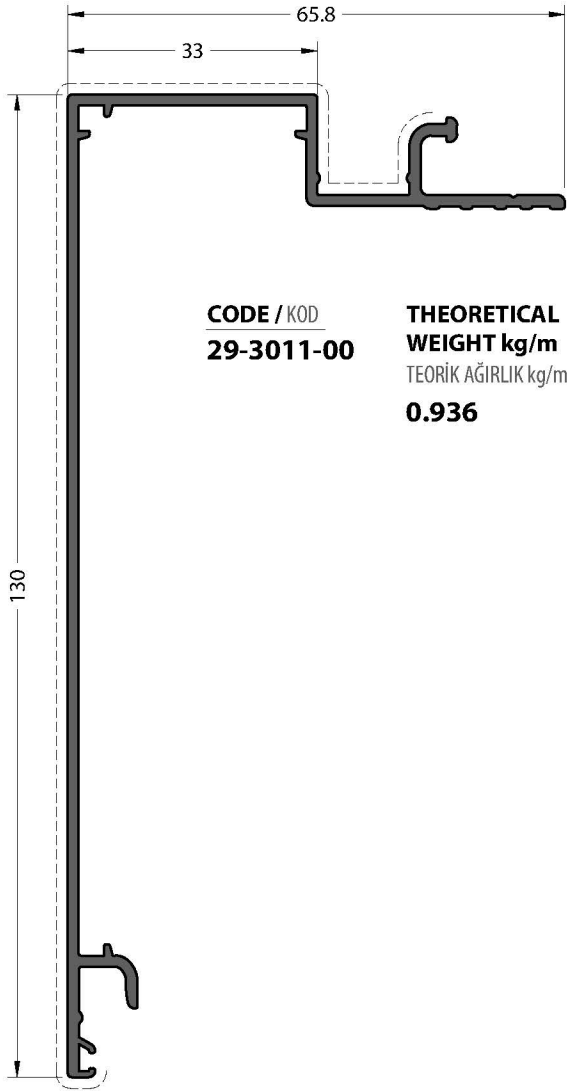
THEORETICAL WEIGHT kg/m
TEORİK AĞIRLIK kg/m
0.528

Application Details / Uygulama Detayı



CODE / KOD
12051

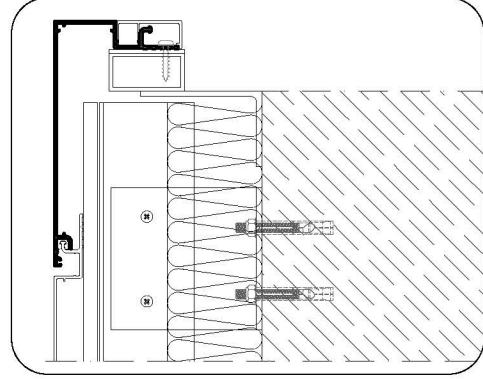
THEORETICAL WEIGHT kg/m
TEORİK AĞIRLIK kg/m
0.692



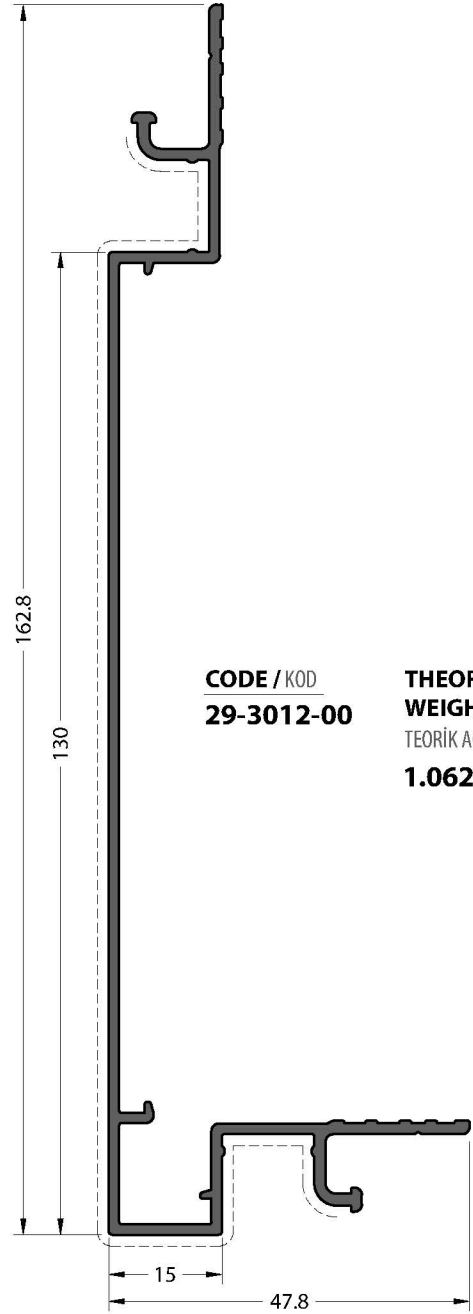
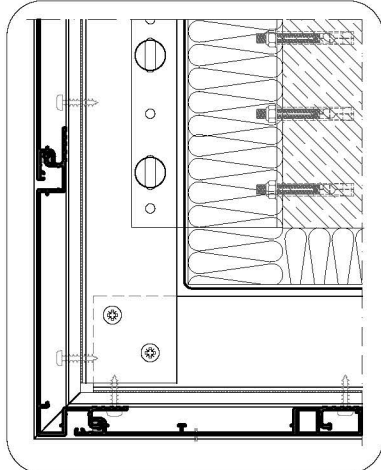
CODE / KOD
29-3011-00

THEORETICAL WEIGHT kg/m
TEORİK AĞIRLIK kg/m
0.936

Application Details / Uygulama Detayı

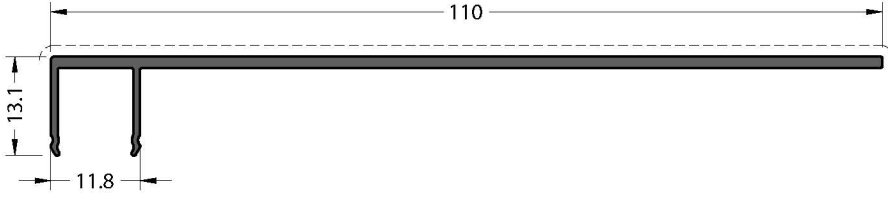


Application Details / Uygulama Detayı



CODE / KOD
29-3012-00

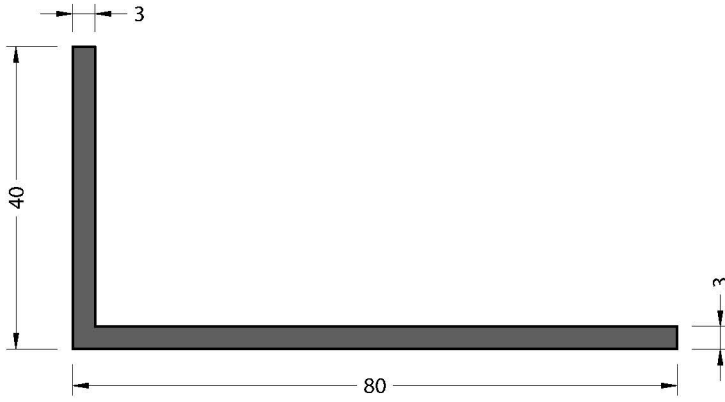
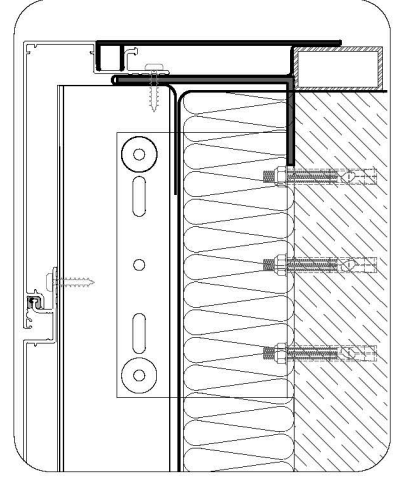
THEORETICAL WEIGHT kg/m
TEORİK AĞIRLIK kg/m
1.062



CODE / KOD
29-4002-00

THEORETICAL WEIGHT kg/m
TEORİK AĞIRLIK kg/m
0.500

Application Details / Uygulama Detayı

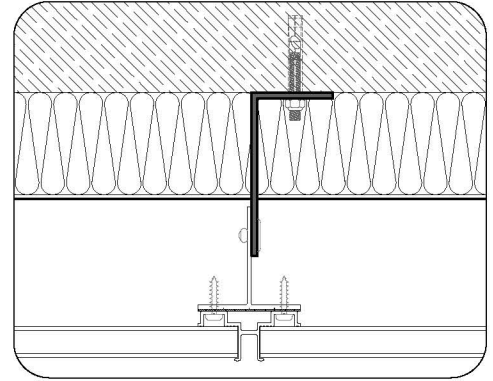


No visible surface.
Görünen yüzeyi yoktur.

CODE / KOD
14-122-030

THEORETICAL WEIGHT kg/m
TEORİK AĞIRLIK kg/m
0.948

Application Details / Uygulama Detayı

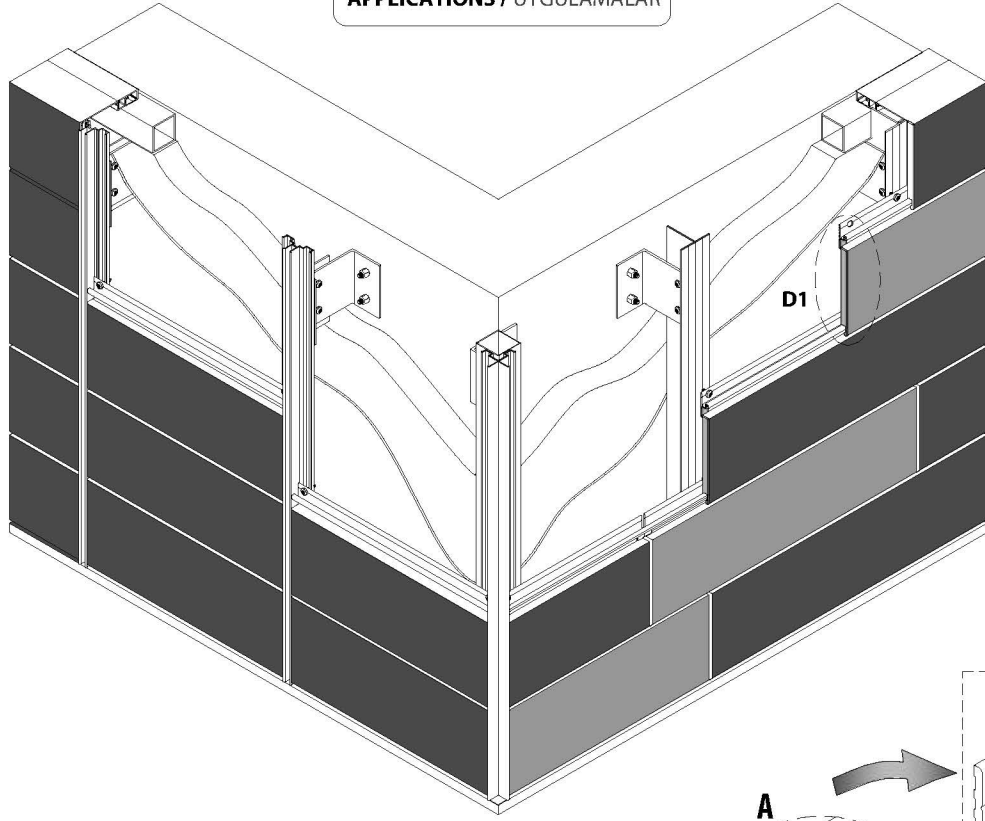


Aluminium Cladding System

COTTAL

DETAILS / DETAYLAR

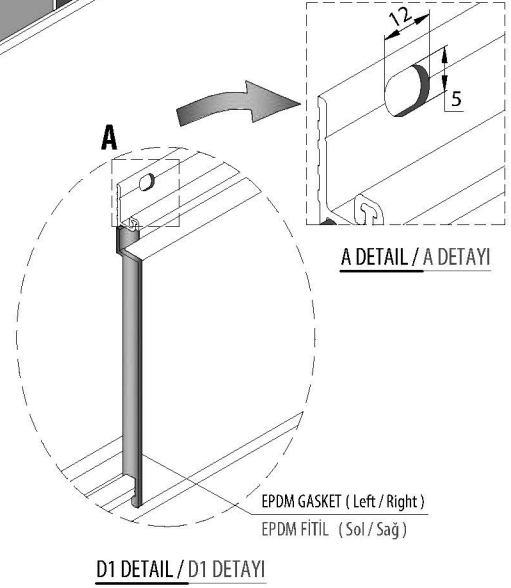
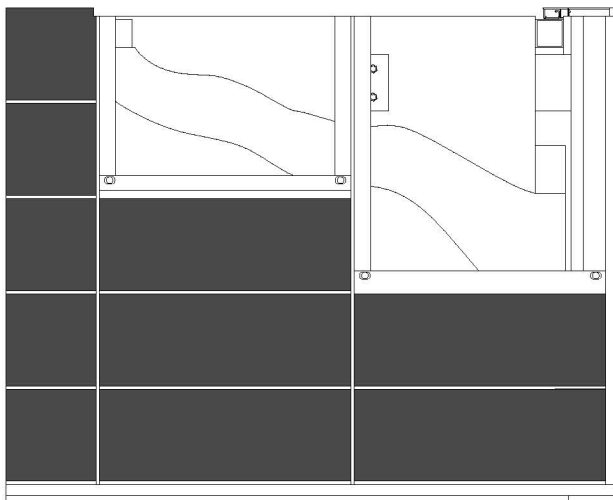
APPLICATIONS / UYGULAMALAR

**STANDARD APPLICATION / STANDART UYGULAMA**

Maximum Lamel dimension is 1 meter
 Lamel boyu maksimum 1 metre
 Thermal effects should be evaluated for different lamel dimensions.
 Farklı lamel boyları için termal etkiler değerlendirilmelidir.

UNIQUE APPLICATION / ÖZGÜN UYGULAMA

Maximum Lamel dimension is 1,5 meter
 Lamel boyu maksimum 1,5 metre
 Thermal effects should be evaluated for different lamel dimensions.
 Farklı lamel boyları için termal etkiler değerlendirilmelidir.

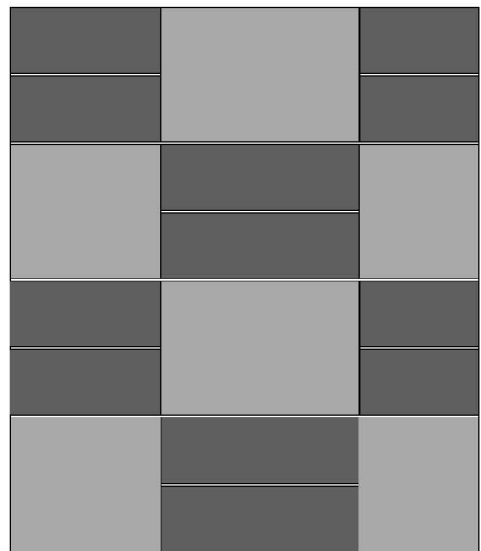
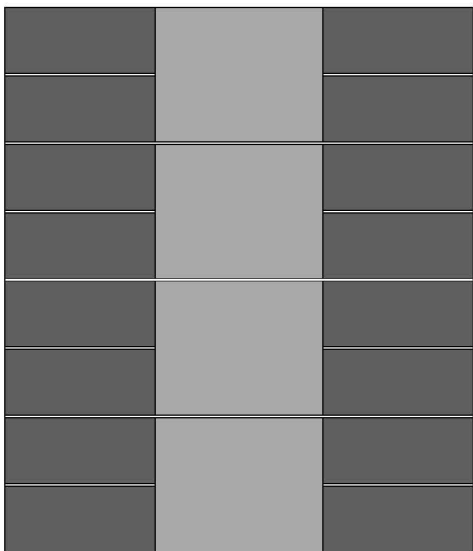
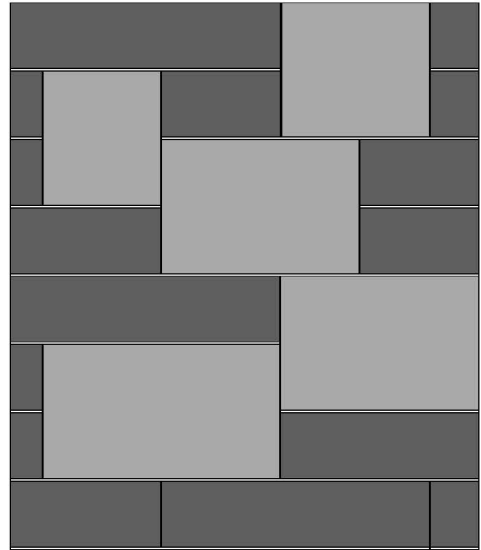
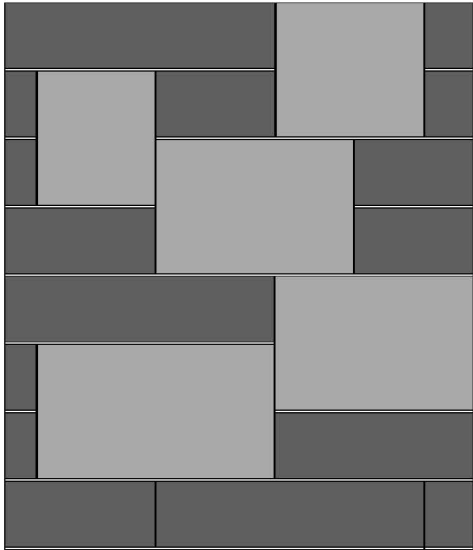
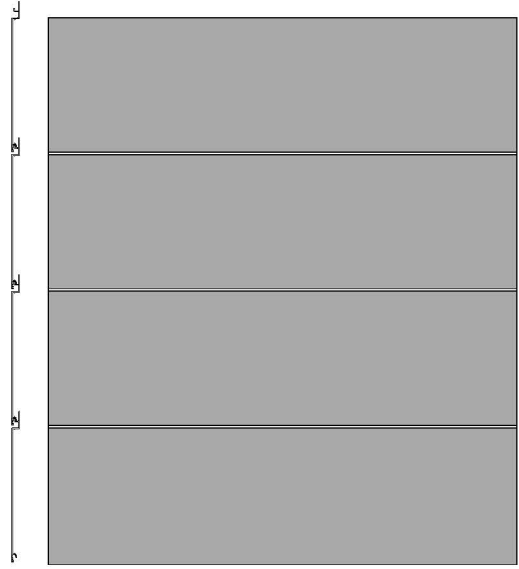
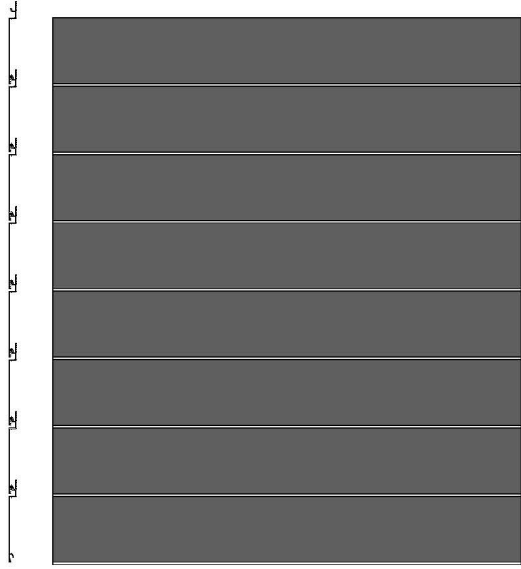
**STANDARD APPLICATION / STANDART UYGULAMA****UNIQUE APPLICATION / ÖZGÜN UYGULAMA**



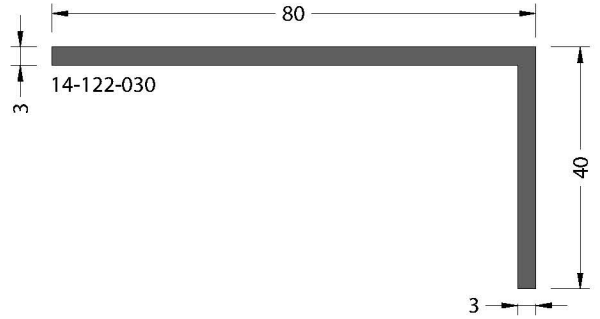
130 Lamella / Lamel



265 Lamella / Lamel

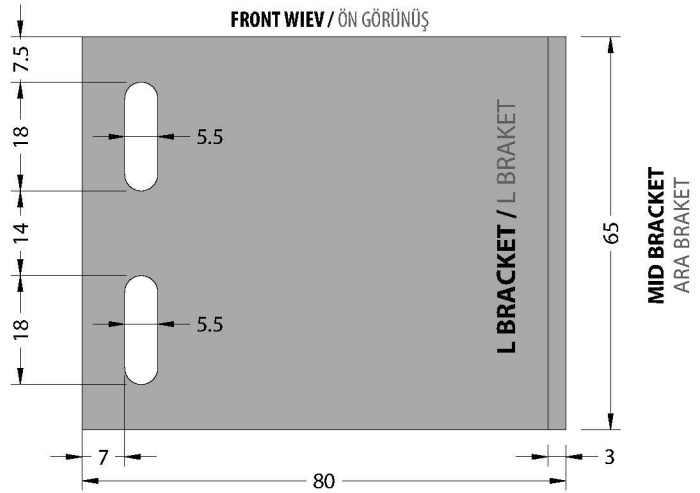
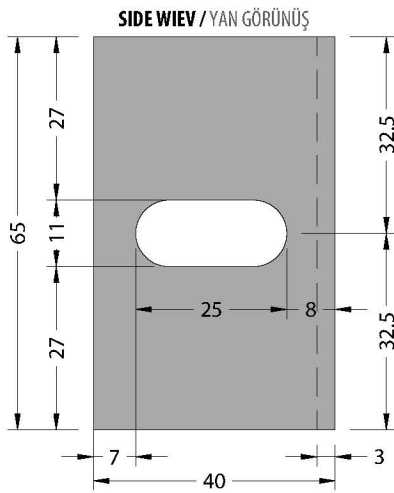


L BRACKET / L BRAKET



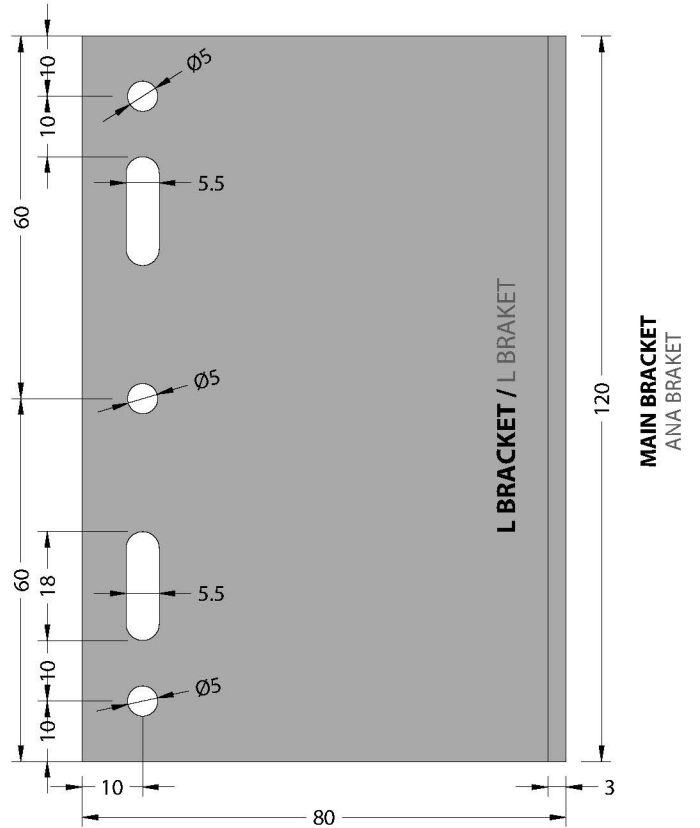
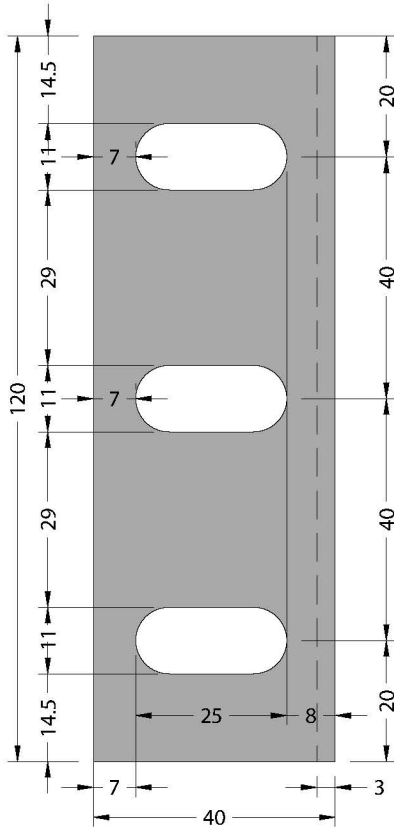
PROFILE CODE / PROFİL KODU 14-122-030

ACCESSORY CODE / AKSESUAR KODU CA14-122-65.0



PROFILE CODE / PROFİL KODU 14-122-030

ACCESSORY CODE / AKSESUAR KODU CA14-122-120

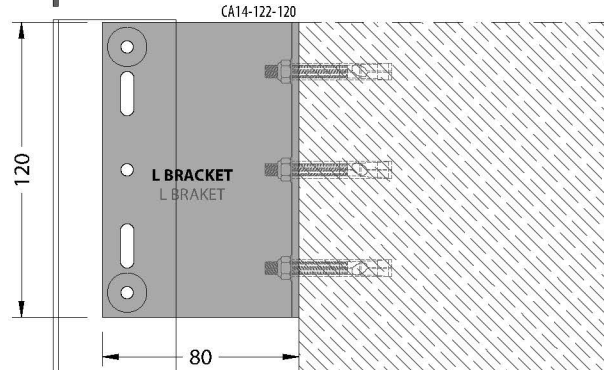


No scaled / Ölçeksiz

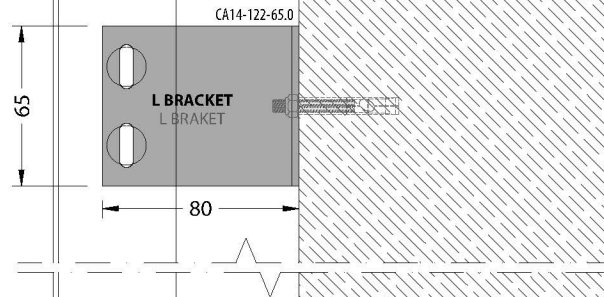
16-104-020

BRACKET ASSEMBLY / BRAKET UYGULAMASI

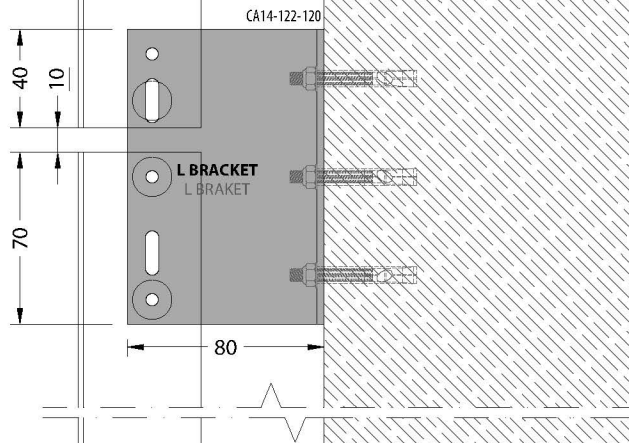
MAIN BRACKET
ANA BRAKET
UP / ÜST



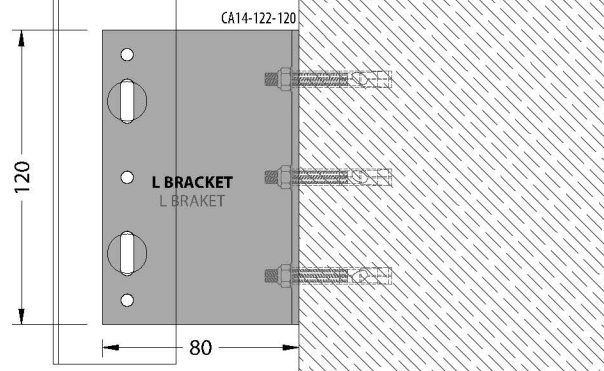
MID BRACKET
ARA BRAKET



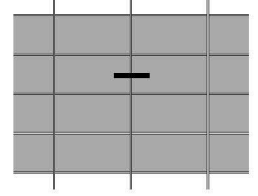
MAIN BRACKET
ANA BRAKET



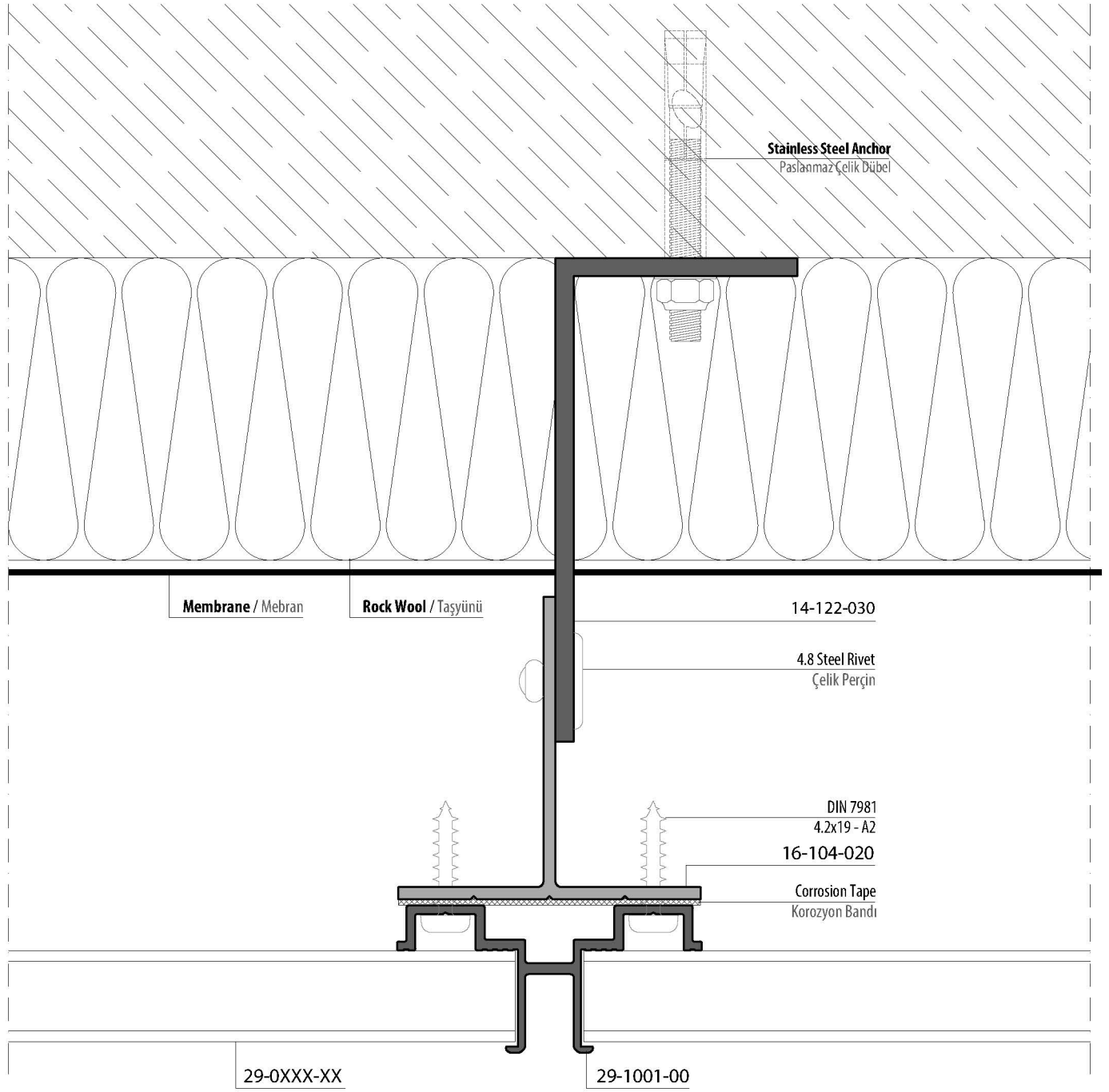
MAIN BRACKET
ANA BRAKET
BOTTOM / ALT

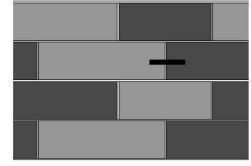


No scaled / Ölçeksiz

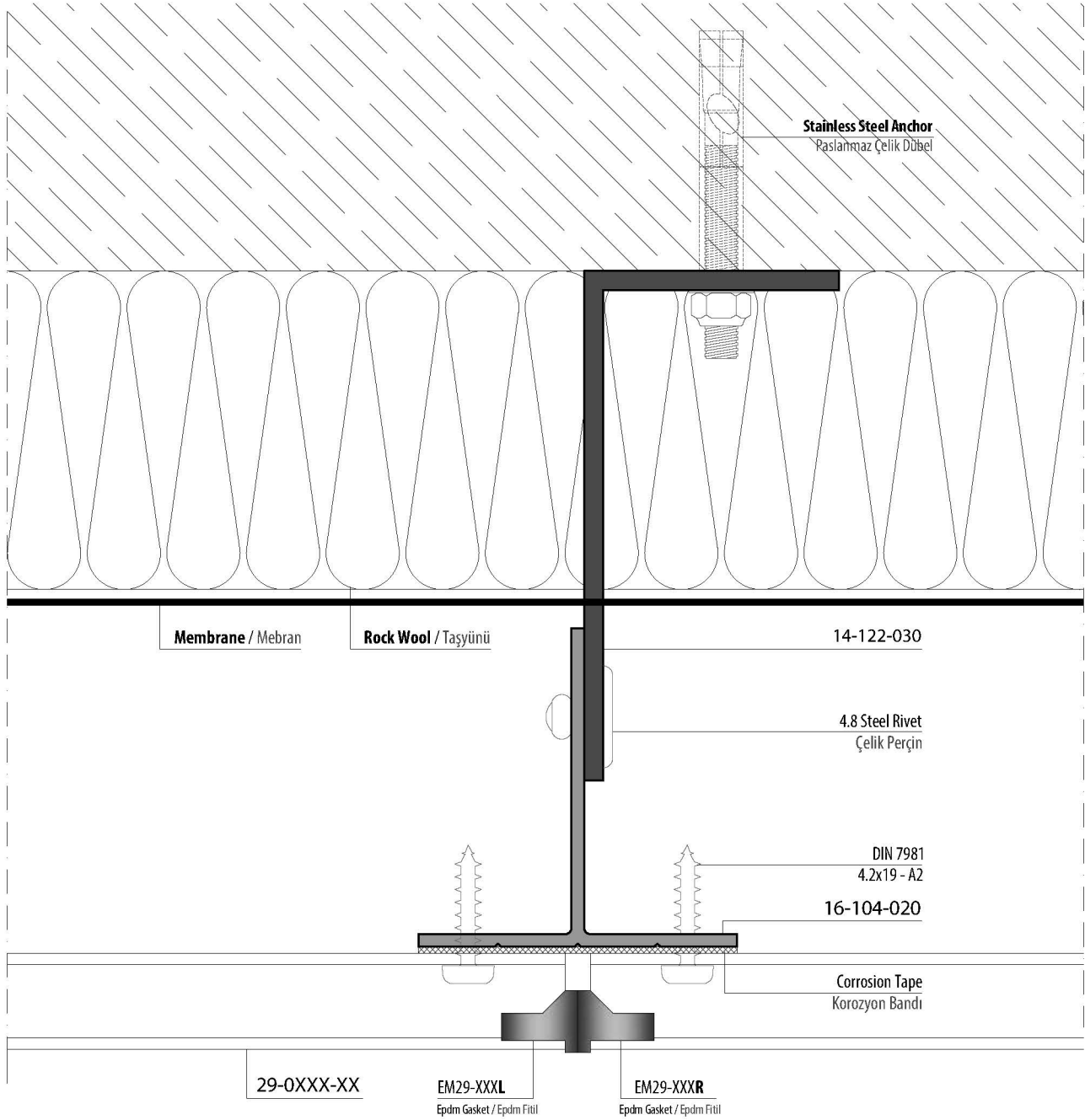


STANDARD APPLICATION / STANDART UYGULAMA

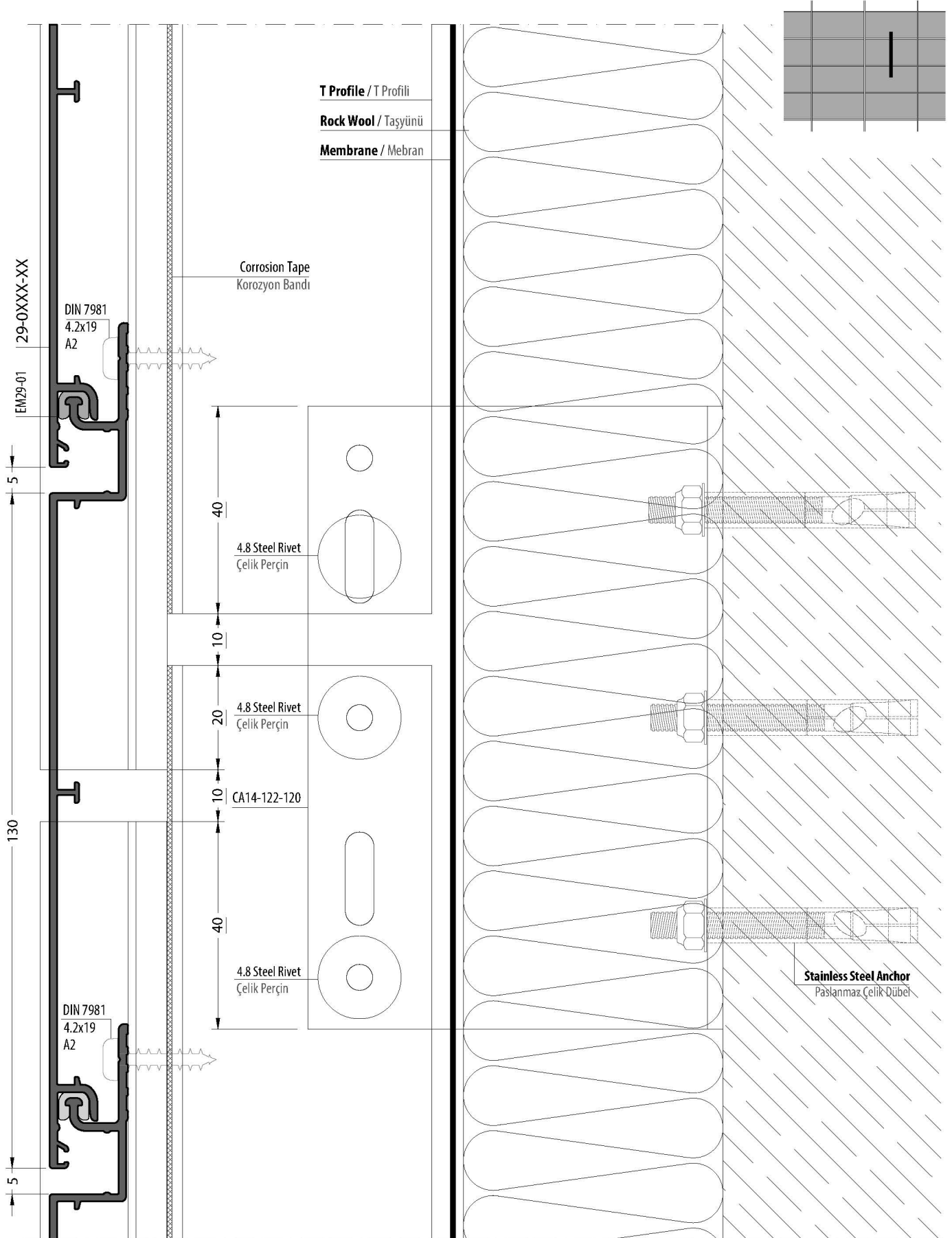


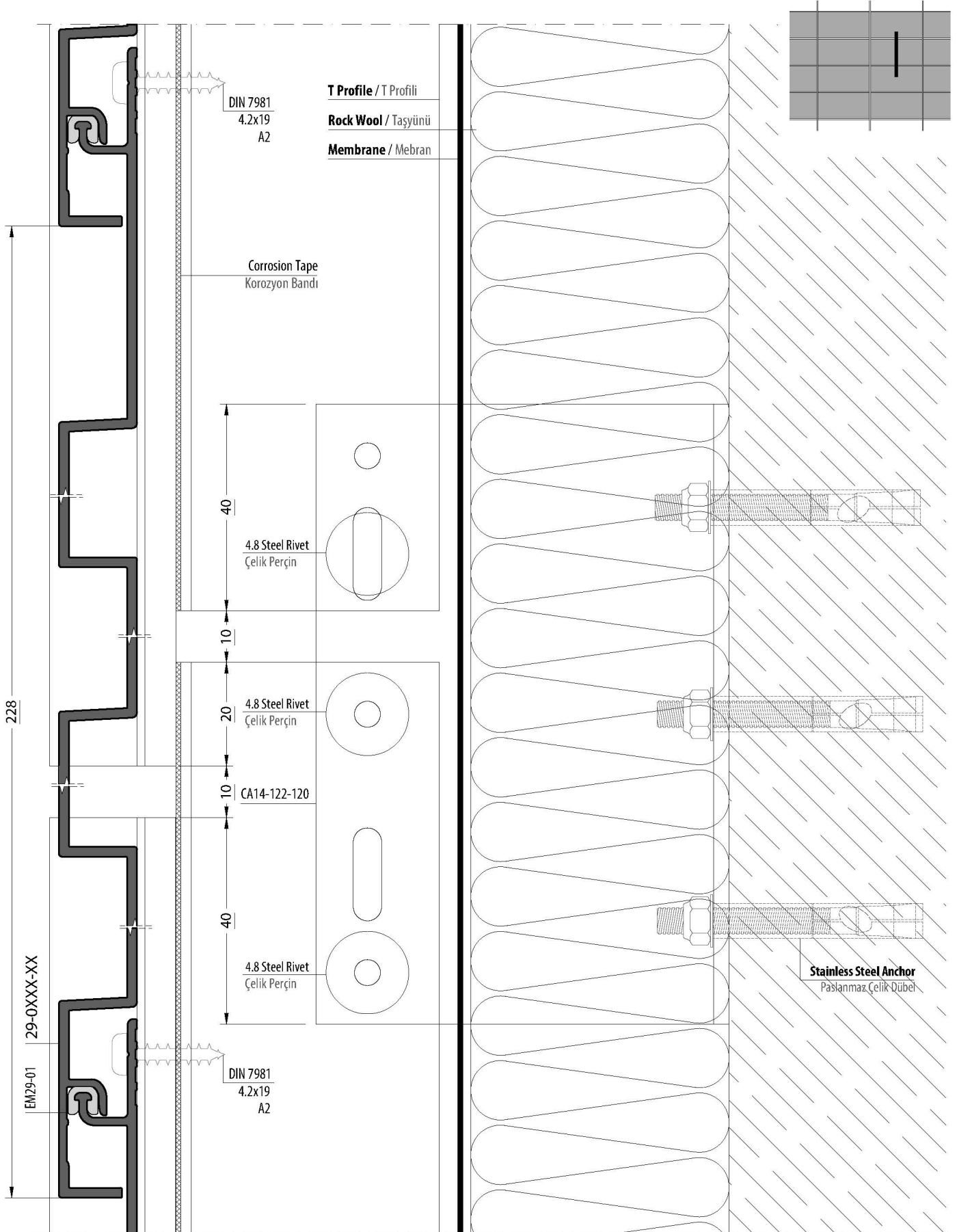


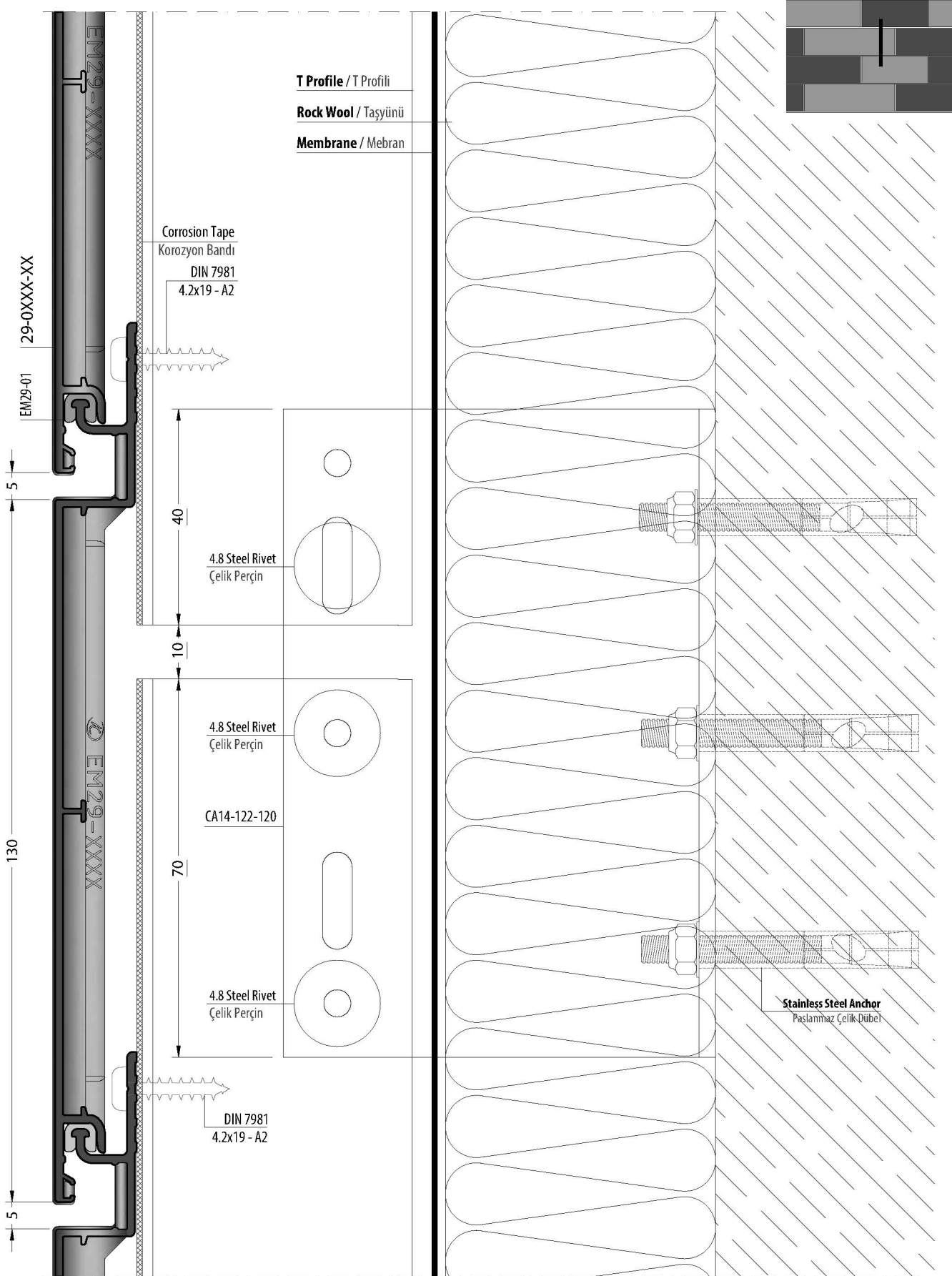
UNIQUE APPLICATION / ÖZGÜN UYGULAMA



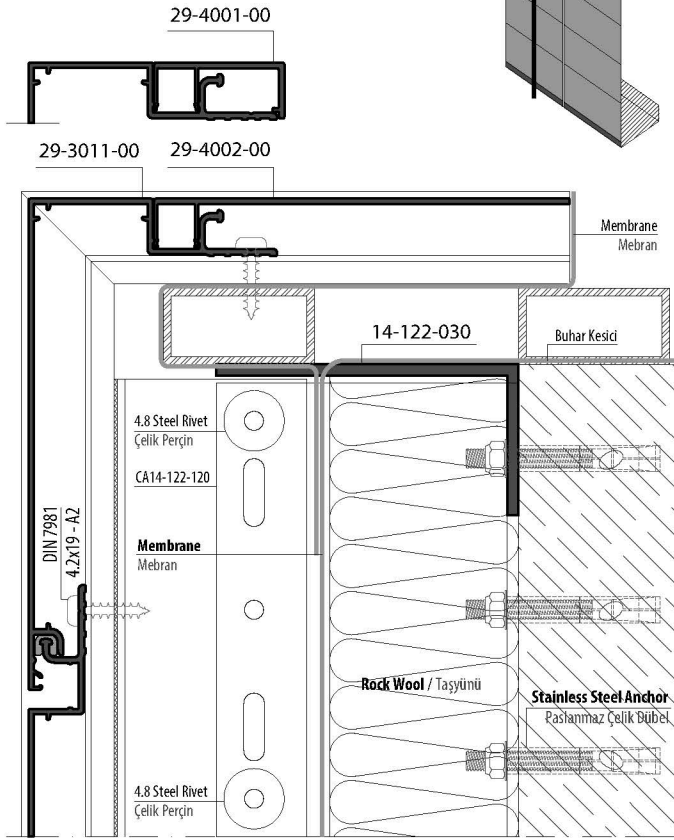
Scale / Ölçek : 1/1



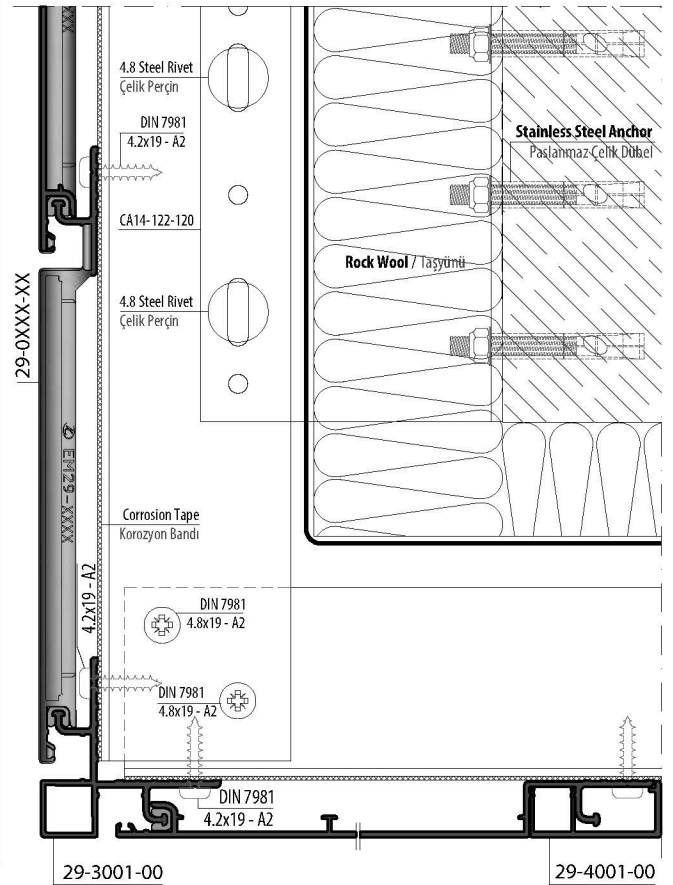
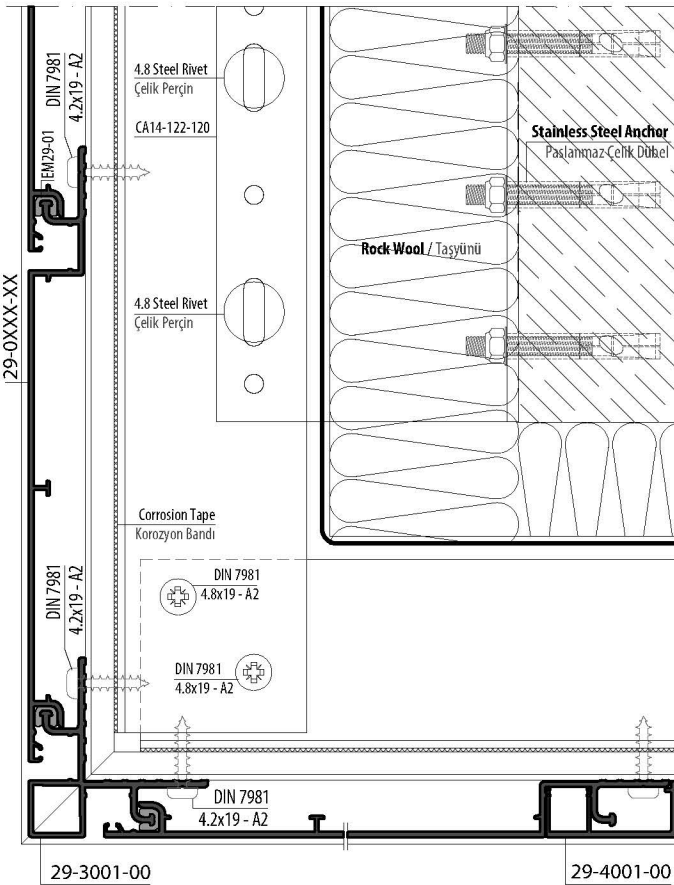
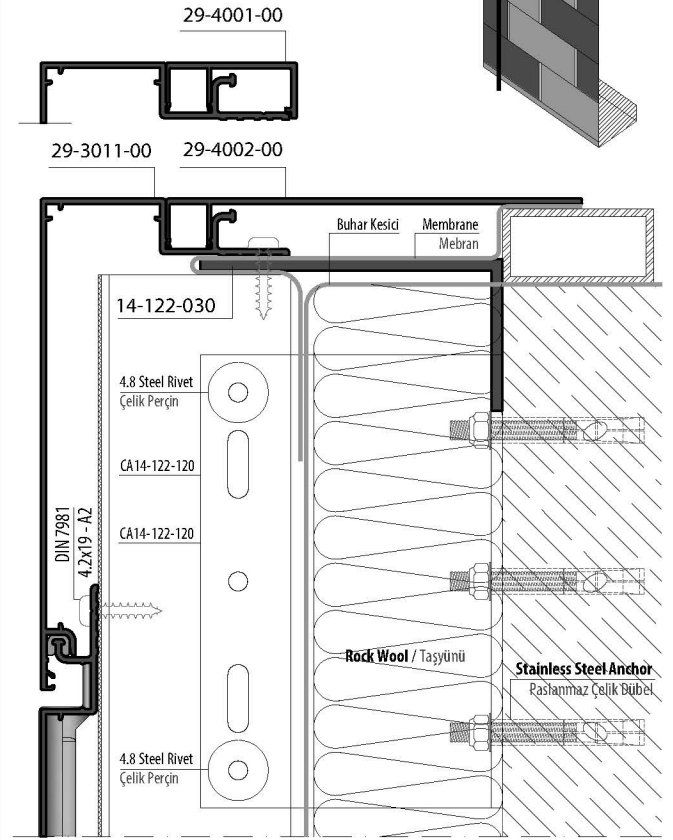




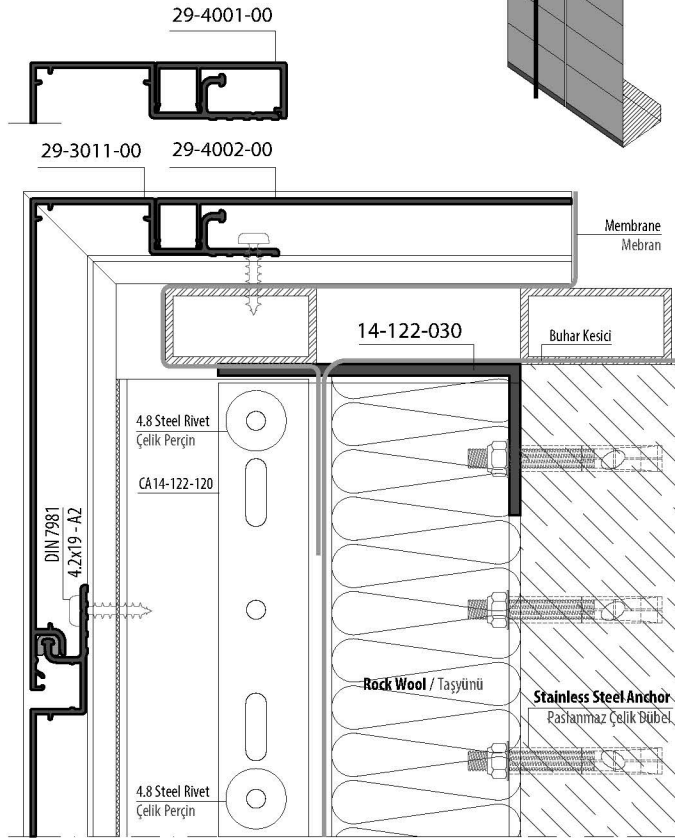
STANDARD APPLICATION
STANDART UYGULAMA



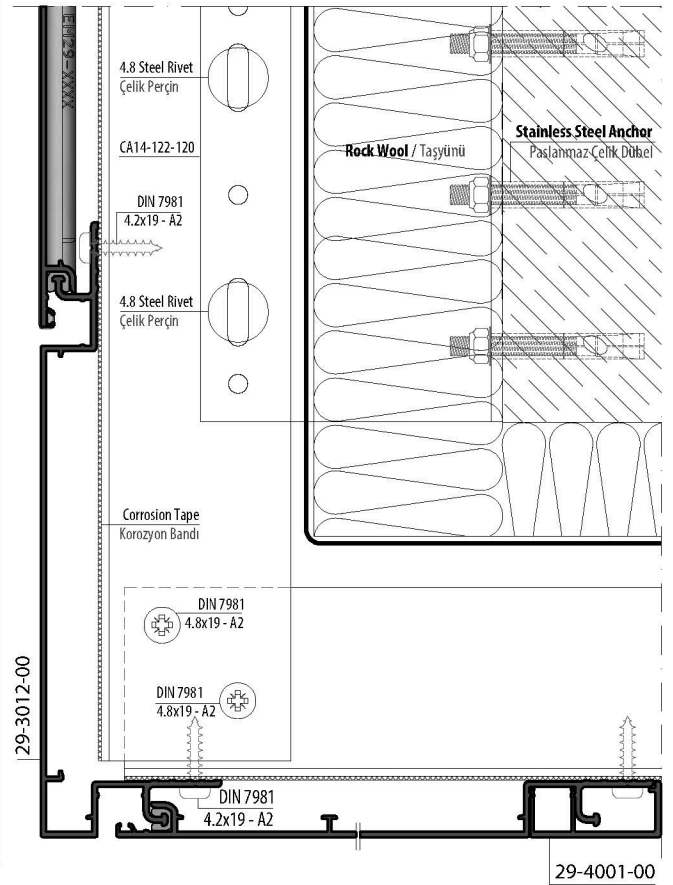
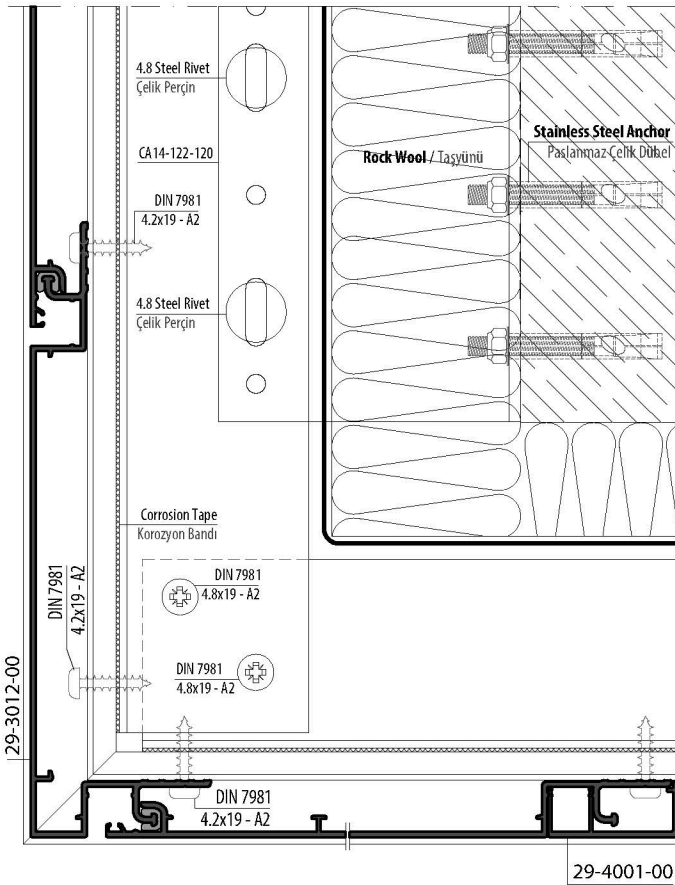
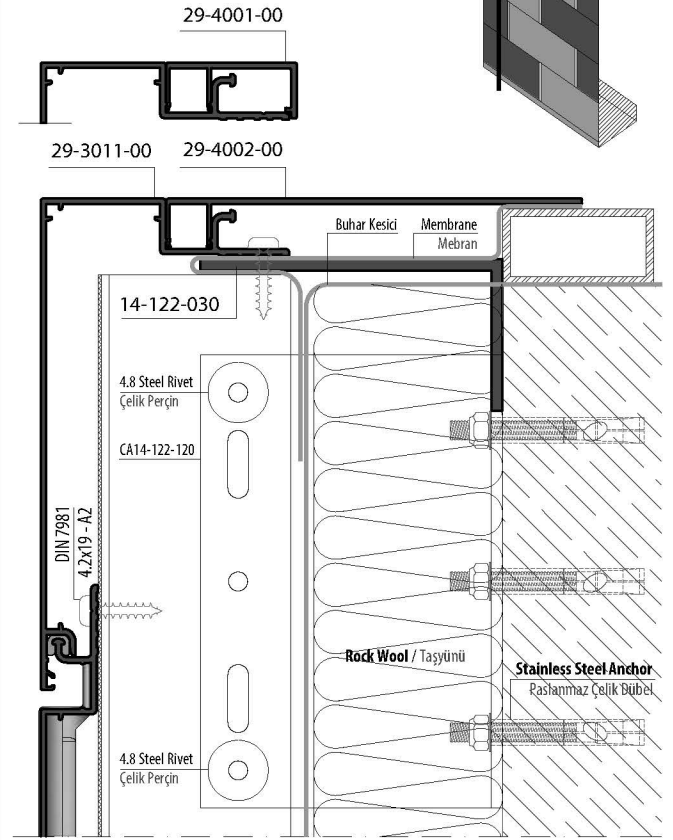
UNIQUE APPLICATION
ÖZGÜN UYGULAMA



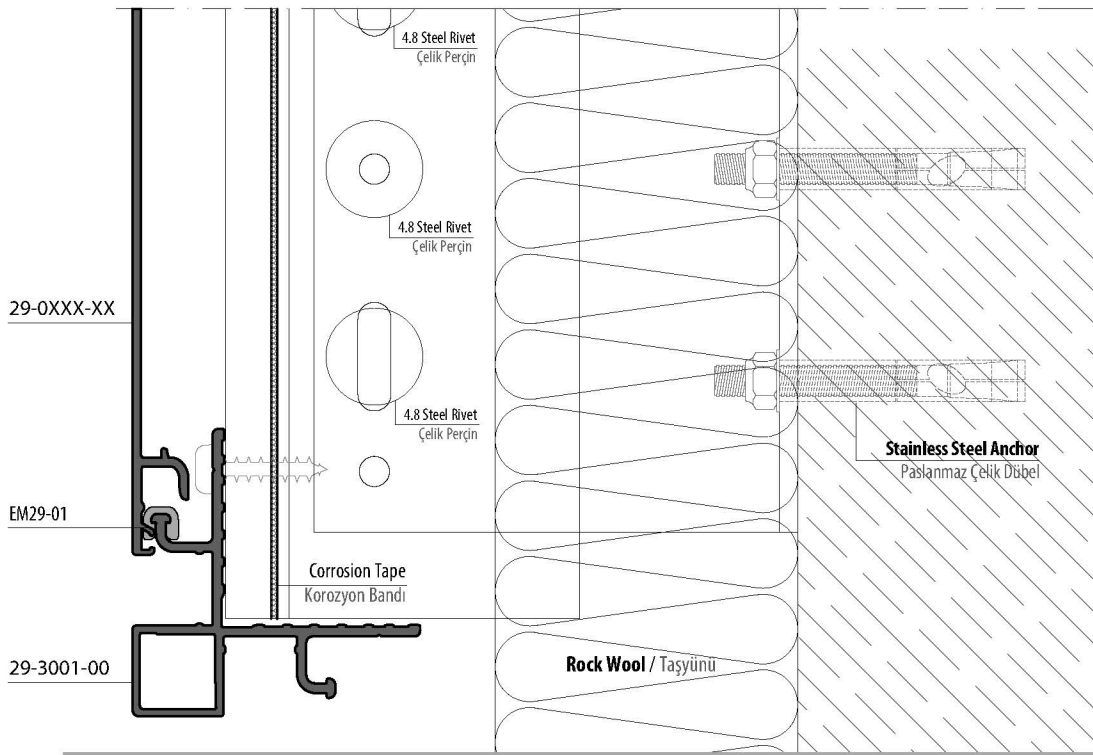
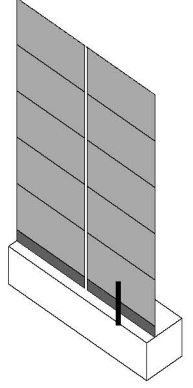
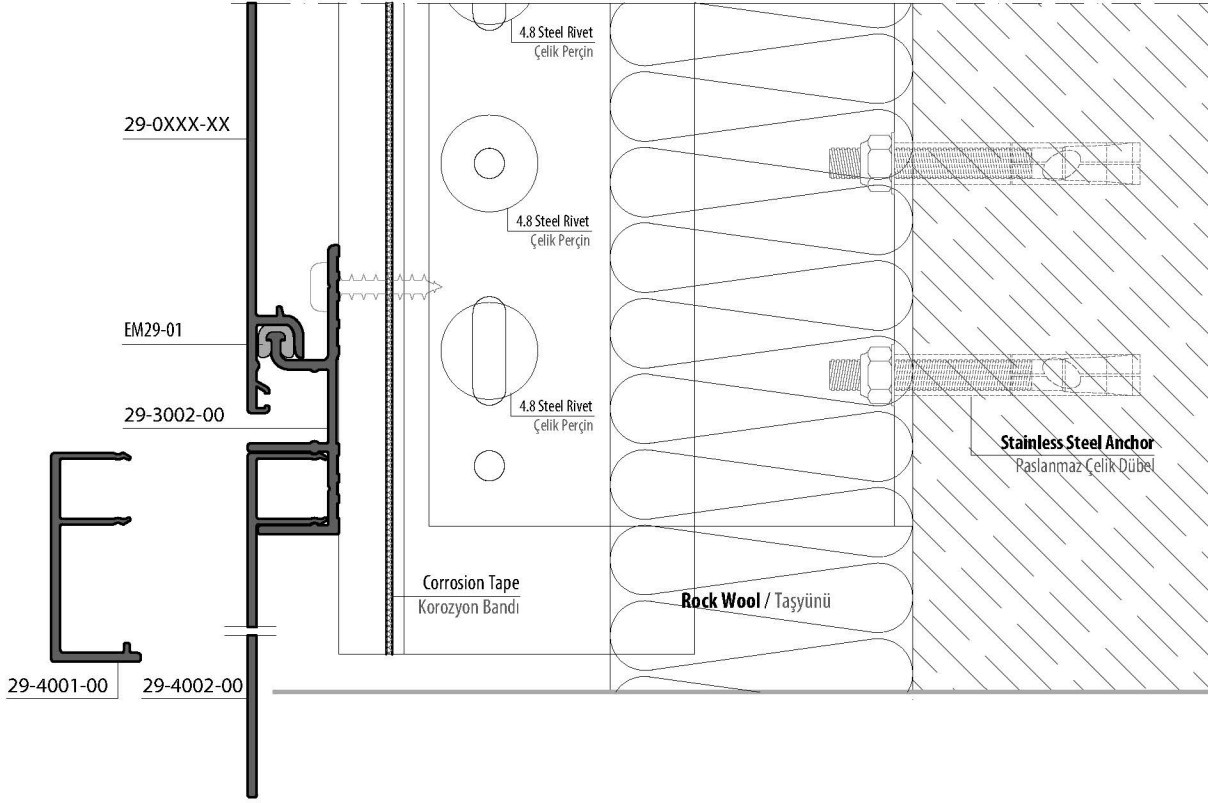
STANDARD APPLICATION
STANDART UYGULAMA



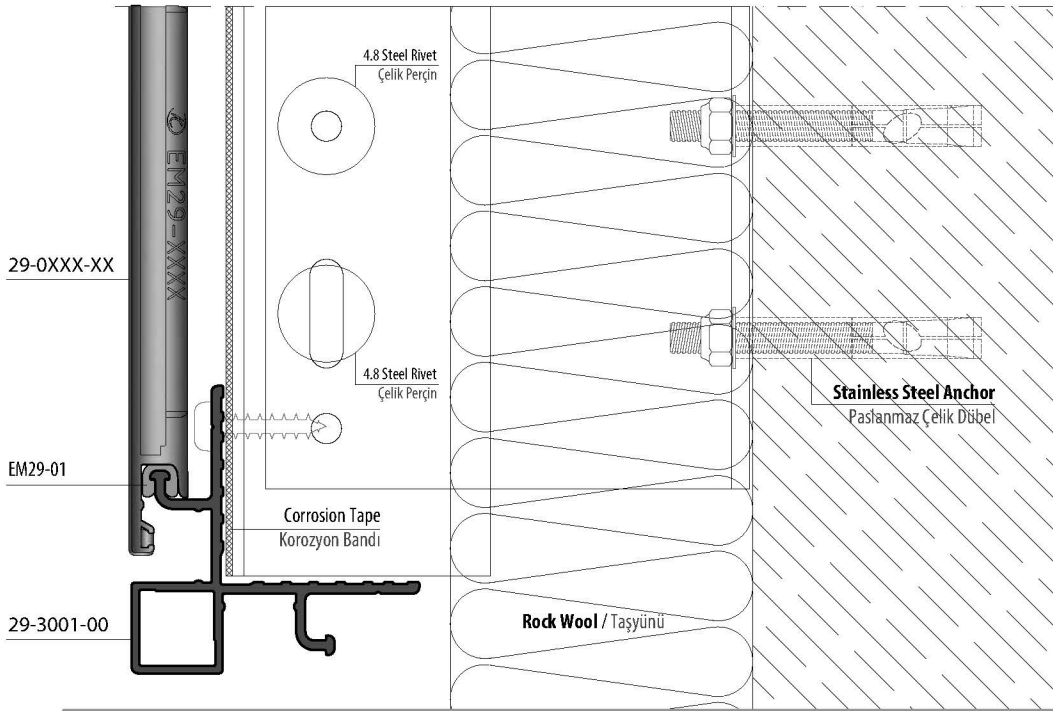
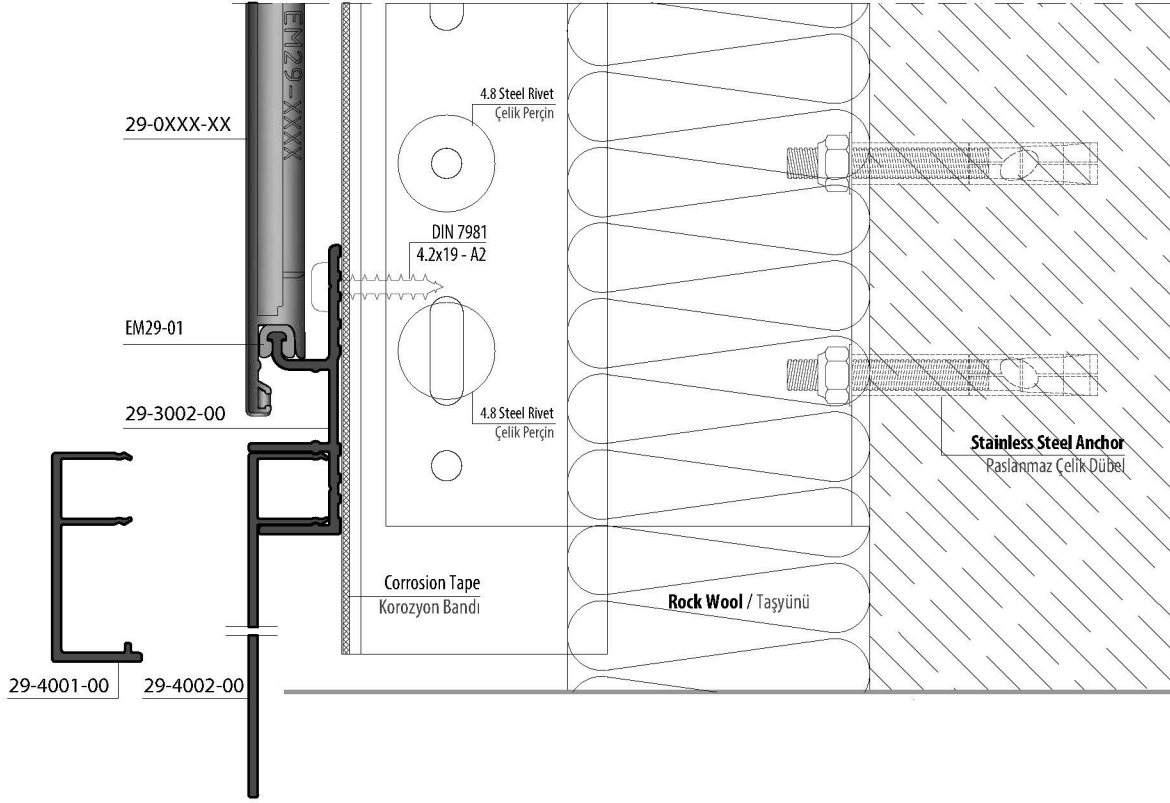
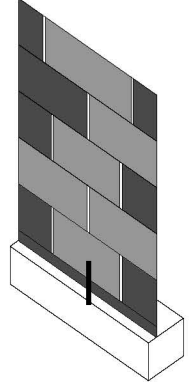
UNIQUE APPLICATION
ÖZGÜN UYGULAMA



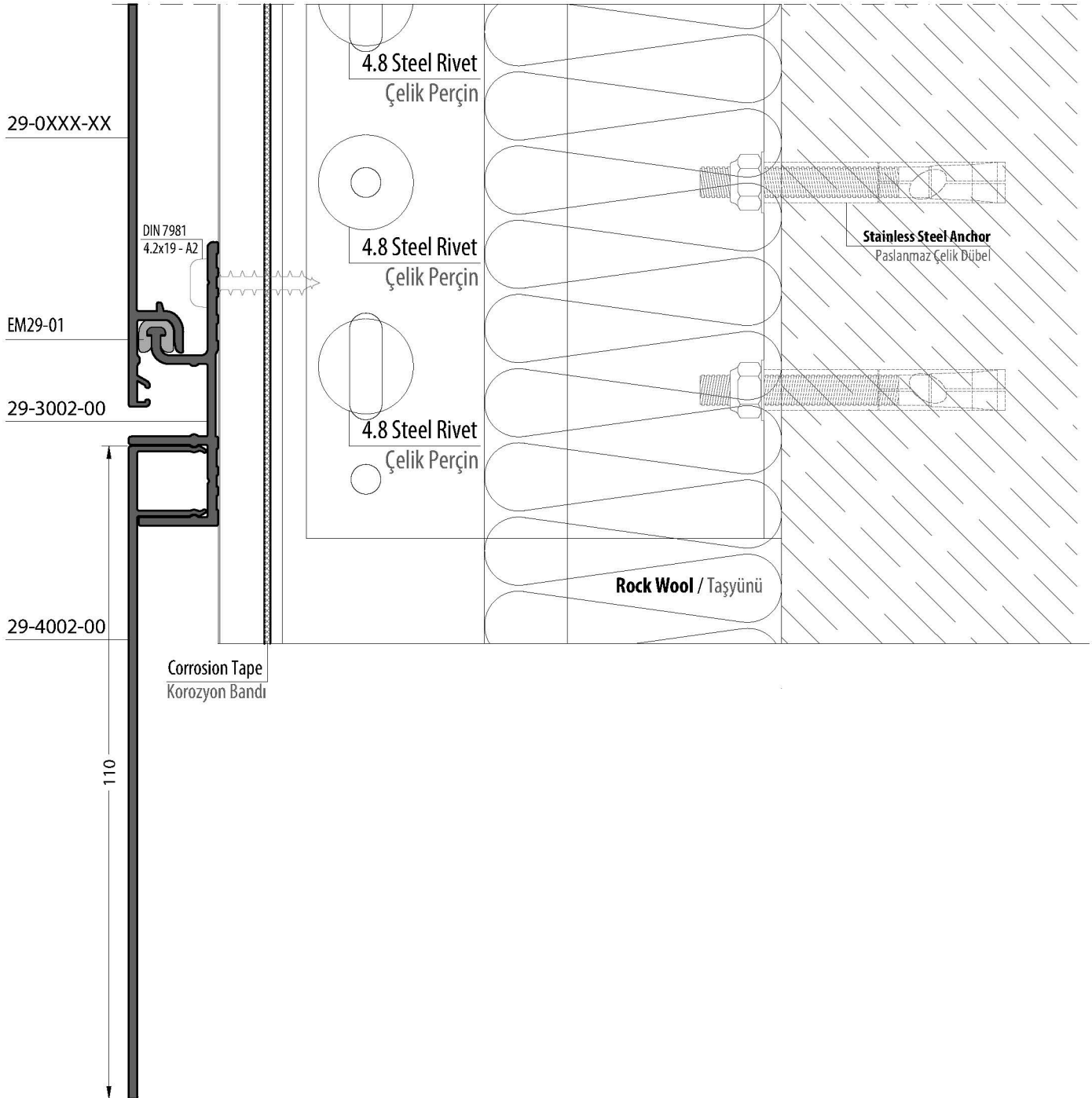
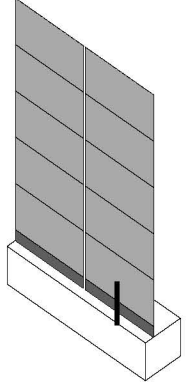
STANDARD APPLICATION / STANDART UYGULAMA

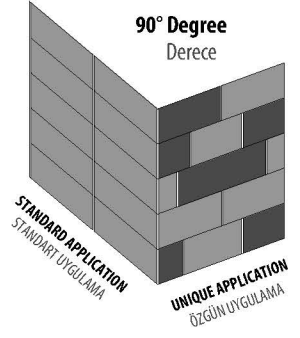


UNIQUE APPLICATION / ÖZGÜN UYGULAMA

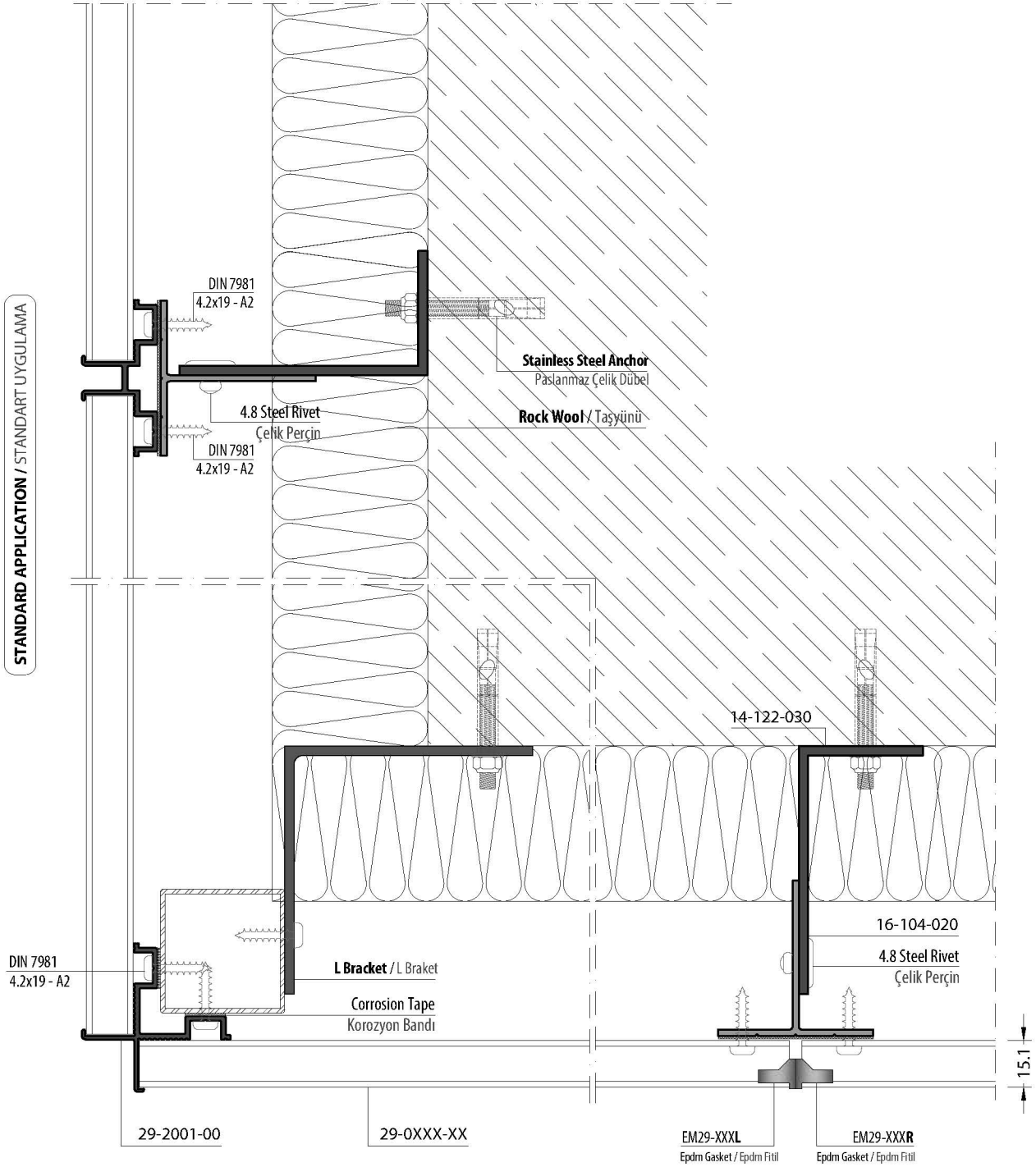


STANDARD APPLICATION / STANDART UYGULAMA

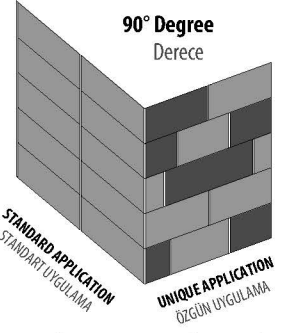




EXTERIOR ANGLE / DIŞ AÇI

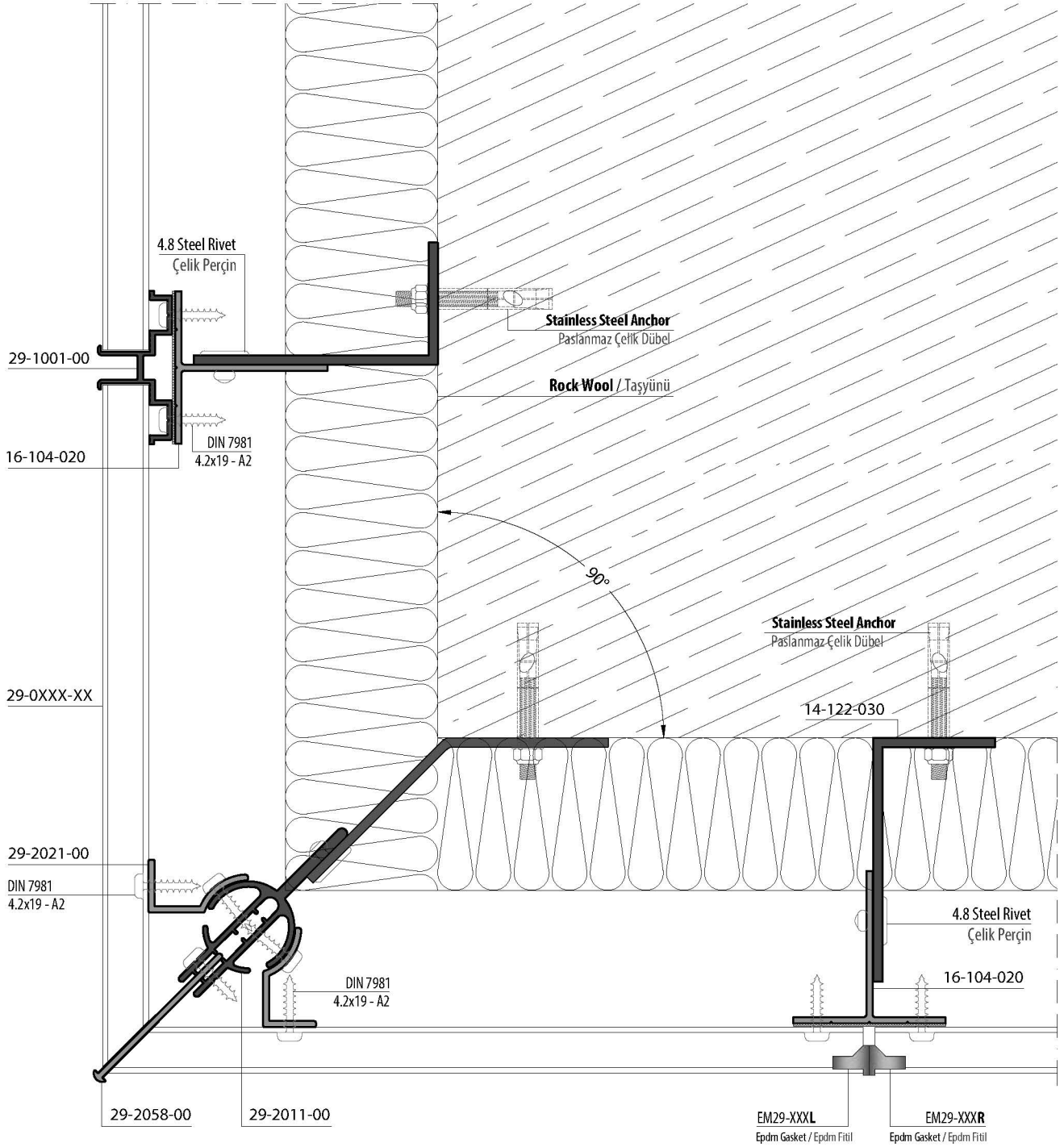


UNIQUE APPLICATION / ÖZGÜN UYGULAMA

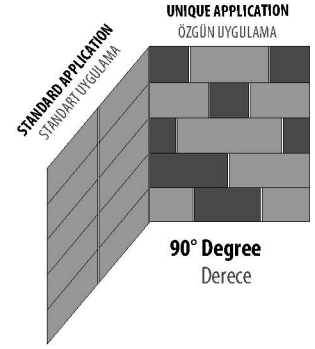


EXTERIOR ANGLE / DIŞ AÇI

STANDARD APPLICATION / STANDART UYGULAMA



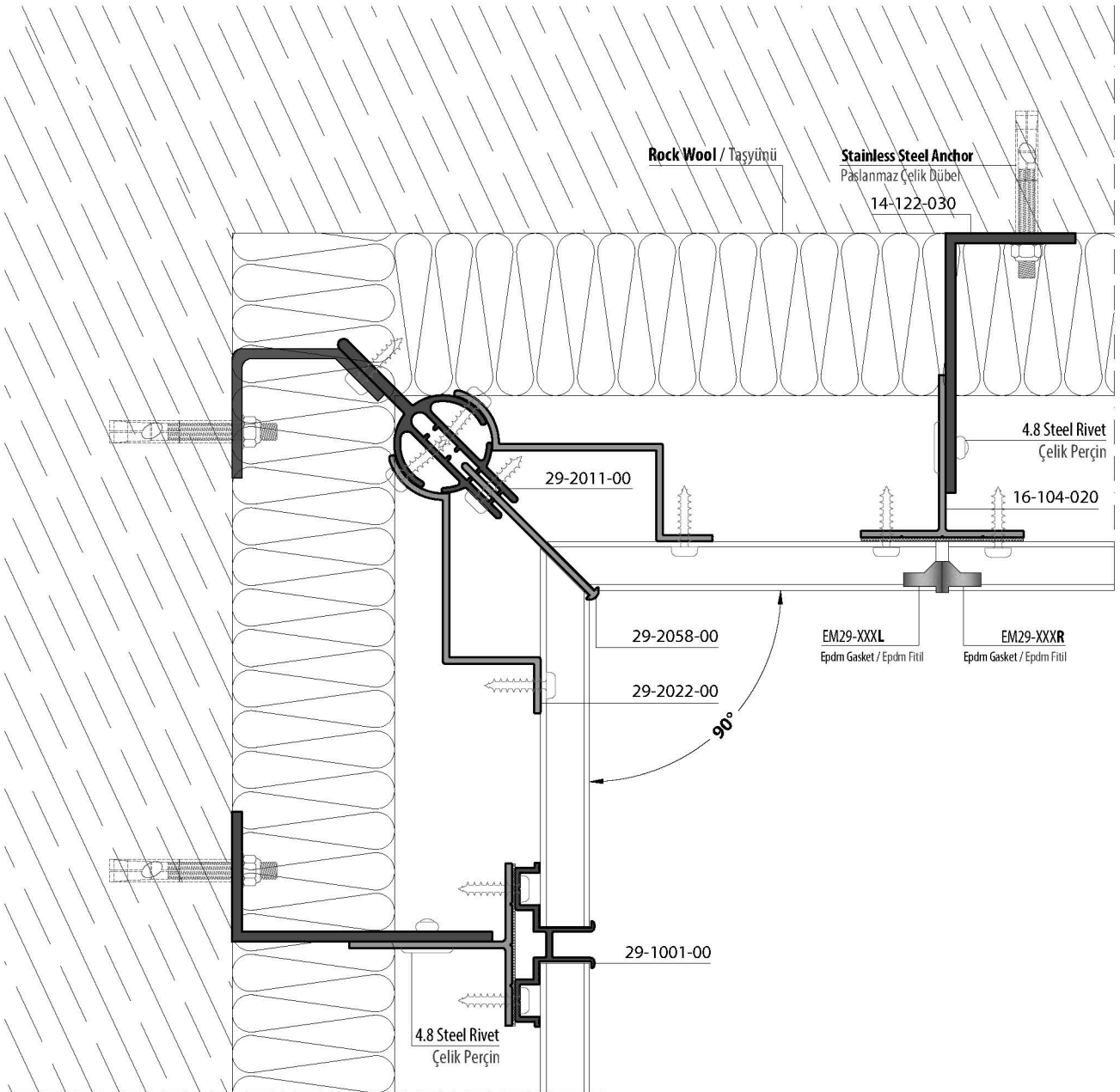
UNIQUE APPLICATION / ÖZGÜN UYGULAMA



INTERIOR ANGLE / İÇ AÇI

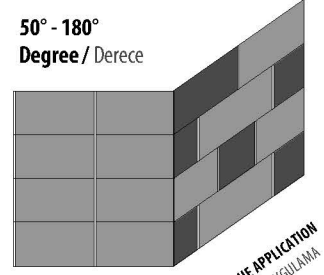
UNIQUE APPLICATION / ÖZGÜN UYGULAMA

STANDARD APPLICATION / STANDART UYGULAMA



EXTERIOR ANGLE / DIŞ AÇI

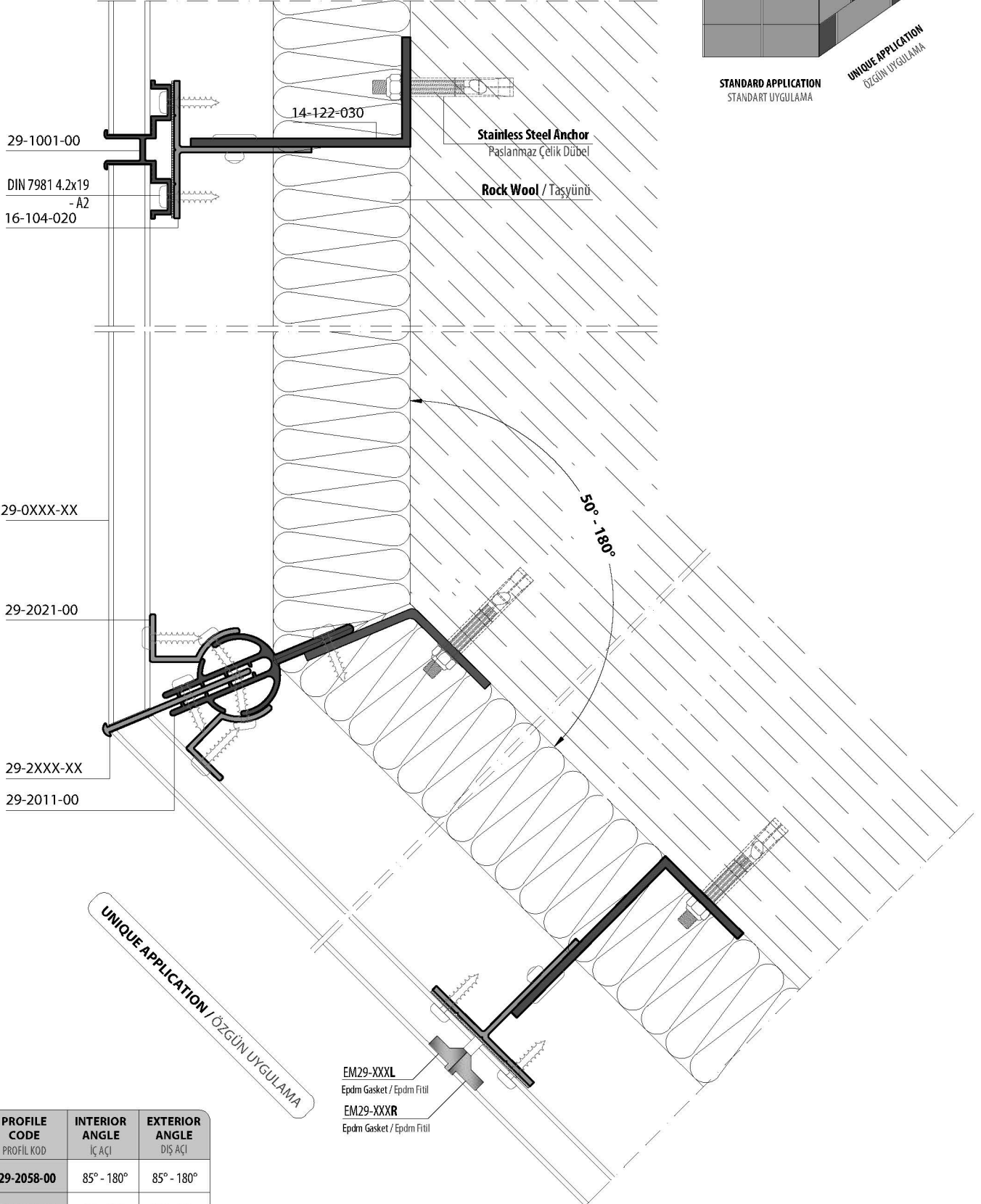
50° - 180°
Degree / Derece



STANDARD APPLICATION
STANDART UYGULAMA

UNIQUE APPLICATION
ÖZGÜN UYGULAMA

STANDARD APPLICATION / STANDART UYGULAMA

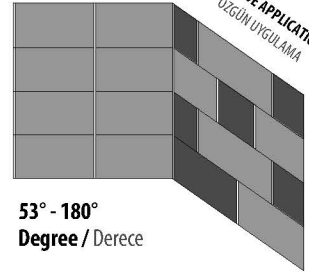


PROFILE CODE PROFİL KOD	INTERIOR ANGLE İÇ AÇI	EXTERIOR ANGLE DIŞ AÇI
29-2058-00	85° - 180°	85° - 180°
29-2083-00	60° - 85°	60° - 85°
29-2107-00	50° - 60°	53° - 60°

Scale / Ölçek : 1/2

STANDARD APPLICATION
STANDART UYGULAMA

UNIQUE APPLICATION
ÖZGÜN UYGULAMA



53° - 180°
Degree / Derece

INTERIOR ANGLE / İÇ AÇI

14-122-030

16-104-020

DIN 7981
4.2x19 - A2

29-1001-00

29-0XXX-XX

Stainless Steel Anchor
Paslanmaz Çelik Dübel

Rock Wool / Taşyünü

29-2022-00

29-2XXX-XX

53° - 180°

29-2011-00

EM29-XXXL
Epdm Gasket / Epdm Fıtıl

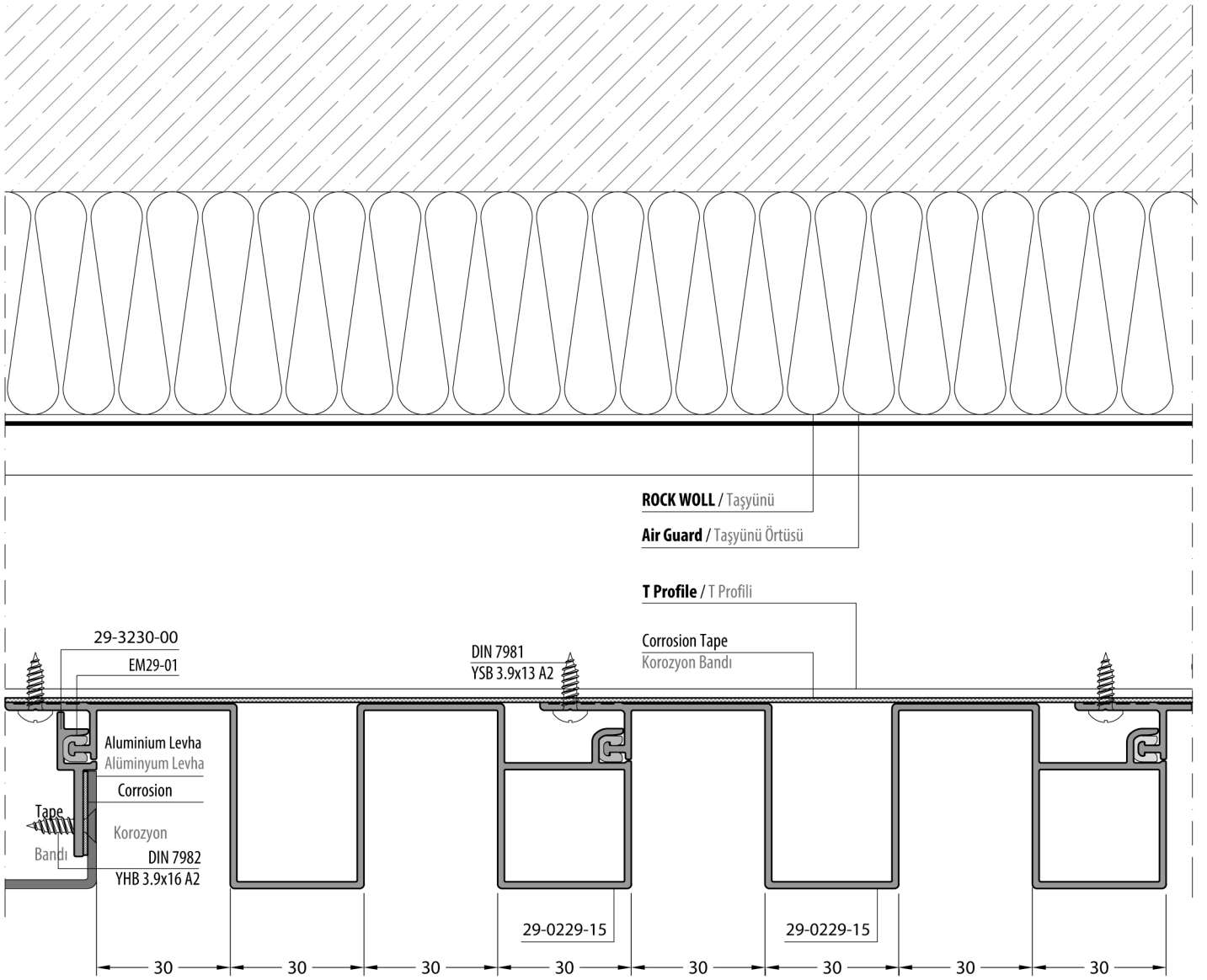
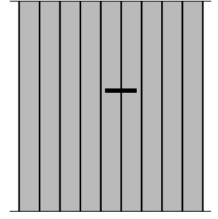
EM29-XXXR
Epdm Gasket / Epdm Fıtıl

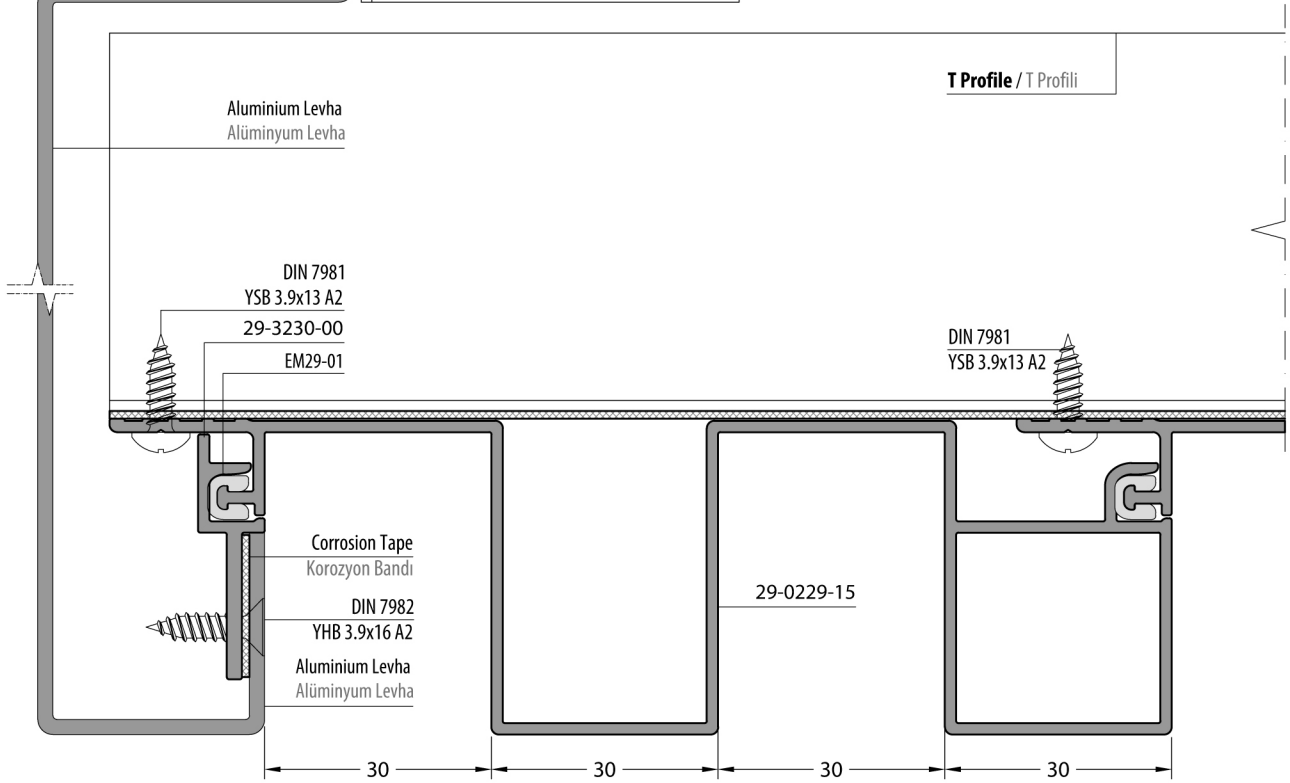
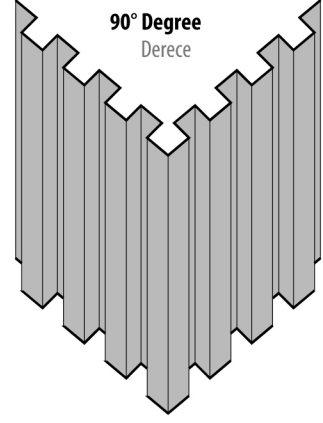
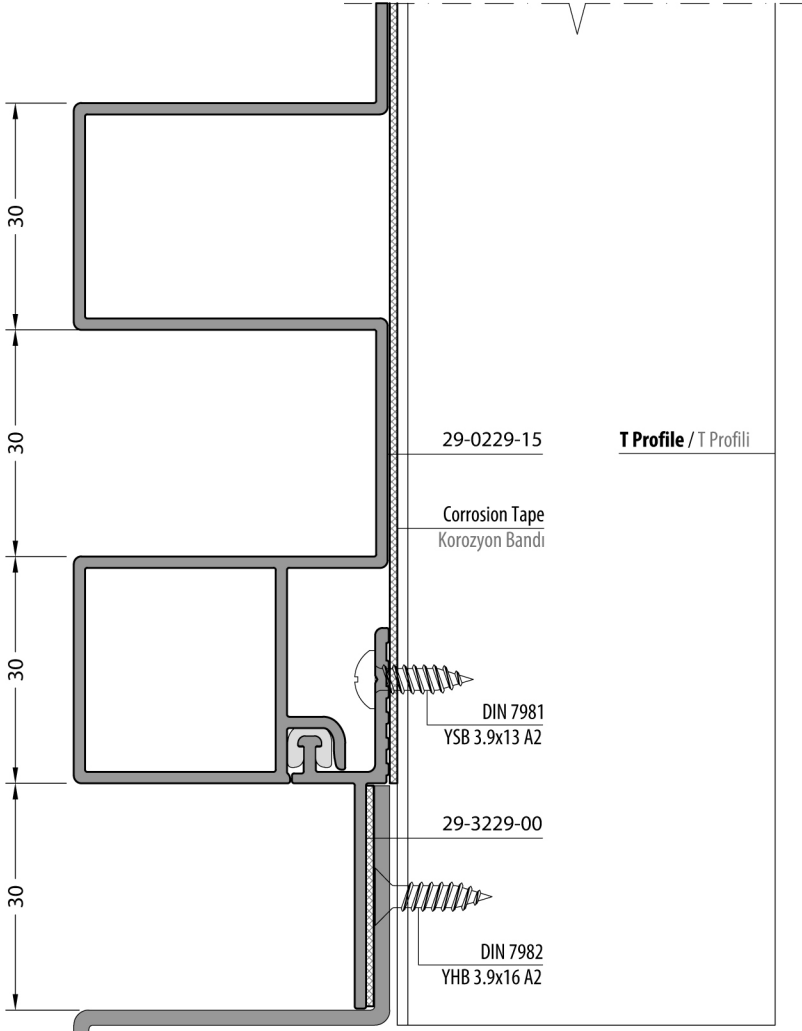
STANDARD APPLICATION / STANDART UYGULAMA

UNIQUE APPLICATION / ÖZGÜN UYGULAMA

PROFILE CODE PROFİL KOD	INTERIOR ANGLE İÇ AÇI	EXTERIOR ANGLE DIŞ AÇI
29-2058-00	85° - 180°	85° - 180°
29-2083-00	60° - 85°	60° - 85°
29-2107-00	50° - 60°	53° - 60°

Scale / Ölçek : 1/2







KURTOĞLU BAKIR KURŞUN SANAYİ A.Ş.
Velimeşe Organize Sanayi Bölgesi Akbayır Yolu
Küme Evler No: 81 Ergene 59851 Tekirdağ / Türkiye
T: 0 282 684 70 00 F: 0 282 684 70 01
www.kurtogluas.com

